

# Technical Bulletin

Model(s)	Year	Eng. Code	Trans. Code	VIN Range From	VIN Range To
All (Except Routan)	2009-2016	All	All	All	All

## Condition

**60 15 01** May 26, 2015 **2019568** Supersedes T.B. V601401 dated March 26, 2014 to include additional model/model year applicability and updated information.

**Sunroof or Power Sunshade, Does Not Open/Close or Automatic Operation Does Not Function**

 **Note:**

**DO NOT** diagnose or replace any component(s) for this concern before performing the repair procedure as explained in this bulletin.

The panoramic sunroof, regular sunroof or power sunshade cannot be opened/closed, only operates with manual control, and/or the automatic operation does not function.

One or more of the following fault codes may be present in the **4F Central Electronics 2/Panorama Sunroof** or **09 Central Electronics** control module fault memory (location and fault codes vary depending on vehicle model/model year, not all vehicles will set faults).

PQ35 Chassis Vehicles	
DTC	Description
01512 005	Power Sunroof Control Module, No or incorrect basic setting / adaptation
02907 005	Roof Shade Control Module, No or incorrect basic setting / adaptation
MQB Chassis Vehicles	
DTC	Description
B13C654	Power Sunroof Control Module, No basic setting
B13C754	Roof Shade Control Module, No basic setting

# Technical Bulletin

---

## Technical Background

The sunroof or power sunshade's initialization procedure (Basic Settings) may have been unintentionally activated by the customer.

### Explanation

When the sunroof or power sunshade is closed and the switch is held in the closed position for longer than 10 seconds (figure 1, -arrow E- or figure 2, -2-), the basic setting program of the sunroof/sunshade motor is initiated and previous travel limits are lost.

If the basic settings are not fully restored (by performing the sunroof/power sunshade initialization procedure), fault codes may set and the sunroof/power sunshade may no longer operate normally.



### Tip:

Fault codes may not always be present, but the results of not completing basic settings are the same.

Emergency operation will still function without the basic settings stored.

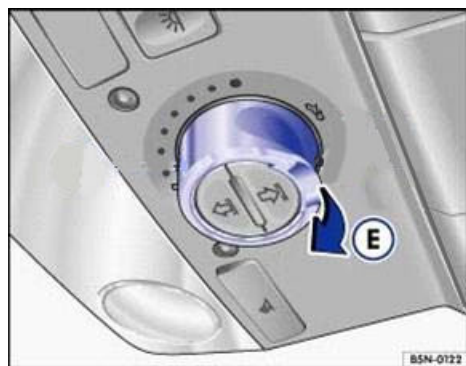


Figure 1 (Sunroof control design may differ depending on model/model year)



Figure 2 (Power sunshade control design may differ depending on model/model year)

# Technical Bulletin

---

## Production Solution

Not applicable.

## Service

### Perform the initialization procedure for the Sunroof or Sunshade

The customer can be instructed to perform the sunroof/power sunshade initialization procedure manually.

#### **Note:**

See Elsa Repair Manual Group 60 by vehicle model code for the correct procedure.

Initialization procedure will vary depending on vehicle model/model year.

The most common procedure is outlined below.

- Ignition switch must be on.
  - The doors and rear lid must be closed.
  - The sunroof rotary switch (if equipped) must be in the closed position.
1. Push/Pull the sunroof/sunshade switch toward the tilt closed/sunshade closed position and hold the switch in this position for the entire initialization process.
  2. **If open, the sunroof/sunshade will now close without pinch protection!**
  3. During the adaptation process, the sunroof/sunshade will open and close on its own.
  4. After the sunroof/sunshade closes again, the initialization process is complete and the switch can be released.

#### **Tip:**

During the adaptation process the sunroof/sunshade will first close and then re-open. After the sunroof closes again, the adaptation process is complete. Do not release the switch until the sunroof/sunshade stops moving.

If the sunroof/power sunshade still does not function after the initialization process has been completed, or the initialization process does not start, further diagnosis is required.



#### **WARNING:**

**Pinch protection is turned off while performing the initialization process!**

**Pinch protection cannot prevent fingers or other body parts from being pressed against the edge of the roof; injuries may result.**

**Always make sure that no one is in the way of the sunroof/power sunshade when it is closing.**

# Technical Bulletin

---

## Warranty

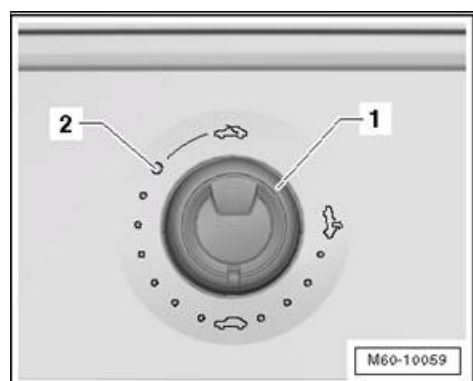
Information only.

## Required Parts and Tools

No Special Parts required.

No Special Tools required.

## Additional Information



**Figure 3 (Sunroof control design may differ depending on model/model year)**

The sunroof only works when the ignition is switched ON.

The dial (Figure 3,-1-) opens the glass panel.

After the ignition is switched OFF, these functions are available until either the drivers or passenger door is opened.

Opening the glass sunroof in the “comfort” position (Figure 3, -2-) prevents most driving noise, which may occur when the glass is opened completely. The glass sunroof may be tilted and closed by pulling or pushing the rotary switch.

The sunroof is equipped with a closing force limiter in the area of the window. When an obstruction is met during closing sequence, the roof opens again by itself.

There is also an emergency close function. If there are problems with closing the sunroof, it can be forced close by pulling on the back end of the dial. The rotary switch must be in the “sunroof close” position.

**For the emergency close function the closing force limit is deactivated.**

The motor for the sunroof has over-heat protection, which activates under different conditions. After the sunroof motor has cooled down, it can be operated again.

If there is a malfunction in the sunroof electrical system, the sunroof can be moved manually by a hex wrench.



# Technical Bulletin

---

**All part and service references provided in this Technical Bulletin are subject to change and/or removal. Always check with your Parts Dept. and Repair Manuals for the latest information.**