



Technical Bulletin

Model(s)	Year	Eng. Code	Trans. Code	VIN Range From	VIN Range To
All Except Routan	2009-2015	All	All	All	All

Condition

66 15 02 March 11, 2015 2027119 Supersedes T.B. V661301 dated July 16, 2013 to include additional model year applicability.

Damage on External Chrome or Aluminum Surfaces

Customer statement:

Complaints on external chrome/aluminum surfaces (for example trim/protective strips, batches and so on):

- bubbles
- flaking-off
- cracks

Technical Background

The surfaces of chrome parts can get damaged in the production process or by external influences.

Production Solution

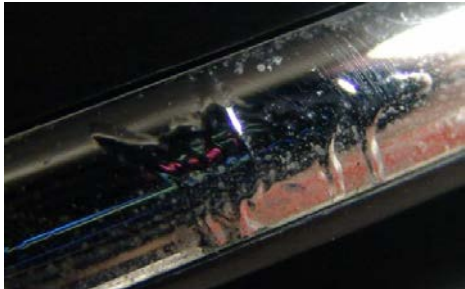

Not applicable.

Technical Bulletin



Service

Conditions Covered by Warranty

Illustrations of components with complaints on the chrome coating:

Damage code	Possible cause	Measure	Warranty
Bubbles	Surface defect in production (no external impact).	Parts replacement	Yes
 			

Technical Bulletin

Flaking-off	Surface defect in production (no external impact).	Parts replacement	Yes
			
Cracks	Surface/material defect in production (no external impact).	Parts replacement	Yes
			

i Tip:

If parts are replaced according to the repair manual, the following points must be observed:

- Do not bend the components as this can lead to tiny cracks in the surface.

Conditions Not Covered by Warranty

Complaints on external chrome/aluminum surfaces (for example trim/protective strips, batches and so on):

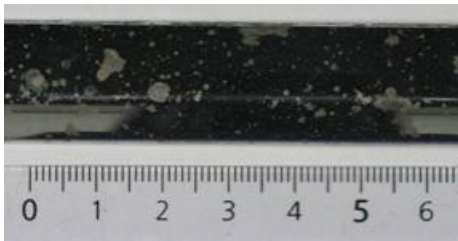
- marks (brown)
- stone chips
- rust film
- oxidation
- matt/cloudy/milky marks
- hairline cracks in the surface

Technical Bulletin

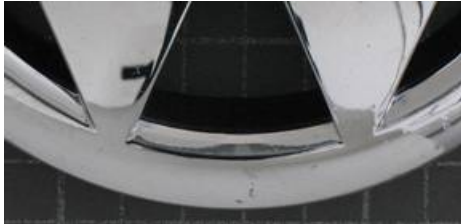
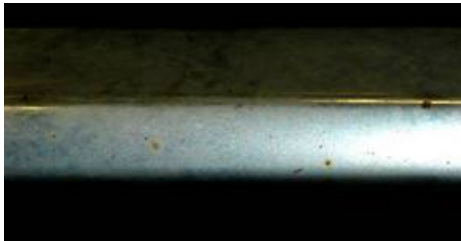

The surfaces of chrome and anodized aluminum parts can get damaged by:

- external influences
- improper cleaning
- improper cleaning products.

Damage code	Possible cause	Measure	Warranty
<i>Brown marks</i>	External impact through road salt	Polish / parts replacement	No



Technical Bulletin

Stone chips	Damage through external impact	Parts replacement	No
			
Rust film/industrial dust	External impact	Clean/polish	No
			
Oxidation	Permanent dirt (particularly in areas with a lot of humidity/dirt, for example: sill panels)	Polish	No
			

Technical Bulletin


Illustrations of components with complaints on the anodized aluminum:

Damage code	Possible cause	Measure	Warranty
<i>Matt/cloudy/milky marks</i>	Discoloring through alkaline cleaner	Polish/parts replacement	No



--

Technical Bulletin

<i>Hairline cracks in the anodized coat</i>	External impact through possible bending of the components during the installation in service	Parts replacement	No
			

Warranty

Information only.

Required Parts and Tools

Not applicable.

Additional Information

All part and service references provided in this Technical Bulletin are subject to change and/or removal. Always check with your Parts Dept. and Repair Manuals for the latest information.