

Tech Tips

TT 64-14-04

Date: November 28, 2014

2012-2015 Beetle/Beetle Convertible Front Window Contacts Rear Window Glass, Window Misaligned

February 27, 2015: Update to Information.



Note:

DO NOT replace any components for this concern.

Complaints of the front window glass contacting the rear glass may be caused by the front window glass becoming loose in the regulator clamps. (See Figs. 1 and 2)

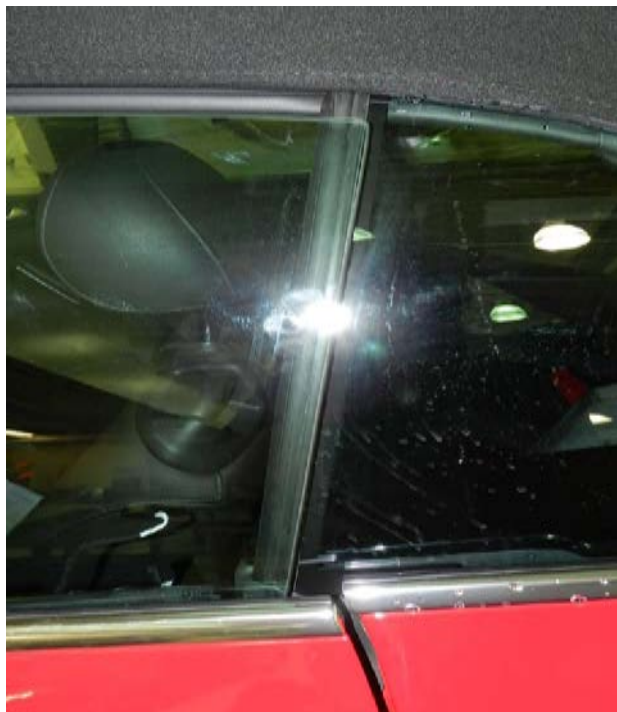


Fig. 1

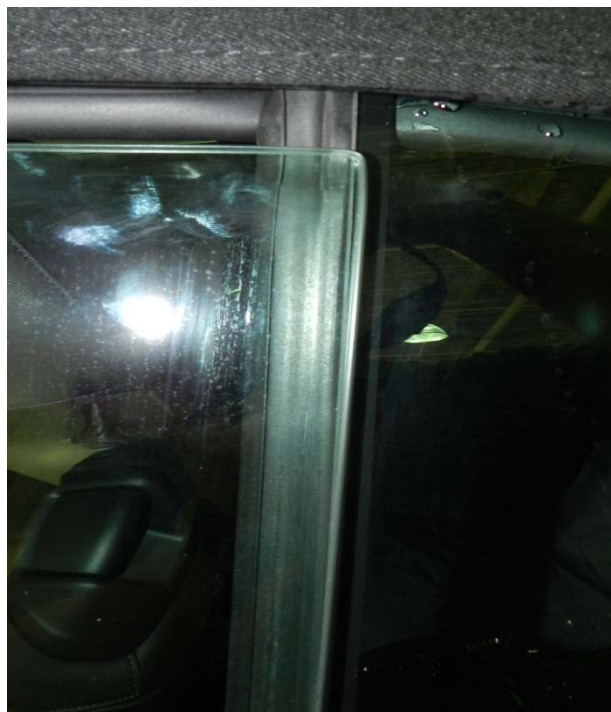


Fig. 2

Service Information

This occurs due to insufficient torque on the fixation bolt for the glass clamp on the regulator elevator. The glass can slip in the clamp and lose its alignment to the rear side window, causing contact between the front door window and the rear window glass. (See Fig. 3)

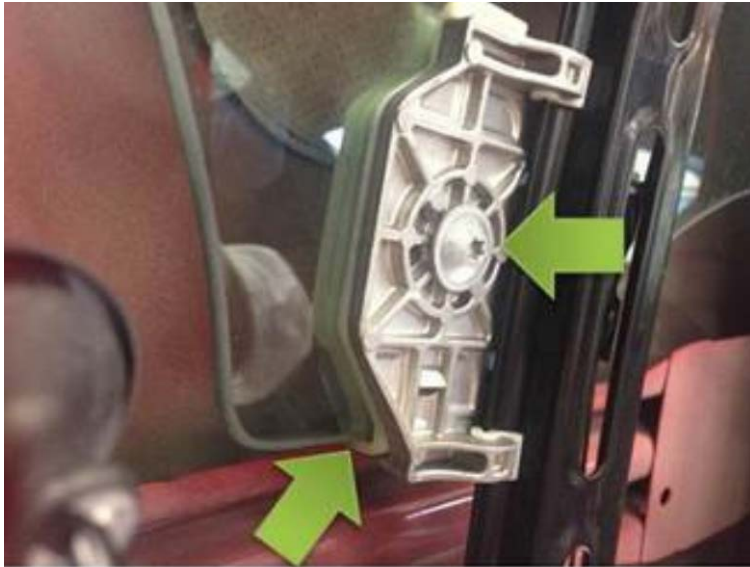


Fig. 3

To repair, remove the front door trim panel to gain access to the window regulator; see Repair Manual Group 70, Interior Trim in Elsa.

Remove the Door Inner Cover; see Repair Manual Group 57, Front Doors, and Central Locking System in Elsa.

Raise or lower the window so the rear glass clamp is accessible.

Service Information

Remove the bolt for the regulator clamp then remove the plastic clamp from the elevator and window glass by releasing the clip toward the bottom of the clamp then sliding the clamp up. (See Figs. 4 and 5)

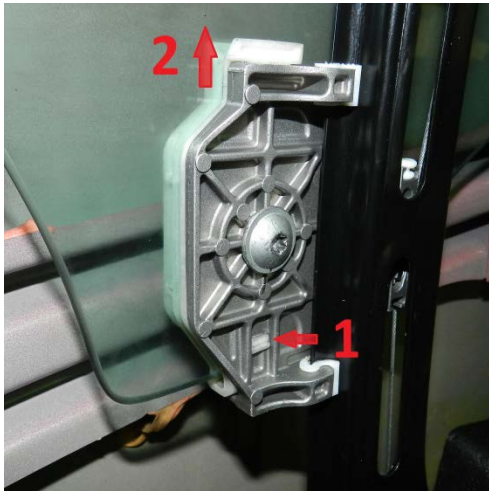


Fig. 4



Fig. 5

Apply a few drops of Loctite brand 242 medium strength thread locking compound (blue) to the threaded insert in the plastic regulator clamp. (See Fig. 5)



Fig. 5

Service Information

 **Note:**

Thread locking compound should not be solely applied to the clamp bolt as the effectiveness may be reduced. Apply directly to the threads on the back of the regulator clamp.

Reinstall the plastic clamp on the regulator in the reverse order of removal and reinstall the clamp bolt.

Adjust the front door window accordingly; see Repair Manual Group 64 Glass, Window Regulators in Elsa.

Once the window glass is properly adjusted, torque both the front and rear regulator clamp bolts to **7 Nm** using torque wrench 1783 (VAG1783). (See Fig. 6)



Fig. 6

Check for proper function of the window with the door open and closed before reassembling.

Install all pieces in reverse order of removal.