

Technical Service Bulletin



90 Discoloration in image from top view camera

90 15 55 2030193/2 June 9, 2015. Supersedes Technical Service Bulletin Group 90 number 12-31 dated July 16, 2012 for reasons listed below.

Model(s)	Year	VIN Range	Vehicle-Specific Equipment
A6, A7, A8	2011 - 2017	All	Top view camera system

Condition

REVISION HISTORY		
Revision	Date	Purpose
2	-	Revised header data (Added model years)
1	6/16/2012	Initial publication

Customer states all or part of the picture generated from the top view camera system has an unnatural hue (Figure 1).

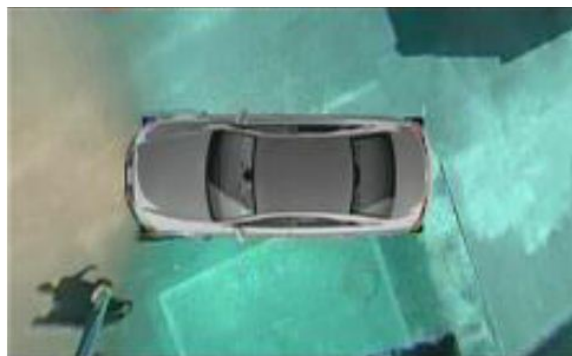


Figure 1. Image of top view with unnatural hue.

Technical Background

To achieve a natural-looking top view camera image, the camera system constantly adjusts the displayed colors based on environmental conditions.

In certain lighting conditions, the system responds to vibrant nearby colors (from the vehicle or other objects) by automatically adding a complementary color (Figure 2) to rebalance toward white, which can lead to color deviations. For example, a red object can cause the system to add a green hue. The strength of the added color depends on the brightness of the object and the ambient light.



Figure 2. Complementary color wheel.

Production Solution

Not applicable.

Service

This is a normal condition. Do not perform any repairs.

Warranty

This TSB is informational only and not applicable to any Audi warranty.

Additional Information

All parts and service references provided in this TSB (2030193) are subject to change and/or removal. Always check with your Parts Department and service manuals for the latest information.