

Technical Service Bulletin



57 "Is key in vehicle?" message appears with key in vehicle

57 15 10 2040239/2 May 20, 2015. Supersedes Technical Service Bulletin Group 57 number 15-09 dated April 16, 2015 for reasons listed below.

Model(s)	Year	VIN Range	Vehicle-Specific Equipment
A3 Cabriolet	2015	000001 - 085276	Audi advanced key

Condition

REVISION HISTORY		
Revision	Date	Purpose
2	-	Revised <i>Service</i> (Completely revised)
1	4/16/2015	Initial publication

- The message "Is key in the vehicle?" is displayed in the information panel even though the key is in the vehicle (Figure 1).
- This condition occurs intermittently in vehicles with Audi advanced key.

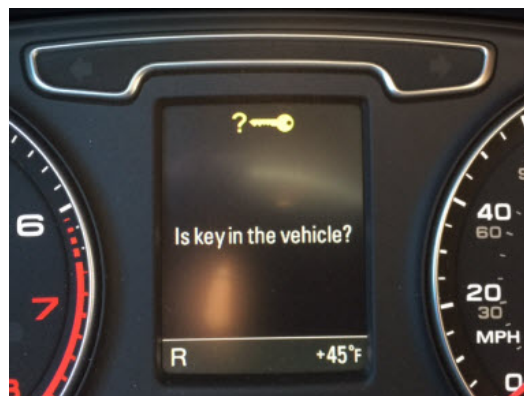


Figure 1. "Is key in the vehicle?" message.

Technical Background

This condition is a result of incorrect parameterization programmed into the B7 access start module from the factory. Because of the incorrect parameters, the access start module does not wait long enough for the remote key to respond to a location request. As a result, the module does not see the remote key and the message is displayed.


Production Solution

Updated parameters are used in series production.

Service

Before updating parameters:

- Open the remote key battery compartment and check for damage caused by outside influence, including water damage, corrosion, or laundry detergent residue. If damage is found, the remote key will need to be replaced, but the parameters should still be updated with the instructions below. Note that replacement of a remote key damaged through outside influence is not covered under warranty.
- If damage from outside influence is not found, check the remote key battery voltage to confirm that it is 3.0V or higher. If the voltage is less than 3.0V and the battery was previously replaced, contact TAC for additional steps. It is possible that a secondary issue exists with the remote key, but the parameters should still be updated with the instructions below.

 **Tip:** For additional information on remote key battery concerns, see TSB 2039814: *Remote control key low battery voltage warning in DIS* (DTC B147918).

Update the parameters:

1. Follow all instructions in TSB 2011732: *00 Software Version Management (SVM), operating instructions*.
2. Update the parameters of the entry and start authorization control unit, J518 (address code B7), using SVM.

Model	Old Parameter Part Number	Old Parameter Version	New Parameter Part Number	New Parameter Version	SVM Code Input
A3 Cabriolet	8V7909577A	001	8V7909577A	0003	B7A002

During the SVM update, a dialog box with the message “A parameter setting requiring changing was detected” may appear (Figure 2).

If the message appears, proceed with updating the parameter setting. The updated parameters allow the access start module to wait longer to recognize the key in the vehicle.

The new parameter setting can be recognized by the version “0003” (Figure 3 and Figure 4).

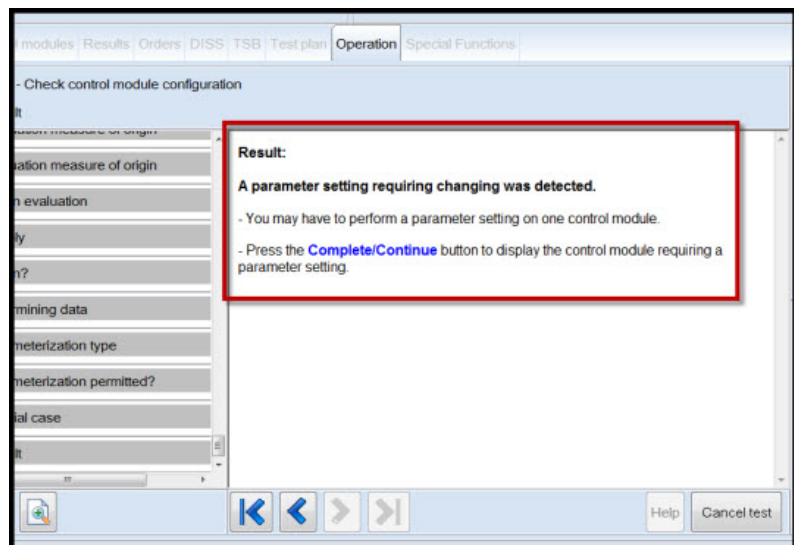


Figure 2. Parameter setting change dialog in ODIS.

Should the parameterization on this control module now be performed?

8V7909577A - 0003 - 000000000000000000000001

Campaign: SELECTION

Output: For the control module **B7 - Interface for access/start system** a parameter setting was calculated.

Figure 3. New parameter set with version 0003.

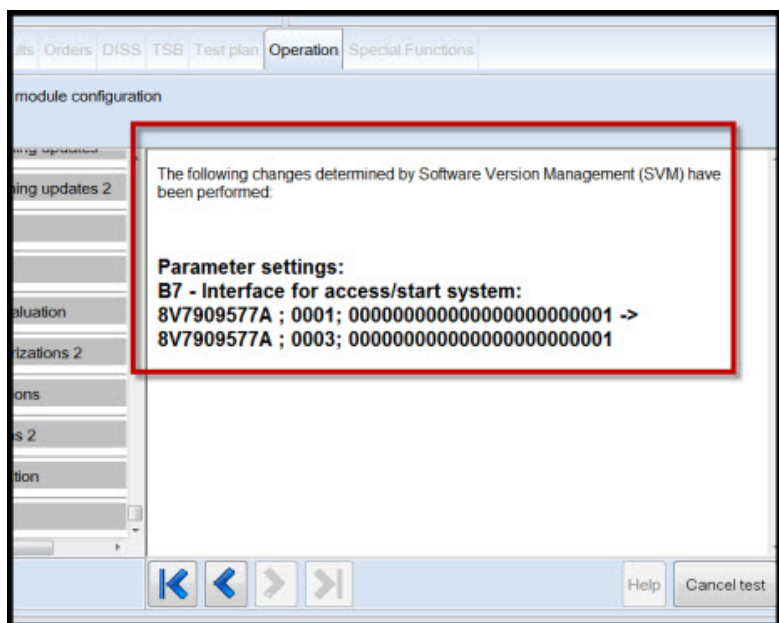


Figure 4. Parameter setting complete.

Technical Service Bulletin



Warranty

Claim Type:	Use applicable claim type. If vehicle is outside any warranty, this Technical Service Bulletin is informational only.		
Service Number:	9666		
Damage Code:	0039		
Diagnostic Time:	GFF	0150 0000	Time stated on diagnostic protocol (Max 50 TU)
	Road test prior to service procedure	No allowance	0 TU
	Road test after service procedure	No allowance	0 TU
	Technical diagnosis at dealer's discretion (Refer to Section 2.2.1.2 and Audi Warranty Online for DADP allowance details)		
Claim Comment:	As per TSB #2040239/2		

All warranty claims submitted for payment must be in accordance with the *Audi Warranty Policies and Procedures Manual*. Claims are subject to review or audit by Audi Warranty. Replacing the remote key is not allowed under this bulletin.

Additional Information

All parts and service references provided in this TSB (2040239) are subject to change and/or removal. Always check with your Parts Department and service manuals for the latest information.