

TECH TIP

11MY-17MY INJECTION QUANTITY TEST

Supersedes TT-13-003 dated 6-21-2013

OVERVIEW:

The purpose of this procedure is to provide instructions in performing an Injection Quantity Test on 2011 and newer Hino conventional series trucks.

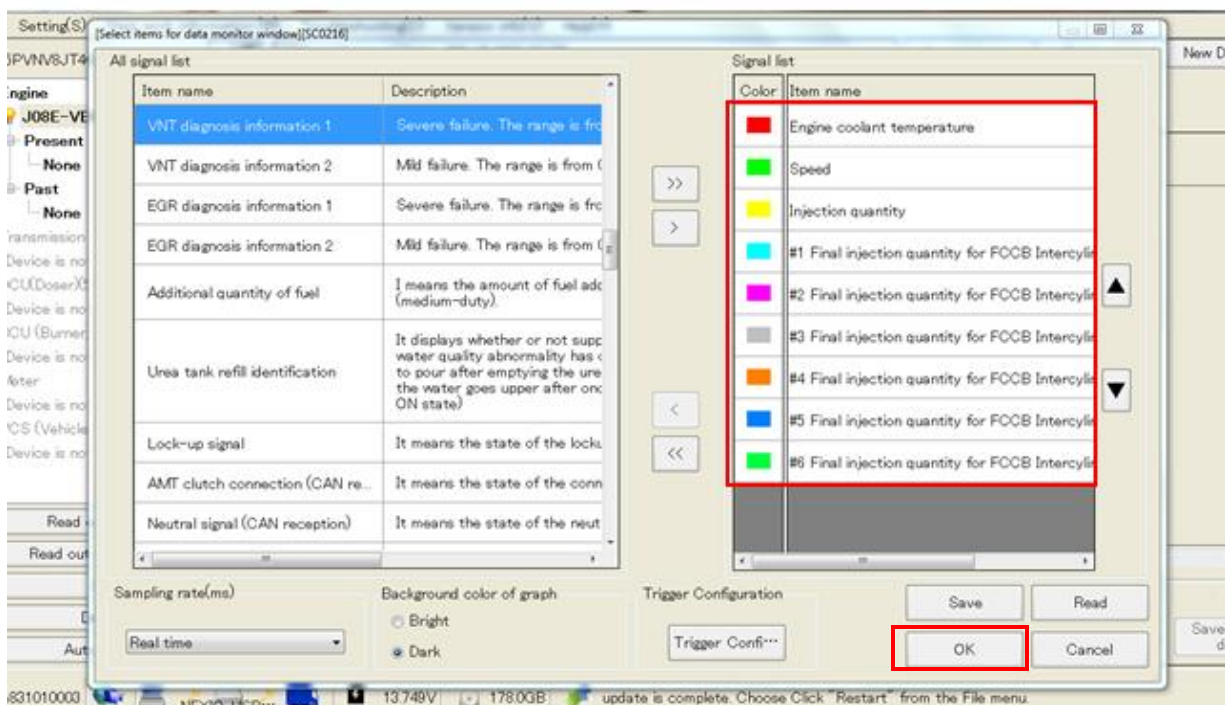
SUBJECT VEHICLES: 11MY-17MY Conventional trucks

Note: This technical tip is provided as technical information and is not authorization for a warrantable repair.

Repair Procedure:

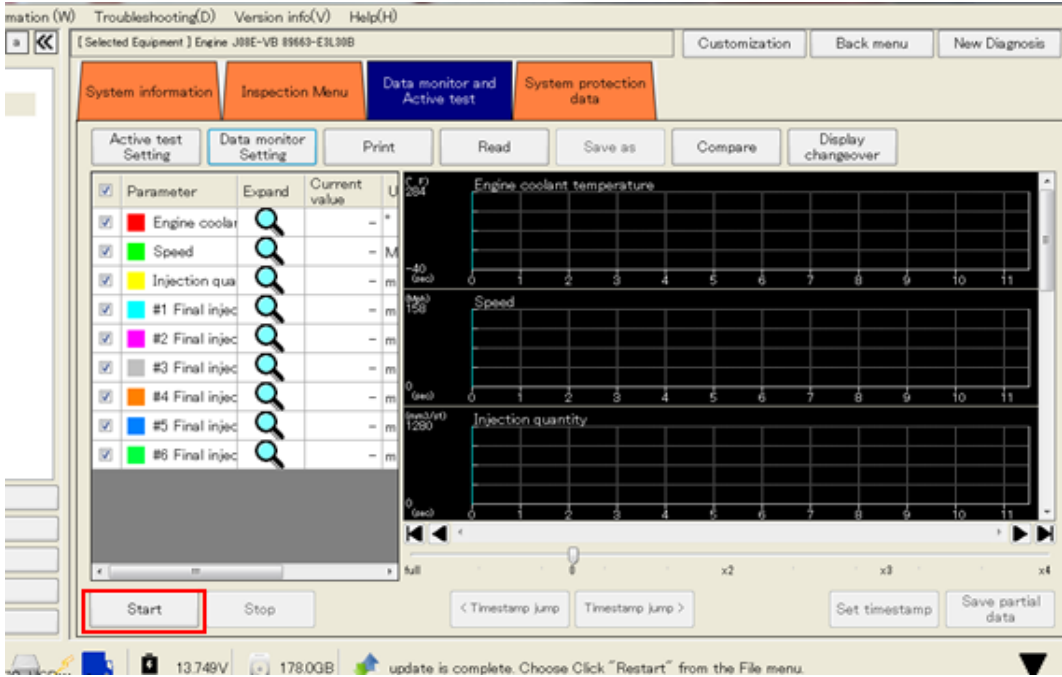
Note: Make sure to disconnect the exhaust system before running this test to rule out a possible exhaust restriction.

1. Connect DX2 to the truck.
2. Bring the engine to full operating temperature of 175-185 F (79-85 C) by way of a short road test.
3. Select a Data monitor template: Engine coolant temperature, engine speed, injection quantity, FCCB correction final value 1-6 and select OK.

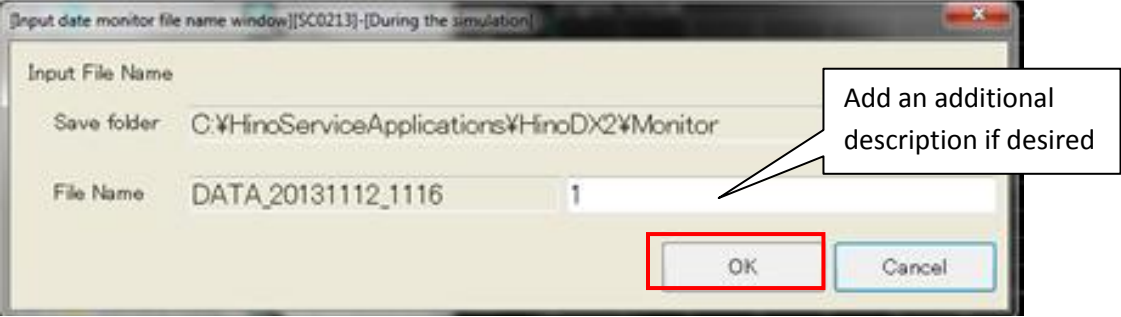


TECH TIP

4. Start the engine, select the Start button and select OK in the input data monitor file name window.

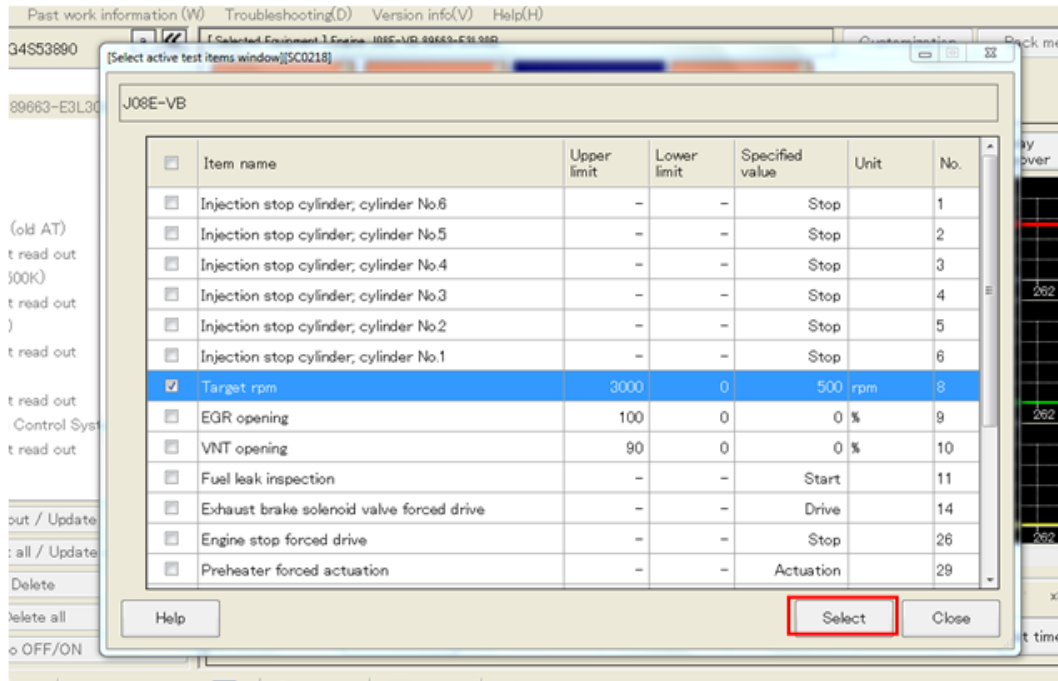


Note: you can enter in a title for the file prior to selecting OK (see below) or you can wait until the recording is done and then select Save As.



TECH TIP

- Increase the engine RPM.** From the Data monitor screen select the active test and choose Target RPM. Enter in 1500, select start and record for 9 minutes. (continue recording as you move to the next step)



- Record at idle.** Drop the rpm back to idle and record for 1 minute then select stop.
- Your recording can be found in the following location: C:hinoservice applications/DX2/Monitor.
 - If MACROS is unavailable, forward the test information to Tech Assist for conversion