



Countries: CANADA, UNITED STATES Document ID: IK1500084  
 Availability: ISIS Revision: 4  
 Major System: FUEL SYSTEMS Created: 9/8/2015  
 Current Language: English Last Modified: 10/28/2015  
 Other Languages: NONE Author: Charles Schroeder  
 Viewed: 696

[Less Info](#)

Hide Details

Coding Information

<b>Copy Link</b> 	<b>Copy Relative Link</b> 	<b>Bookmark</b>  <a href="#">View My Bookmarks</a>	<b>Add to Favorites</b> 	<b>Print</b> 	<b>Provide Feedback</b> 	<b>Helpful</b>  8	<b>Not Helpful</b>  0
----------------------	-------------------------------	--	-----------------------------	------------------	-----------------------------	-------------------------	-----------------------------

Title: Applying Snow Valve Advanced Logic - Using the E - Fix Option

Applies To: WorkStar with Snow Valve and N13 built 06/20/2014 through 04/05/2015

## Change Log

Please refer to the change log text box below for recent changes to this article:

10/28/ added step about saving and pressing program button after applying logic. 10/23/2015 - Added a note in the Description that the release date for the E-Fix was 10/14/2015. Your DLB database must be up to date for the E-Fix to be present. 10/13/2015 - Work instructions changed to reflect the E-Fix / Campaign installation process. 10/09/2015 - Specified that Dealer Level III is required to apply advanced logic based on dealer feedback. 09/09/2015 - Initial Article Release
--

## Description

This document will outline the procedure for updating the Body Controller with an "E-Fix" template to allow proper operation of the snow valve.

1. Identify the snow valve feature installed
2. Apply the E - Fix
3. This entire process occurs with the Key Off

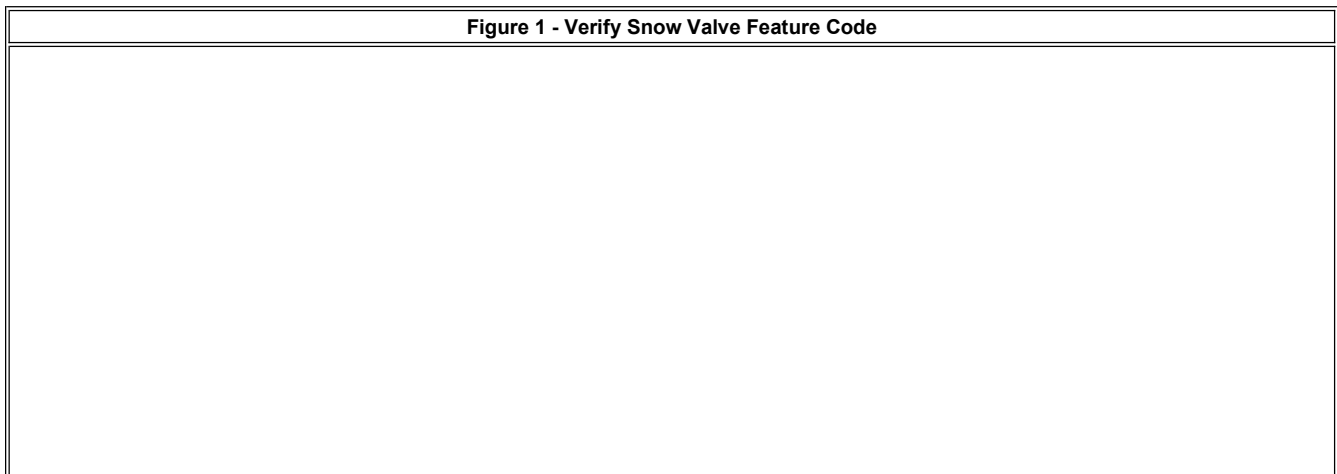
### NOTE:

The E-Fix was released on 10/14/2015. You can check this in DLB. Help - About Diamond Logic Builder. Please ensure your DLB database has been updated on or after 10/14/2015 to allow the E-Fix to be in your database. You must be connected to the internet to update the database. Connect the EZ-Tech to the internet, and launch DLB.

## Special Tool(s) / Software

Tool Description	Tool Number	Comments	Instructions
Diamond Logic Builder		EZ-Tech Software	

## Repair Step(s)

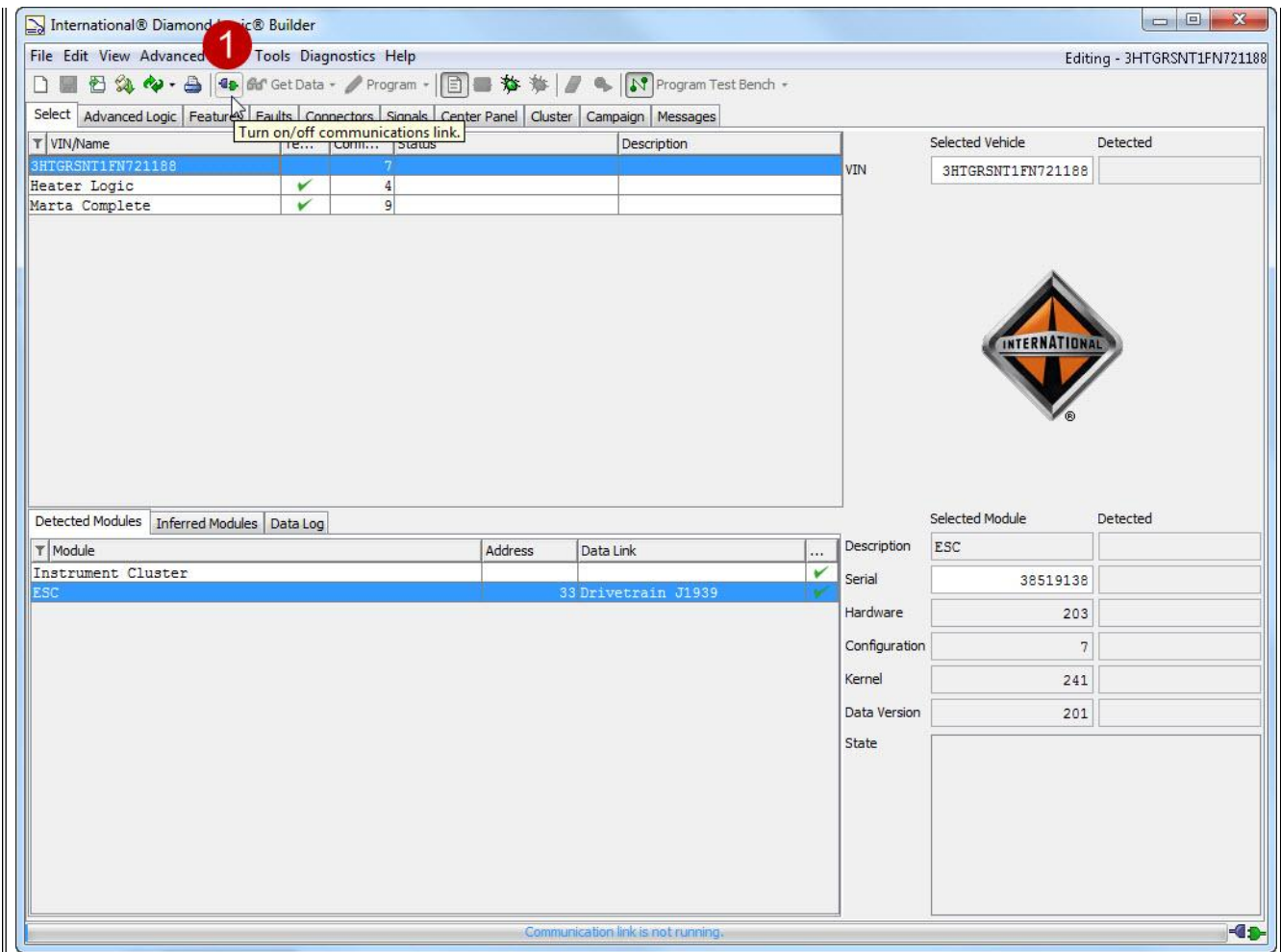


The screenshot shows the 'International Vehicle Information' interface. At the top right, there are navigation links: 'My Favorite', 'Brand', 'Preferences', 'Sites', and 'Logoff'. Below these is a search bar for 'Chassis / VIN Number' with the value 'FN721188'. A red circle '1' points to this field. Below the search bar is a 'Print' button and a 'Select tab(s) to print' dropdown. A red circle '2' points to the 'Components' tab in the main navigation menu. The main content area shows a table of components for VIN 3HTGRSNT1FN721188, with 249 components found. A red circle '3' highlights the component with S.No. 242, Class Description 'MISC', and Part Code '0595BLT', which is described as 'BC PROG, SNOW VALVE ENGINE INTAKE Engine Air Intake'.

S.No	Class Description	Parts Catalog Component	Component Line Drawing	Description
1	FRAMES	0001CAJ	0001CAJ	FRAME RAIL 120,000 PSI YIELD 456.0" OAL Heat Treated Alloy Steel (120,000 PSI Yield); 10.866" x 3.622" x 0.433" (276.0mm x 92.0mm x 11.1mm); 456.0" (11582mm) Maximum OAL
2	FRAMES	0001LLA	0001LLA	FRT BUMPER-SWEPT BACK (STEEL) Steel, Swept Back
3	FRAMES	0001VZZ	0001VZZ	REINFORCEMENT, FRAME FRONT ; Use when Mounting Equipment at Front of Frame
4	FRAMES	0001WDS	0001WDS	20" INTEGRAL FRONT FRAME EXT Integral; 20" In Front of Grille
5	FRAMES	0001WDU	0001WDU	FRONT CROSSMEMBER W/MTG FLANGE FOR PUMP for Hydraulic Pump, Mounting Flange to Accommodate Pump
6	FRAMES	0001WTX	0001WTX	WHEEL BASE RANGE 199" THRU 264" 199" (505cm) Through and including 264" (670cm)
7	FRAMES	0001570	0001570	TWO FRONT TOW HOOKS Frame Mounted
8	FRAMES	0001572	0001572	TWO REAR TOW HOOKS
9	FRONT AXLES	0002ARY	0002ARY	MERITOR MFS-20-133A 20K FT AXLE WIDE TRK Wide Track, I-Beam Type, 20,000-lb Capacity
238	MISC	0595BJJ	0595BJJ	BC PROG, PARK REGEN SW 2010 CLUSTER Aftertreatment, for 2010 Cluster
239	MISC	0595BJL	0595BJL	BC PROG, TRACT CONTROL IND 2010 CLUSTER Traction Warning Light, for Air Brakes, for 2010 Cluster
240	MISC	0595BJS	0595BJS	BC PROG, PTO IND/ALARM 2010 CLUSTER Indicator and Alarm Connected to Remote Power Module, for 2010 Cluster
241	MISC	0595BKD	0595BKD	BC PROG, BODY CONTROLLER FOR TRUCK 2 for Truck Body Controller #2
242	MISC	0595BLT	0595BLT	BC PROG, SNOW VALVE ENGINE INTAKE Engine Air Intake
243	MISC	0595BMW	0595BMW	BC PROG, UPSHIFT IND LIGHT
244	MISC	0595BRZ	0595BRZ	BC PROG, ENGINE PARAMETERS MaxForce 11 & 13

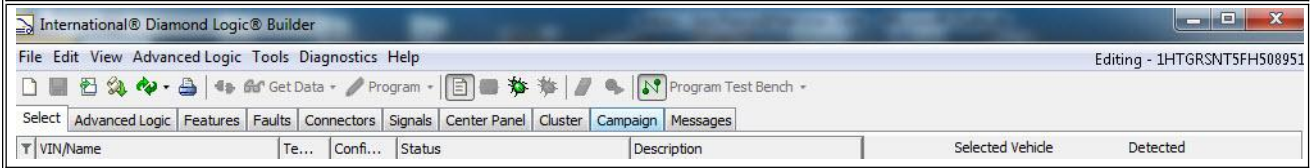
1. Enter the Chassis number in the Service Portal
2. Navigate to the 'Components' tab
3. Identify the Snow Valve feature code the vehicle uses (0595BLT or 0595BUC)

Figure 1 - Connect to the vehicle with Diamond Logic Builder



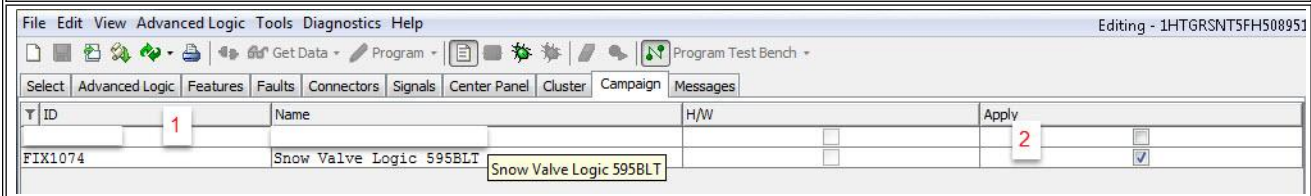
1. Key off → Connect to the vehicle with Diamond Logic Builder

**Figure 2 - Locate The Campaign tab**



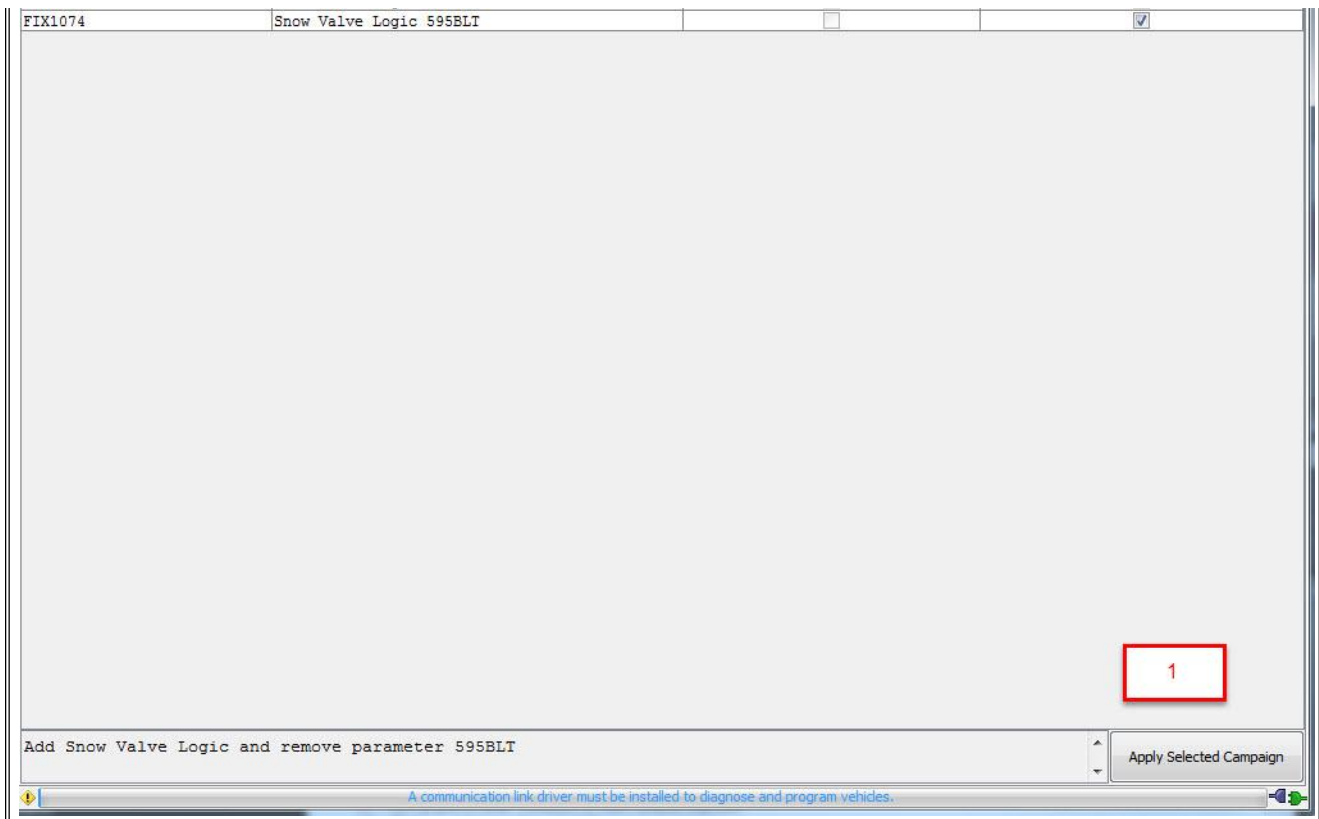
1. Navigate to the 'campaign' tab
2. Click on the tab

**Figure 3 - Verify logic block**



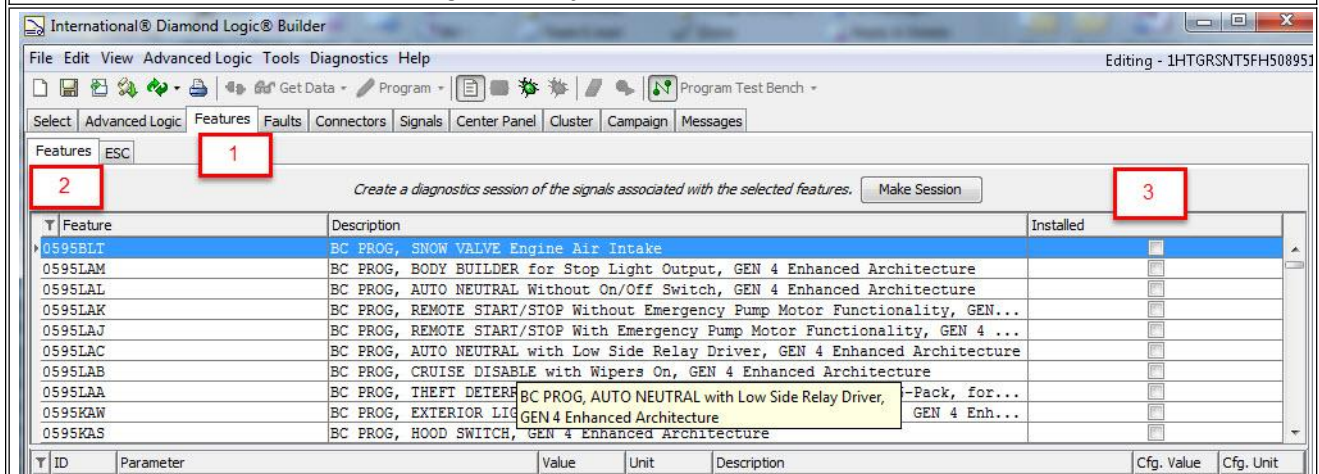
1. Verify FIX1074 Snow valve logic 595BLT or FIX1075 Snow valve logic 595BUC is present.
2. Click on the "apply" button for your desired feature.

**Figure 4- Apply Selected Campaign**



1. Click on the 'Apply Selected Campaign' button.
2. Return to the "select" tab.
3. Press the save icon - status should now show "modified".
4. Ensure the key is still off, and your selected vin is highlighted, program the vehicle by selecting the "program" icon.
5. Monitor the Status bar to verify programing is completed.

Figure 5 - Verify 595BLT or 595BUC is Removed



1. Click on the features tab.
2. Click on the filter tab and select either feature code 595BLT or 595BUC.
3. Verify the check mark is no longer present.

Figure 6 - Verify Advanced Logic Block is Installed

The screenshot shows the International Diamond Logic Builder interface. The main workspace displays a logic diagram for a 'Snow Valve WorkStar' block. The diagram consists of several input signals on the left: 'Winter\_Mode\_Switch\_Input', 'Engine\_Intake\_Switch\_Signal', and 'Key\_State\_In\_Run\_Position'. These inputs feed into a central logic block. Inside this block, there are two parallel conditions for 'Engine\_Speed': one for '> 300 RPM' and one for '< 300 RPM'. Above the block is the signal 'Underhood\_Air\_Var'. The output of the logic block is 'Snow\_Valve\_Motor\_Req'. Below the diagram, there are additional inputs: 'Engine\_Ambient\_Temperature' and 'AAT\_Underhood...'. On the right side of the interface, there are two tables. The top table lists various vehicle components like 'RPM4', 'Switches', 'Transmission', etc. The bottom table lists 'Custom V...' with columns for 'Signal/Value' and 'Unit', containing entries like 'Snow\_V...', 'Key\_St...', 'Underh...', 'AAT\_Un...', 'AAT\_Ou...', 'Winter...', 'Engine...', and 'Engine...'.

1. Click on the Advanced Logic tab and verify the block "Snow Valve WorkStar" is present.
2. Disconnect from DLB.
3. Return to Service.

Hide Details

Feedback Information

Viewed: 695  
 Helpful: 8  
 Not Helpful: 0

No Feedback Found