



Countries:	CANADA, TAIWAN, UNITED STATES, GUAM, KOREA, SOUTH KOREA	Document ID:	IK0700072
Availability:	ISIS	Revision:	2
Major System:	EXHAUST	Created:	6/5/2014
Current Language:	English	Last Modified:	11/3/2015
Other Languages:	NONE	Author:	Keith Kierzek
Viewed:	2043		

[Less Info](#)

Hide Details

Coding Information

Copy Link 	Copy Relative Link 	Bookmark View My Bookmarks	Add to Favorites 	Print 	Provide Feedback 	Helpful 9	Not Helpful 1
---------------	------------------------	---	----------------------	-----------	----------------------	------------------	----------------------

Title: ISX Setting 3556-18 (FC3167), 5298-18 (FC1691), or 3482-2 (FC1925) Caused by Missing AFI Poppet

Applies To: ISX15 CM2350 Engines with SCR built prior to February 2014

Change Log

Please refer to the change log text box below for recent changes to this article:

Date	Details
06/05/2014	Article Created
02/19/2015	Added pictures and part numbers

Subject

Cummins® ISX15 CM2350 X101 Engines with SCR setting fault codes 3556-18 (FC3167), 5298-18 (FC1691), or 3482-2 (FC1925) may be caused by a missing poppet in the EcoFit™ aftertreatment fuel injector

Fault Codes

SPN	FMI	Cummins FC	Description
3556	18	3167	Aftertreatment Doser - Data Valid But Below Normal Operating Range - Moderately Severe Level
5298	18	1691	Aftertreatment 1 Diesel Oxidation Catalyst Conversion Efficiency - Data Valid But Below Normal Operating Range - Moderately Severe Level
3482	2	1925	Aftertreatment Fuel Shutoff Valve - Data Erratic, Intermittent, or Incorrect

Description

This document informs the field of a missing poppet in the EcoFit™ aftertreatment fuel injector causing fault codes 3556-18 (FC3167), 5298-18 (FC1691), or 3482-2 (FC1925) to set.

The new EcoFit™ aftertreatment fuel injector is susceptible to the inner poppet falling out due to a worn spring retainer. This situation can increase the probability of fouling that can cause a high restriction of the injection of fuel into the aftertreatment system. Malfunctioned EcoFit™ aftertreatment fuel injectors will have a hole in the center of the injection point. A normal EcoFit™ aftertreatment fuel injector will have a visible plunger (poppet) at the center of the injection point.



Figure 1: Missing Poppet - EcoFit™ Aftertreatment Fuel Injector

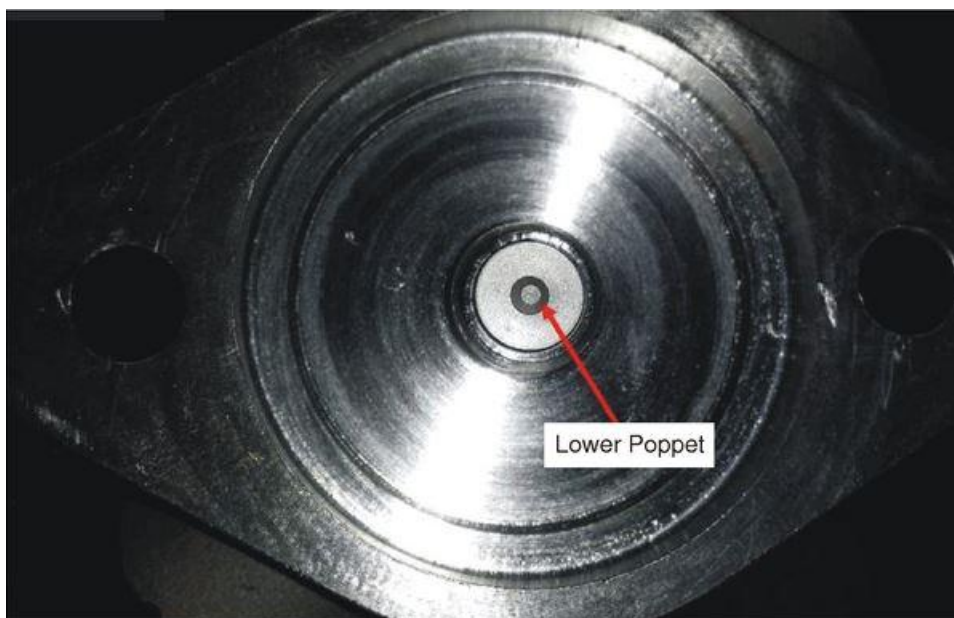


Figure 2: Poppet - EcoFit™ Aftertreatment Fuel Injector

Service Parts Information

Engine Family	AFI Navistar Part Number	AFI Cummins Part Number	AFI Service Part Number
Cummins ISX15	3017692C91	5294110	4309349NX

Repair Procedure

For ISX15 CM2350 X101 Engines:

If the EcoFit™ aftertreatment fuel injector is missing the lower poppet, reference **Cummins® TSB 130159** located on QuickServe Online in the "TSB" tab under the "Service" section, or type "TSB130159" into the search bar, to find repair instructions.

If the EcoFit™ aftertreatment fuel injector is NOT missing the lower poppet, follow normal repair procedures. For ISX15 CM2350 Engines, return to Fault Code Analyzer and EDS to diagnose the fault codes.

NOTE: For further information reference **Cummins® TSB 130159**. This technical service bulletin can be located on QuickServe Online in the "TSB" tab under the "Service" section.

Warranty Information

The information in this document has no effect on Navistar's present warranty coverage or repair practices, nor does it authorize campaign actions. See **Cummins® TSB 130159** for further warranty guidelines on units equipped with ISX Engines.

Resources

[QuickServe Online](#)

Hide Details
Feedback Information

Viewed: 2042

Helpful: 9

Not Helpful: 1

No Feedback Found