



**Countries:** BAHAMAS, BOLIVIA, BELIZE, CANADA, CHILE, TAIWAN, COLOMBIA, COSTA RICA, DOMINICAN REPUBLIC, ECUADOR, EL SALVADOR, TRINIDAD AND TOBAGO, UNITED STATES, URUGUAY, VENEZUELA, MEXICO, ARUBA, NICARAGUA, PERU, PUERTO RICO, Curaçao, GUAM, GUATEMALA, GUYANA, HAITI, HONDURAS, JAMAICA, KOREA, SOUTH KOREA, PANAMA

**Availability:** ISIS, Bus ISIS, FleetISIS

**Major System:** PROGRAMMING SUPPORT

**Current Language:** English

**Other Languages:** [Français](#), [Español](#).

**Viewed:** 10985

**Document ID:** IK0400028

**Revision:** 9

**Created:** 11/21/2006

**Last Modified:** 11/19/2015

**Author:** Brad Lamparski

[Less Info](#)

Hide Details Coding Information

Copy Link	Copy Relative Link	Bookmark <a href="#">View My Bookmarks</a>	Add to Favorites	Print	Provide Feedback	Helpful 2691	Not Helpful 879
-----------	--------------------	---	------------------	-------	------------------	-----------------	--------------------

**Title:** How to Program Parameters After Changing a WABCO FPB ECU ( Park Brake Shows NA )

**Applies To:** All HPV with WABCO Full Power Brakes

### CHANGE LOG

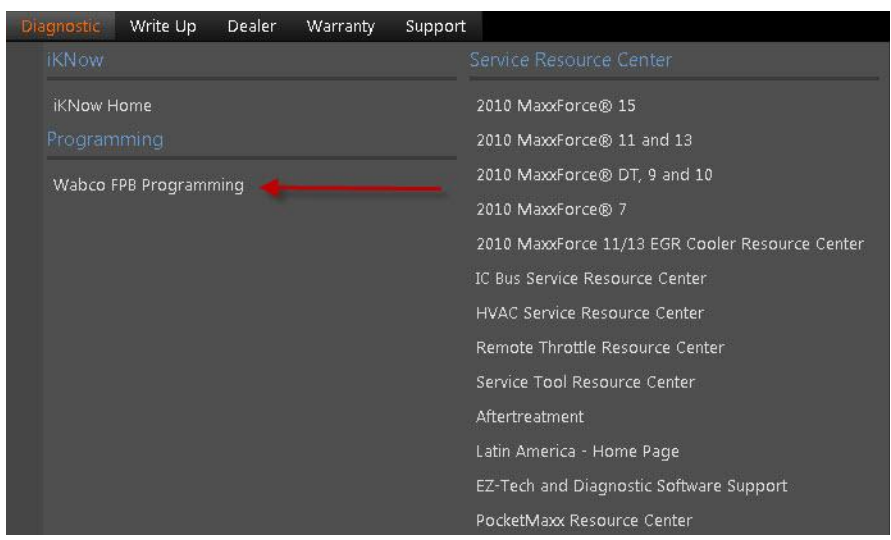
Please refer to the change log text box below for recent changes to this article:

11/19/2015 - Change Log Added. Link to update report tool added for version checking.

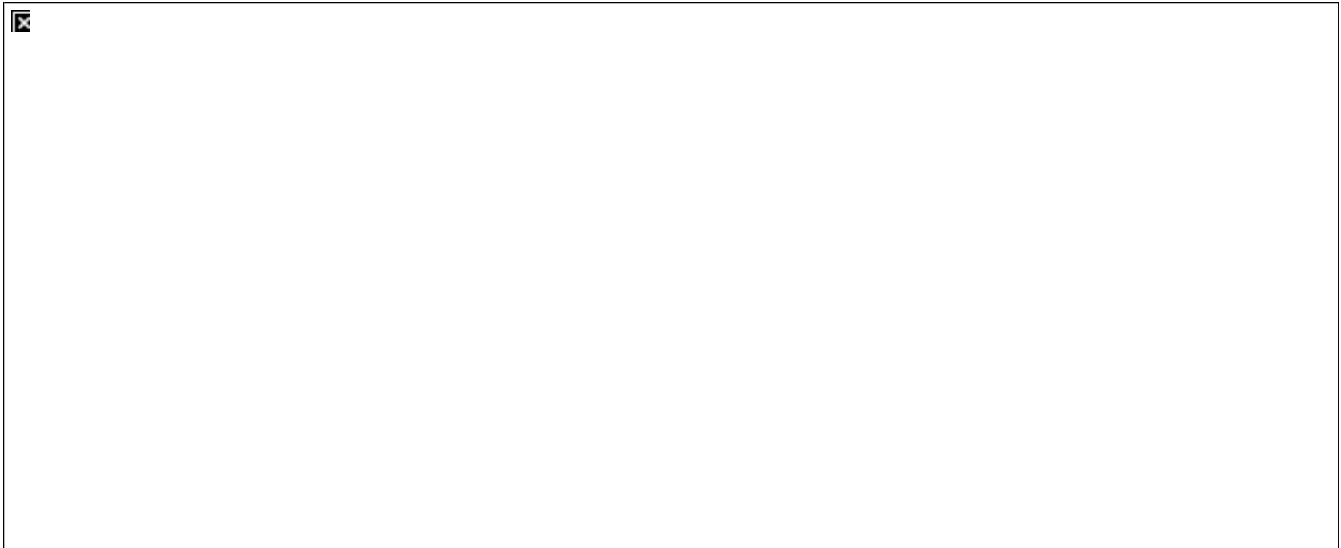
After changing a WABCO Full Power Brakes ECU it is necessary to program the parameters into the new ECU for that VIN.

You must have WABCO Toolbox version 8.7 or later. If you do not have the latest version use the [update report tool](#) to scan your computer and download the software as needed.

1. Change ECU.
2. Get onto ISIS with the EZTech that you're going to use to program the truck with.
3. From the ISIS home page, move your mouse over **Diagnostic** along the top of the screen.



4. Click on **Wabco FPB Programming**.
5. Enter your Chassis number and click **submit**.



6. Click on [Download File](#).

If you get an error message like this:



Click on the link: [Wabco Fix](#)

Download the program to your desktop and run it. You do not need admin rights to do this. Now, the problem should be resolved.

Please re-try the step 6.

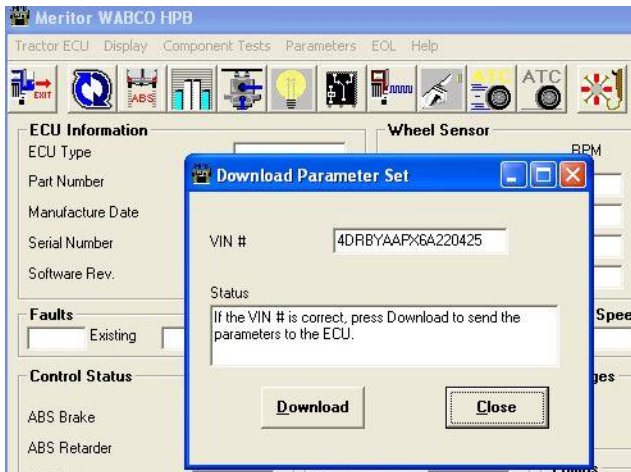
7. Hook the EZTech up to the vehicle, turn the key on and open the WABCO diagnostic software under HABS.

8. Click on [Parameters](#) in the tool bar along the top of the screen.



9. Click on [Write Parameters](#). You will see your VIN number in the box.

10. Click on the [Download](#) button.



11. After programming it is necessary to cycle the key to complete the process.



**Merritor WABCO requires pre-authorization for all repairs over \$125. For any repairs above that amount, you must contact Ontrac at 1-800-535-5560 prior to making the repair. For further information look at warranty policy letter [07-002G](#)**

Hide Details

Feedback Information

Viewed:	10984
Helpful:	2691
Not Helpful:	879

No Feedback Found

Copyright © 2015 Navistar, Inc.