



Service Bulletin

PRELIMINARY INFORMATION

Subject: PQC Transmission Exchange 8L90 8 Speed Automatic Transmission Has Ended

Models: 2015 Cadillac Escalade
2015 Chevrolet Corvette, Silverado
2015 GMC Sierra, Yukon, Yukon XL
Equipped with 8L90 (M5U) Automatic Transmission

Condition/Concern

The 8L90 8 speed automatic transmission restriction has ended.

Engineering would like to thank all dealers that participated in this restriction program.

Thanks to your participation the following PIs and bulletins were created.

14-07-30-001: Information on Transmission Adaptive Functions and Correcting Low Mileage Harsh Shifts - (Sept 11, 2014)

PI1405: Diagnostic Tips for DTC P2818: Transmission Control Solenoid Valve 8 Stuck On - (Feb 3, 2015)

PIP5274: Illuminated MIL. DTC P16F3 May Be Set As An Active Or History Code In The TCM - (March 3, 2015)

PIP5278: Transmission Fluid Leak Out the Vent - (March 19, 2015)

PIT5392: Normal Characteristic - Detent or Click Felt As The Accelerator Is Pressed - (March 26, 2015)

PI1450: Snap, Pop, Click, Tick or Clunk Noise on a Launch - (Mar 27, 2015)

PIP5281: 8L90 Repeat Harsh Shift After Latest TCM Calibration And Relearning The Shift Adapts - (April 10, 2015)

15178: Service Update for Inventory Vehicles Only - Transmission Gear Whine Noise - Expires April 30, 2016 - (April 22, 2015)

PI1473: MIL Illuminated with Firm Shifts, DTCs P0606 or P2818 - (May 5, 2015)

PIP5293: Transmission Noise On Engine Start-Up - (May 13, 2015)

15389: Service Update for Inventory and Customer Vehicles - Torque Converter Clutch (TCC) Shudder - Expires with Base Warranty - (May 26, 2015)

15396: Service Update for Inventory and Customer Vehicles - Harsh Shift When Starting in Low Temperatures - Expires with Base Warranty - (July 10, 2015)

PIP5337: Shake Or Shudder On Acceleration Excessive Engine RPM Fluctuation - (Oct 13, 2015)

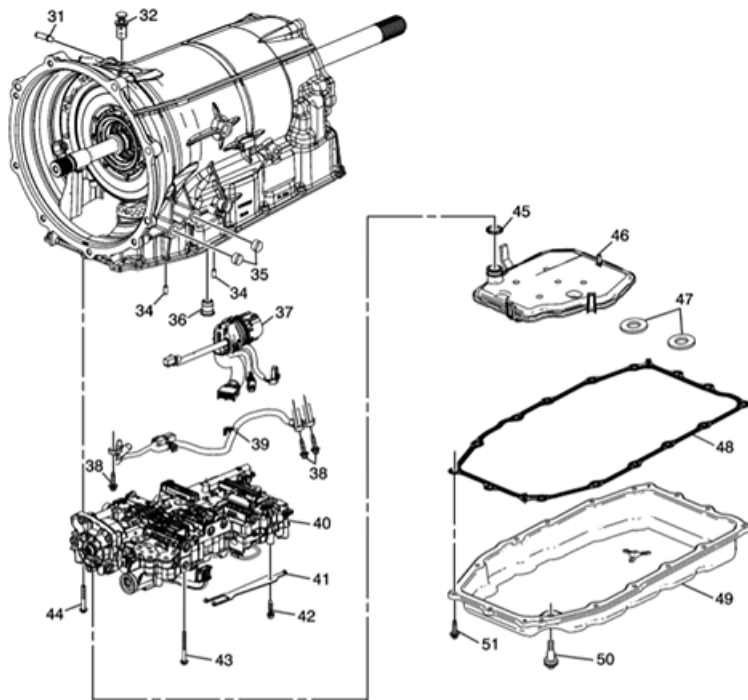
15-NA-007: Firm Garage Shifts, Start Up Clunk, DTC P16F3 (Reprogram TCM) - (Oct 22, 2015)

Recommendation/Instructions

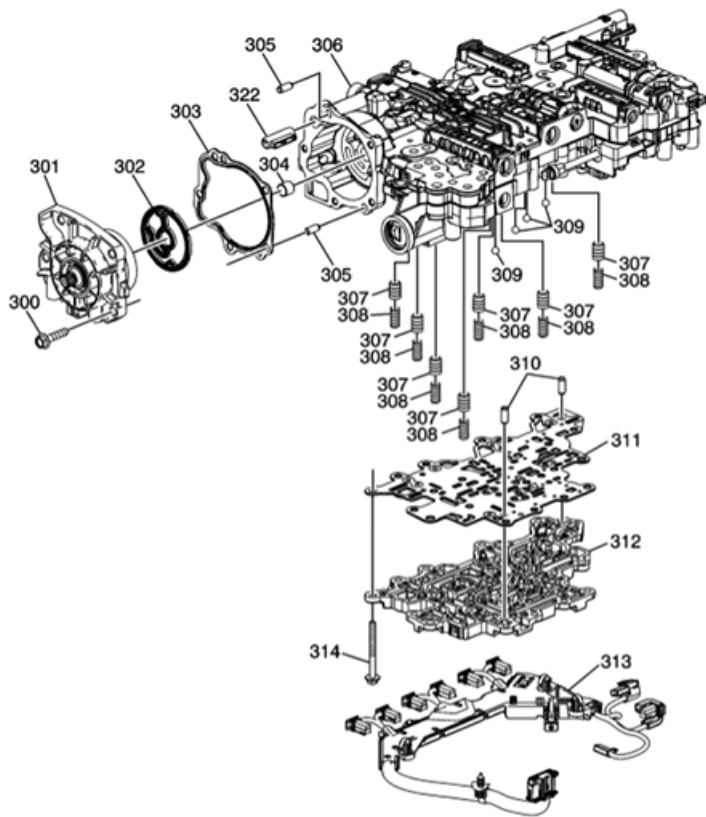
The following list of components are available for servicing the 8L90 (M5U) automatic transmission.

Note: The call out numbers in the following illustrations are from the parts catalog. Only the parts listed below each of the following illustrations are available for servicing the 8L90 (M5U) automatic transmission.

Note: For any questions on parts availability or part numbers please contact Partech at 855-462-2737. Do not contact TAC for any part concerns.



- (31) A/Trans Vent
- (32) Transmission Fluid Fill Tube Plug
- (34) Control Valve Body Locating Pin
- (35) Transmission Cooler Pipe Fitting Seal
- (36) Clutch Housing Fluid Passage Seal
- (37) A/Trans Wiring Harness
- (38) Output Speed Sensor Wiring Harness Bolt
- (39) Output Speed Sensor Wiring Harness
- (40) Control (with Body and Valve) Valve Assembly
- (41) Manual Shaft Detent Lever Spring
- (42) Manual Shaft Detent Lever Spring Bolt
- (43) Control Valve Solenoid Body Bolt
- (44) Control Valve Solenoid Body Bolt
- (45) A/Trans Fluid Filter Seal
- (46) A/Trans Fluid Filter
- (47) A/Trans Fluid Pan Magnet
- (48) A/Trans Fluid Pan Gasket
- (49) A/Trans Fluid Pan
- (50) A/Trans Fluid Pan Drain Plug
- (51) A/Trans Fluid Pan Bolt



(300) A/Trans Fluid Pump Bolt

(301) A/Trans Fluid Pump Assembly

(302) A/Trans Fluid Pump Seal

(303) A/Trans Fluid Pump Gasket

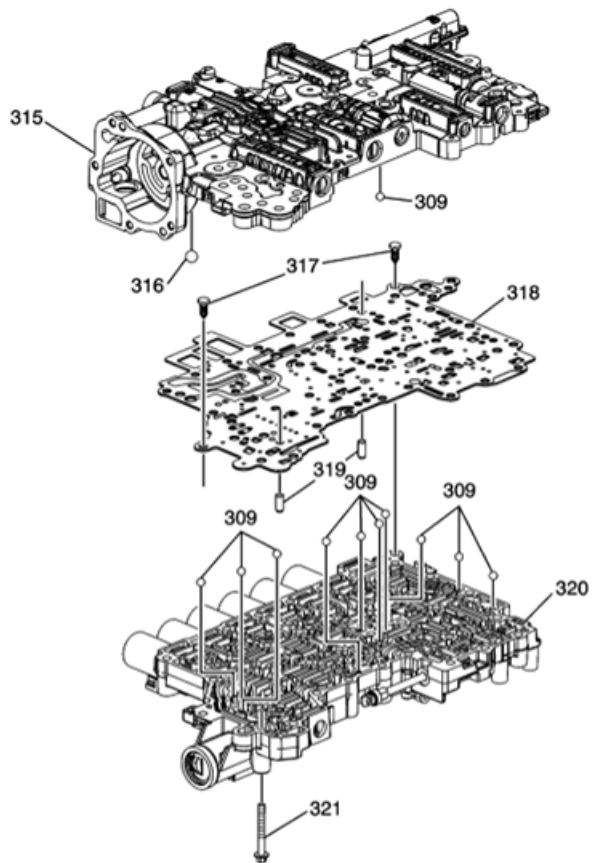
(304) A/Trans Fluid Pump Drive Shaft Bushing

(305) A/Trans Fluid Pump Locator Pin

(313) A/Trans Control Wiring Harness Assembly

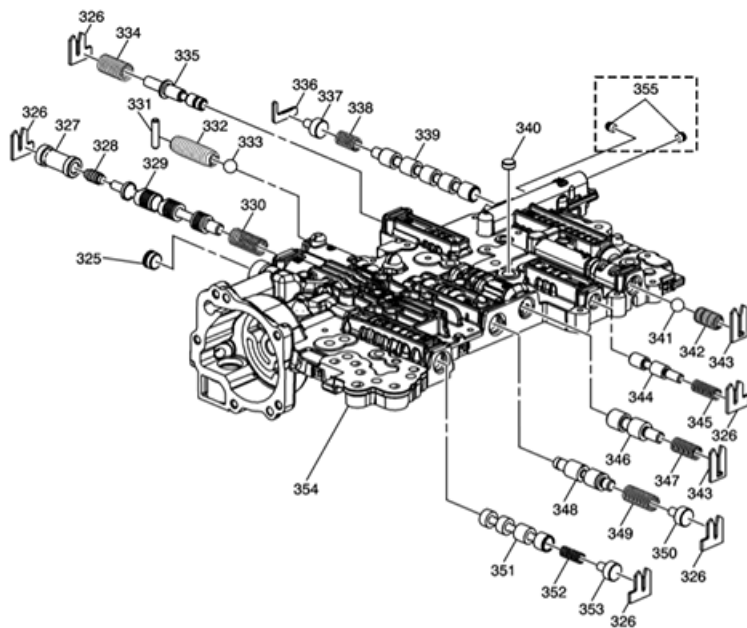
(314) Control Valve Channel Plate Bolt

(322) A/Trans Fluid Passage Sleeve



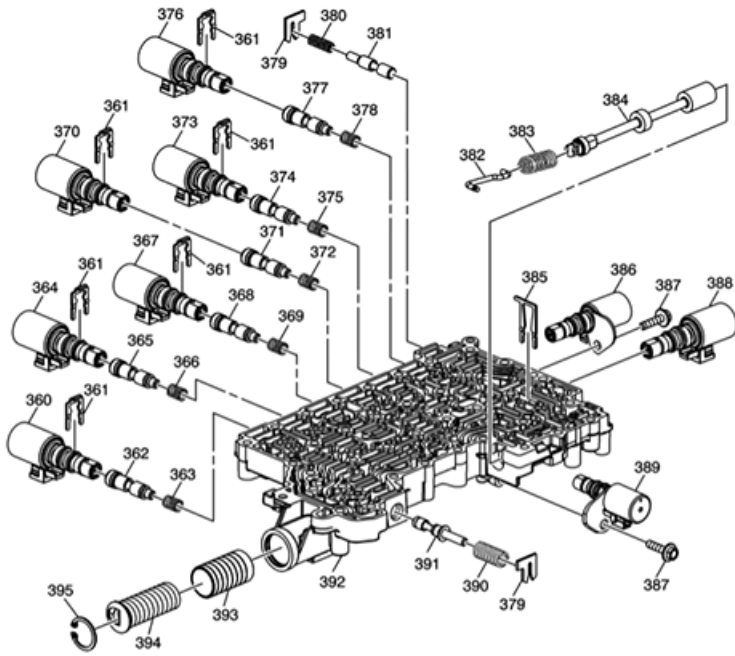
(317) Spacer Plate Retainer

(321) Control Valve Solenoid Body Bolt



(326) Valve Spring Retainer

(343) Valve Spring Retainer



(361) Control Solenoid Valve Retainer

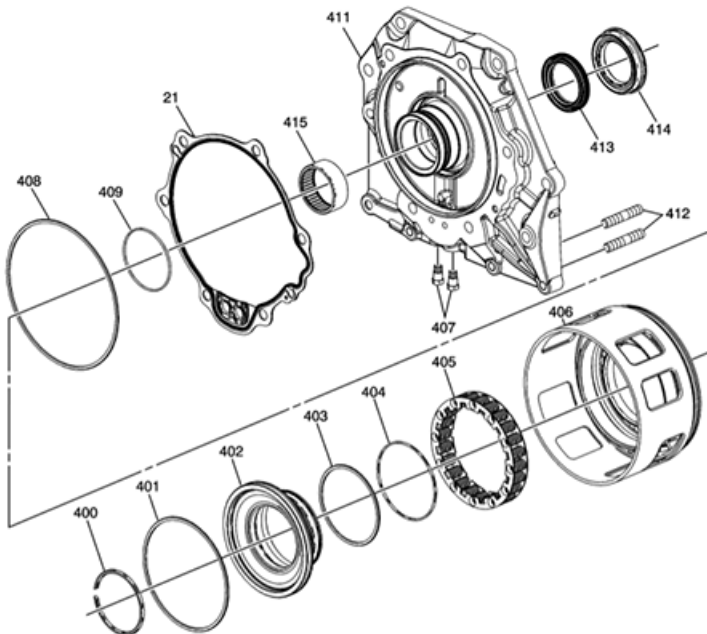
(379) Valve Spring Retainer

(382) Manual Valve Link

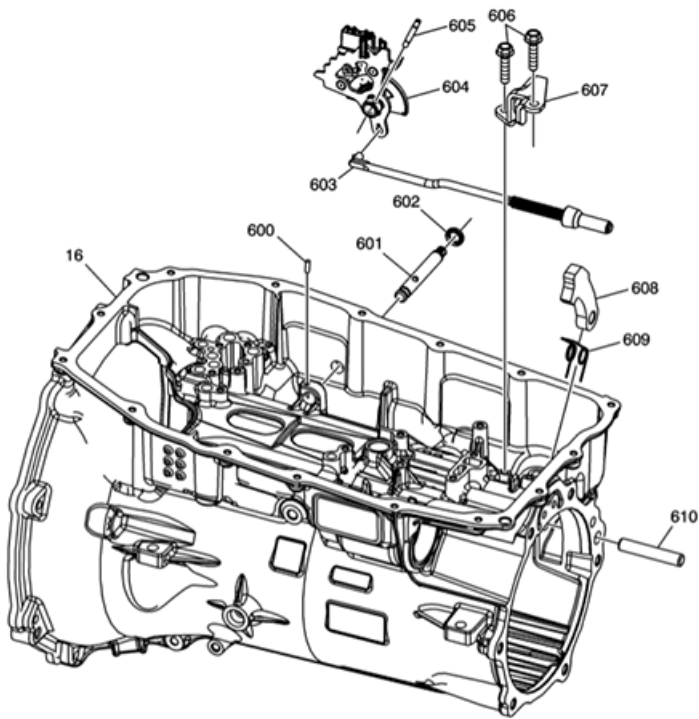
(383) Manual Valve Spring

(384) Manual Valve

(385) Control Solenoid Valve Retainer



(414) Propeller Shaft Transmission Flange Fluid Seal (Outer)



- (16) A/Trans Case Assembly
- (600) Manual Shift Shaft Pin
- (601) Manual Shift Shaft
- (602) Manual Shift Shaft Seal
- (603) Park Pawl Actuator Assembly
- (604) Manual Shift Shaft Position Switch Assembly
- (605) Manual Shift Shaft Detent Lever Hub Pin
- (606) Park Pawl Actuator Bracket Bolt
- (607) Park Pawl Actuator Bracket
- (608) Park Pawl
- (609) Park Pawl Spring
- (610) Park Pawl Shaft

GM bulletins are intended for use by professional technicians, NOT a "do-it-yourselfer". They are written to inform these technicians of conditions that may occur on some vehicles, or to provide information that could assist in the proper service of a vehicle. Properly trained technicians have the equipment, tools, safety instructions, and know-how to do a job properly and safely. If a condition is described, DO NOT assume that the bulletin applies to your vehicle, or that your vehicle will have that condition. See your GM dealer for information on whether your vehicle may benefit from the information.



WE SUPPORT VOLUNTARY TECHNICIAN CERTIFICATION