



# Service Bulletin

## PRELIMINARY INFORMATION

**Subject:** Seat Itch Noise With The Front Tilt Full Up

**Models:** 2016 Cadillac ATS-V  
With Recaro Seats (RPO W2E)

The following diagnosis might be helpful if the vehicle exhibits the symptom(s) described in this PI.

### Condition/Concern

A customer may comment of an itch type noise coming from the seat area with the front tilt in the all the way up position.

### Recommendation/Instructions

To eliminate an itch noise a greasing method has been developed for the stop on the drive gear of the front tilt motor. Please follow steps below:

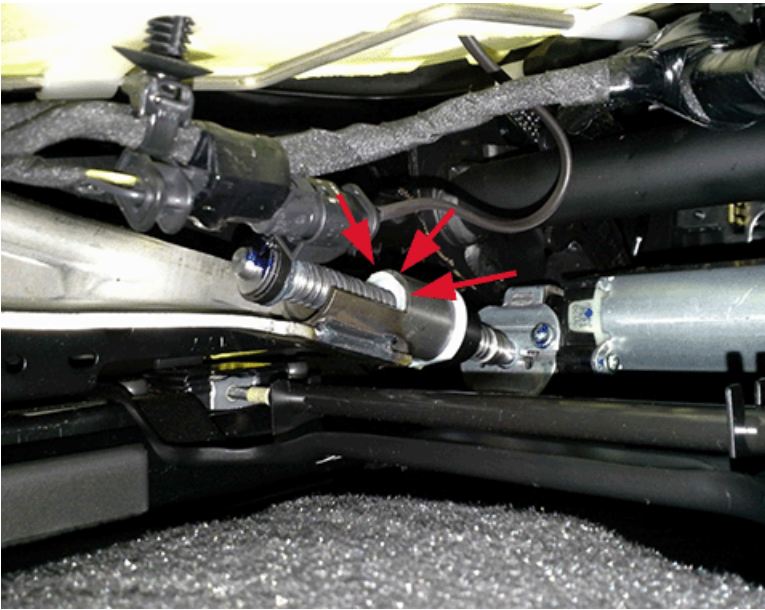
1. Retrieving grease from the REAR tilt motor to use for the front tilt motor.
  - a. Lift the rear seat switch up to move the rear tilt motor to the full up position to access the rear seat adjuster. The rear tilt motor is easily accessed from the rear of the seat bottom.



- b. Use grease from existing tilt motor. Only a small amount is necessary. Below is a picture of a suggested brush to use when removing and installing grease from and to worm gears.



**Note:** IT IS NOT RECOMMENDED TO USE ANY GREASE OTHER THAN WHAT IS ON THE EXISTING WORM GEARS. PLEASE USE CAUTION NOT TO CONTAMINATE GREASE WITH ANY DIRT OR DEBRIS.



2. Pulling the front nose cover off.
  - a. Move the front tilt all the way up. Using the front of the switch, push up. This helps with pulling the front nose cover off.
3. Remove the front nose cover.
  - a. Pull the Outboard side of the nose cover straight out (towards the brake pedal).



b. Pull the Inboard nose cover straight out (toward brake pedal)



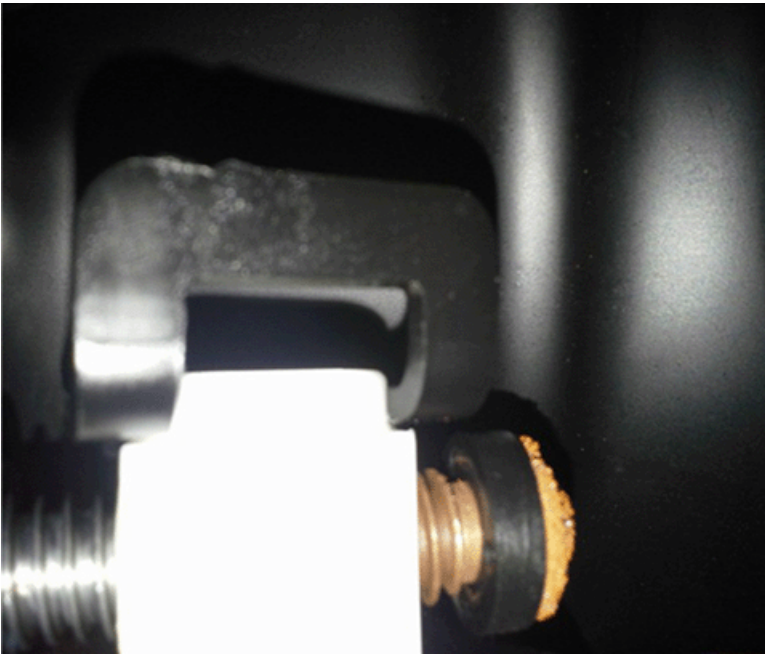
4. Move the seat rearward to access area.
  - a. Use the for/aft switch and push rearward (towards the rear of the car).



5. View from front of seat.
  - a. This is what you will see when you have the seat set up to add grease.



6. Bolt on the end of the worm gear
  - a. Next slide shows a close-up of the worm gear and area to add grease.



b. Add grease to the area in YELLOW. Next Slide will show the brush used, you Can use any paint brush that will get grease In that location.



c. Use Right hand and hold the brush at a 90 degree angle from your hand for best fit. Next slide shows what the worm gear will look like with grease on it.



7. Reinstalling front nose cover.

- a. Line up the locator to the opening in the seat bracket.
- b. Push Outboard nose cover in until you hear an audible "CLICK".
- c. Push the Inboard side of the nose cover until you hear an audible "CLICK". This side has two clips, so it MIGHT make TWO audible "CLICKS".

## Warranty Information

For vehicles repaired under warranty use:

Labor Operation	Description	Labor Time
7080248 *	Lubrication of the Front Tilt Motor Drive Gear	0.4 hr
* This is a unique labor operation for bulletin use only. This number will not be published in the Labor Time Guide.		

Please follow this diagnostic or repair process thoroughly and complete each step. If the condition exhibited is resolved without completing every step, the remaining steps do not need to be performed.

GM bulletins are intended for use by professional technicians, NOT a "do-it-yourselfer". They are written to inform these technicians of conditions that may occur on some vehicles, or to provide information that could assist in the proper service of a vehicle. Properly trained technicians have the equipment, tools, safety instructions, and know-how to do a job properly and safely. If a condition is described, DO NOT assume that the bulletin applies to your vehicle, or that your vehicle will have that condition. See your GM dealer for information on whether your vehicle may benefit from the information.



WE SUPPORT VOLUNTARY TECHNICIAN CERTIFICATION