



# Service Bulletin

## PRELIMINARY INFORMATION

**Subject:** Creak or Pop Type Noise Coming From Center Of Dash

**Models:** 2013-2015 Chevrolet Equinox  
2013-2015 GMC Terrain

The following diagnosis might be helpful if the vehicle exhibits the symptom(s) described in this PI.

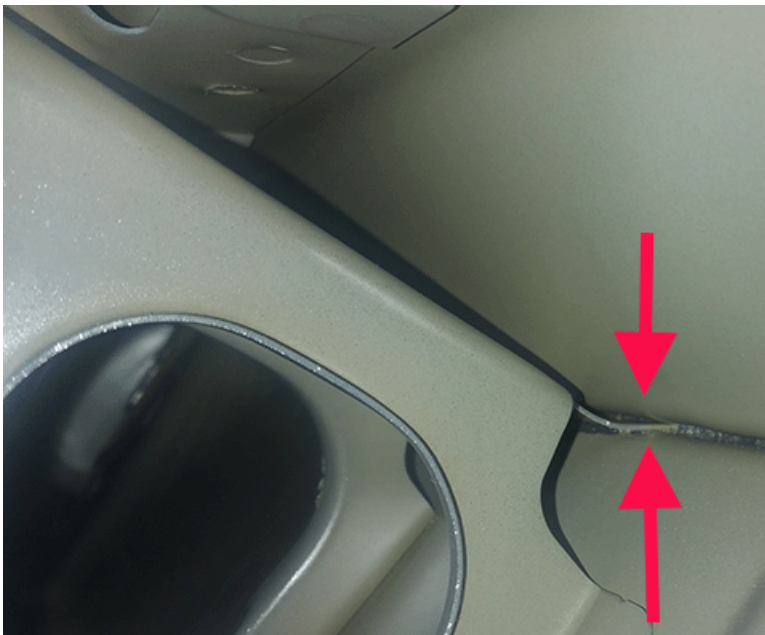
### Condition/Concern

Some customers may comment on a creak, pop, tick or itch type noise from the center of the dash or base of the windshield area while driving the vehicle – typically when the suspension is loaded from side to side.

This noise may be picked up with chassis ears on the windshield wiper arms or the steering rack mounts.

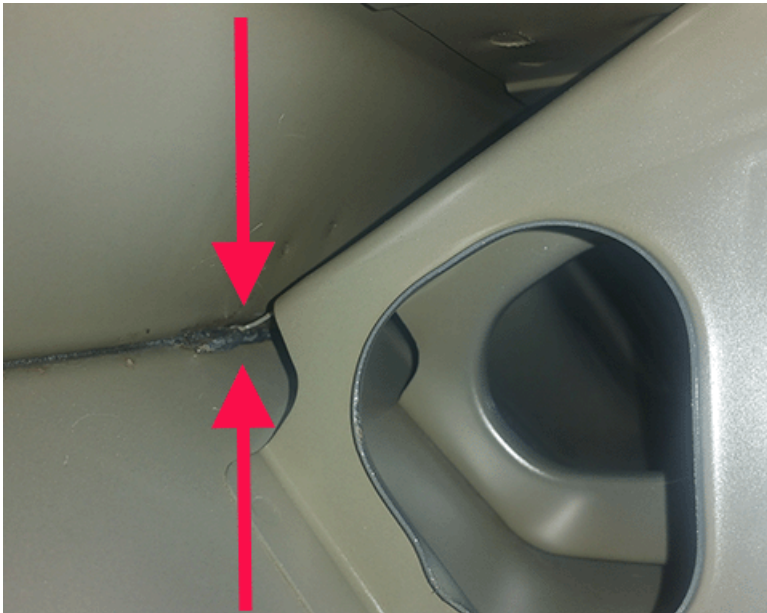
### Recommendation/Instructions

Remove the wiper arms and the cowl screen and locate the center bracket.



Using a prybar, slightly bend the bracket back to clear the bulkhead surface. Drive to verify the noise has changed or is gone.

Apply \* 3M™ Urethane (High Viscosity) Sealer, P/N 08609, between the bracket and bulkhead and around the bracket itself. Let cure following manufacturer's recommendations.



Allow to set, reassemble and verify the repair

\* We believe this source and their products to be reliable. There may be additional manufacturers of such products. General Motors does not endorse, indicate any preference for or assume any responsibility for the products from this firm or for any such items which may be available from other sources.

### Warranty Information

For vehicles repaired under warranty use:

Labor Operation	Description	Labor Time
* 2080588	Adjust The Center Bracket And Apply Urethane.	0.7 hr
* This is an unique labor operation for bulletin use only. This will not be published in the Labor Time Guide.		

Please follow this diagnostic or repair process thoroughly and complete each step. If the condition exhibited is resolved without completing every step, the remaining steps do not need to be performed.

GM bulletins are intended for use by professional technicians, NOT a "do-it-yourselfer". They are written to inform these technicians of conditions that may occur on some vehicles, or to provide information that could assist in the proper service of a vehicle. Properly trained technicians have the equipment, tools, safety instructions, and know-how to do a job properly and safely. If a condition is described, DO NOT assume that the bulletin applies to your vehicle, or that your vehicle will have that condition. See your GM dealer for information on whether your vehicle may benefit from the information.



WE SUPPORT VOLUNTARY TECHNICIAN CERTIFICATION