



Service Bulletin

PRELIMINARY INFORMATION

Subject: Second Row Seat Belt Wet And/Or Carpet Wet Near The C-Pillar Area

Models: 2015 Cadillac Escalade Models
2015 Chevrolet Tahoe, Suburban
2015 GMC Yukon Models

The following diagnosis might be helpful if the vehicle exhibits the symptom(s) described in this PI.

Condition/Concern

Some customers may comment of a second row outboard seat belt being wet and/or the carpet in the C-Pillar area is wet.

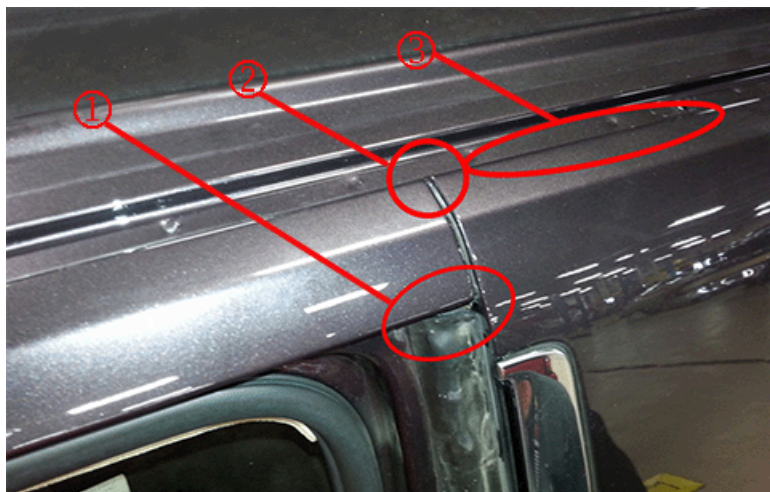
Recommendation/Instructions

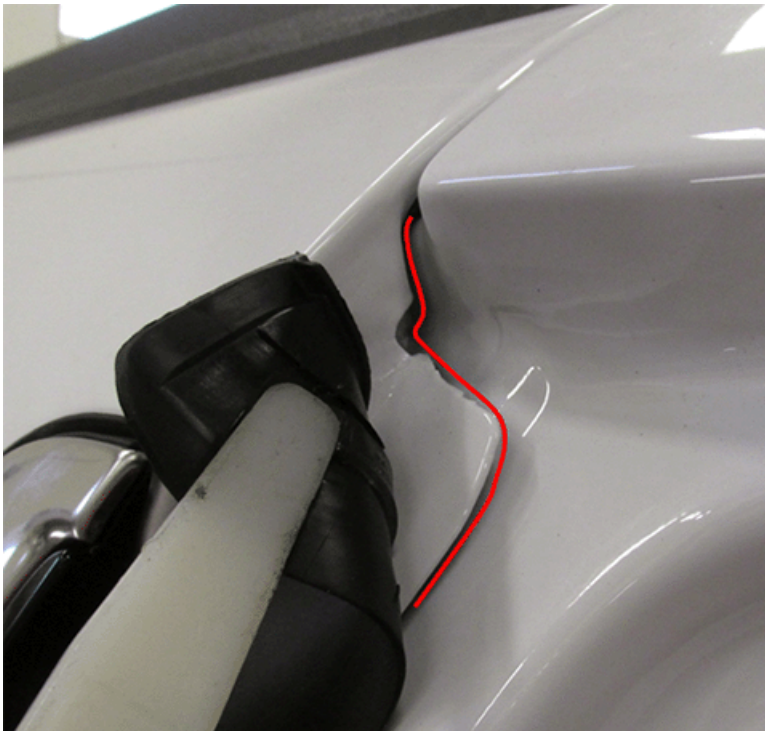
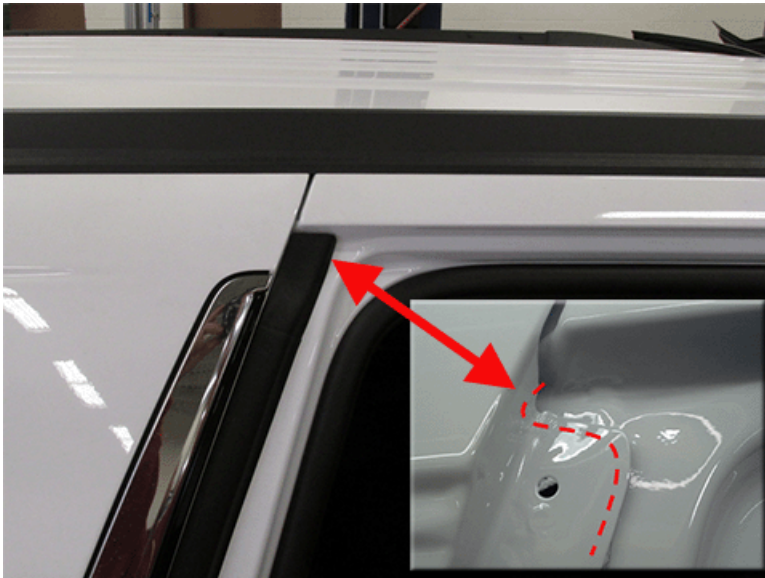
Important: If an outboard seat belt is determined to have become wet or if the customer mentioned that the seat belt became wet from the c-pillar area water leak, the seat belt retractor assembly must be replaced.

Important: Do NOT replace the seat belt retractor assembly until the water leak repair and verification has been performed

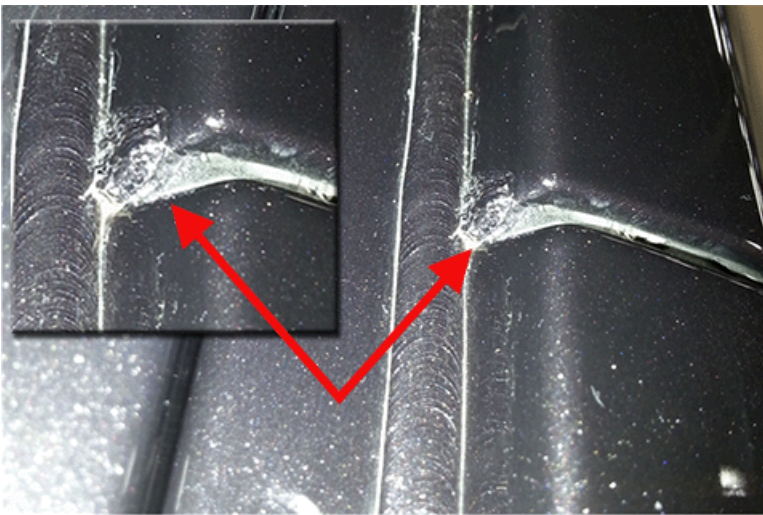
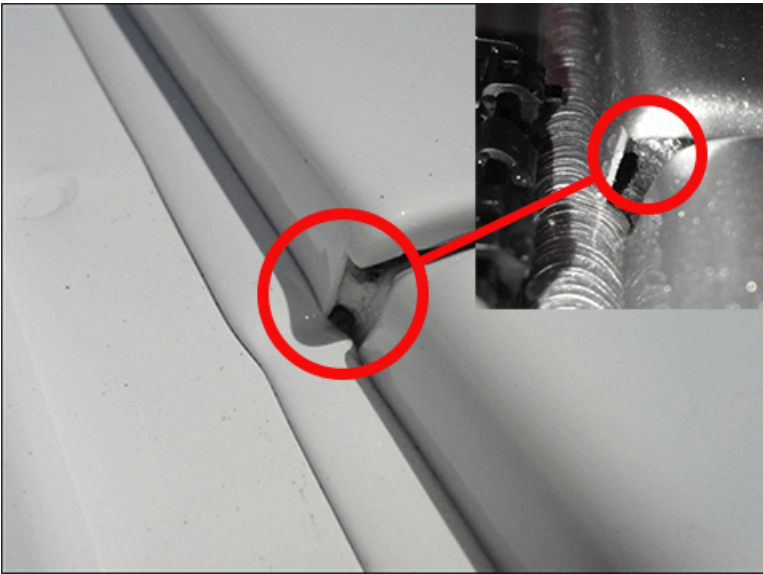
To correct the condition there are 3 areas of body seam sealer that needs to be addressed. Clear flowable seam sealer can be applied to the areas as shown in the pictures below. To allow for proper repair, the luggage carrier roof side rail on the affected side will need to be removed, (with pillar trim being repositioned and the headliner partially lowered for rail access), see SI for removal instructions

1. On the affected side, reposition away the c-pillar / body lock pillar upper trim panel, and partially release the forward portion of the cargo area / quarter lower rear trim panel to allow for inspection of the second row outboard seat belt webbing and retractor.
2. Inspect for water stains on the retractor, webbing, and on the sheet metal near the retractor. Webbing may not show evidence of being wet after it dries.
3. If the seat belt webbing or retractor or sheet metal near the retractor shows signs of having become wet, or if the customer mentioned that the seat belt was wet as a result of a water leak, the seat belt retractor assembly must be replaced. Replace the seat belt retractor assembly following water leak repair and verification testing.





4. With the quarter panel weather strip removed, inspect for clear seam sealer between the c-pillar and rear quarter panel (Area 1).
5. If seam sealer is not present, or if any gaps are found in the sealer, apply clear flowable seam sealer between the c-pillar and rear quarter panel sheet metal as shown per red line in picture.



6. With the roof rail removed on the affected side, inspect existing seam sealer in the area shown; door surround to quarter panel and roof panel (Area 2) for skips or pin holes in the sealer
7. Fill any voids or pins holes found in the existing seam sealer with clear flowable seam sealer



8. With the roof rail removed on the affected side, inspect existing seam sealer in the area shown; quarter panel to roof panel (Area 3) for skips or pull-

away along the outboard edge.

9. Apply clear flowable seam sealer along the rear quarter panel to roof seam as illustrated in picture above.
10. Test to ensure the water leak has been repaired.
11. If it was determined that the seat belt retractor requires replacement, replace the retractor, then reinstall the interior trim.

Parts Information

Part Number	Description	Quantity/Vehicle
P10200 (Obtain from Kent Automotive*)	HIGH-TECH™ CLEAR SEAM SEALER (5 OZ. Tube)	6 Applications Per Tube (Submit in Net Item)
* Contact Kent Automotive at 1-888-937-5368 or www.kent-automotive.com . Do not order from GMCCA.		

Warranty Information

For vehicles repaired under warranty use:

Labor Operation	Description	Body Type	Labor Time
If the seat belt retractor assembly replacement is not necessary, use the following			
2080538*	Repair C Pillar & Roof Rail Seam Sealer, Inspect Seat Belt Retractor, Leak Test	Short Wheel Base	2.5 hr
		Long Wheel Base	4.3 hr
If the seat belt retractor assembly was replaced due to becoming wet, use the following			
2080548*	Repair C Pillar & Roof Rail Seam Sealer, Replace Seat Belt Retractor, Leak Test	Short Wheel Base	3.4 hr
		Long Wheel Base	5.5 hr
* This is an unique labor operation for bulletin use only. This will not be published in the Labor Time Guide.			

Please follow this diagnostic or repair process thoroughly and complete each step. If the condition exhibited is resolved without completing every step, the remaining steps do not need to be performed.

GM bulletins are intended for use by professional technicians, NOT a "do-it-yourselfer". They are written to inform these technicians of conditions that may occur on some vehicles, or to provide information that could assist in the proper service of a vehicle. Properly trained technicians have the equipment, tools, safety instructions, and know-how to do a job properly and safely. If a condition is described, DO NOT assume that the bulletin applies to your vehicle, or that your vehicle will have that condition. See your GM dealer for information on whether your vehicle may benefit from the information.



WE SUPPORT VOLUNTARY TECHNICIAN CERTIFICATION