



# Service Bulletin

## PRELIMINARY INFORMATION

**Subject:** Normal Characteristic - Frame Coating Appearance

**Models:** 2015 Cadillac Escalade Models

2014 Chevrolet Silverado 1500

2015 Chevrolet Suburban, Tahoe

2014 GMC Sierra 1500

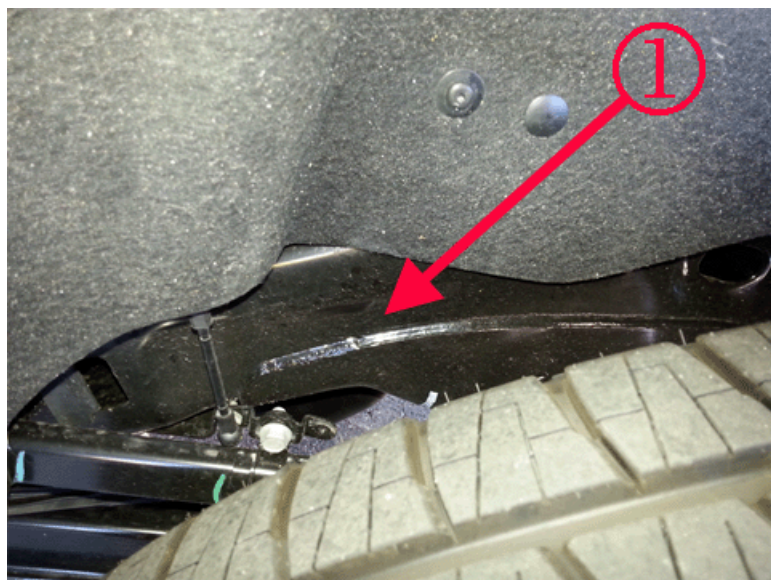
2015 GMC Yukon Models

The following diagnosis might be helpful if the vehicle exhibits the symptom(s) described in this PI.

### Condition/Concern

Some dealers/owners may comment that the frame on their truck has a shiny black appearance, rather than the normal dull black appearance. There was a temporary change to the frame coating on some Arlington and Silao built trucks. These trucks may have a frame painted with e-coat (1), rather than coated with frame wax (2) between the following dates:

- ⇒ Arlington Built SUV's (11th VIN position will be "R") built between May 31 to July 21, 2014
- ⇒ Silao Built Truck's (11th VIN position will be "G") built between May 29 to August 15, 2014





## Recommendation/Instructions

The trucks are built as intended and the e-coated frames meet or exceed GM's specifications for corrosion.

**Note:** If a repair needs to be made to the frame and the black e-coat paint needs to be reapplied, use the latest version of PI0564.

GM bulletins are intended for use by professional technicians, NOT a "do-it-yourselfer". They are written to inform these technicians of conditions that may occur on some vehicles, or to provide information that could assist in the proper service of a vehicle. Properly trained technicians have the equipment, tools, safety instructions, and know-how to do a job properly and safely. If a condition is described, DO NOT assume that the bulletin applies to your vehicle, or that your vehicle will have that condition. See your GM dealer for information on whether your vehicle may benefit from the information.



WE SUPPORT VOLUNTARY TECHNICIAN CERTIFICATION