



# Service Bulletin

## PRELIMINARY INFORMATION

**Subject:** Oil Leak From The Oil Filter

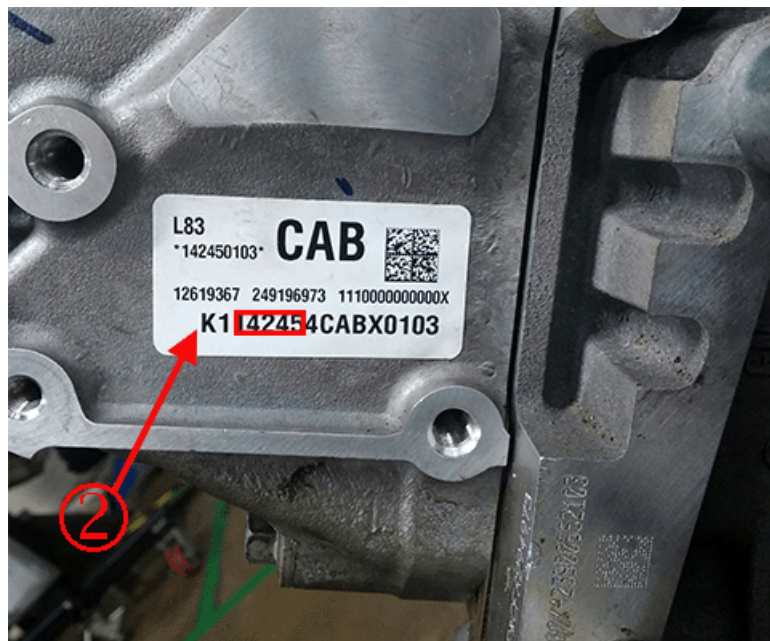
**Models:** 2015 Cadillac Escalade  
2015 Chevrolet Silverado 1500 Suburban, Tahoe  
2015 GMC Sierra 1500 Yukon Yukon XL  
Built with RPO's 5.3L 6.2L L83 L86  
With a engine build of K and between dates 15005 – 15117  
St Catherine's engine plant= K  
The numbers in the box are the date code

The following diagnosis might be helpful if the vehicle exhibits the symptom(s) described in this PI.

### Condition/Concern

Customers may comment on an engine oil leak at the oil filter location of the oil pan.

With a engine build of K and between dates 15005 – 15117



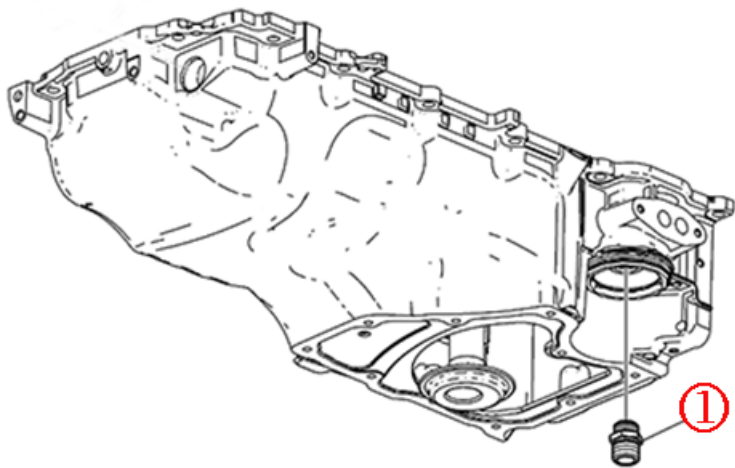
St Catherine's engine plant= K

The numbers in the box are the date code

### Recommendation/Instructions

If a loose oil filter adapter is found to be the cause of the engine oil leak,

Tighten oil filter adapter to 55 Nm or (40 lb ft)



Clean oil pan of any residual oil

**Warranty Information**

For vehicles repaired under warranty use:

Labor Operation	Description	Labor Time
4065570	Oil Filter Adapter Replacement	Use Published Labor Operation Time

Please follow this diagnostic or repair process thoroughly and complete each step. If the condition exhibited is resolved without completing every step, the remaining steps do not need to be performed.

GM bulletins are intended for use by professional technicians, NOT a "do-it-yourselfer". They are written to inform these technicians of conditions that may occur on some vehicles, or to provide information that could assist in the proper service of a vehicle. Properly trained technicians have the equipment, tools, safety instructions, and know-how to do a job properly and safely. If a condition is described, DO NOT assume that the bulletin applies to your vehicle, or that your vehicle will have that condition. See your GM dealer for information on whether your vehicle may benefit from the information.



WE SUPPORT VOLUNTARY TECHNICIAN CERTIFICATION