



Service Bulletin

PRELIMINARY INFORMATION

Subject: Information On Preparation / Washing To Avoid Damaging Bright Aluminum Moldings

Models: 2014 - 2016 Chevrolet Impala (New Body Style)
2013 - 2016 Cadillac ATS, XTS
2011 - 2016 Chevrolet Cruze
2011 - 2016 Buick Regal
2014 - 2016 Cadillac CTS Sedan VIN A

This PI was superseded to update Model Years. Please discard PIC5779E.

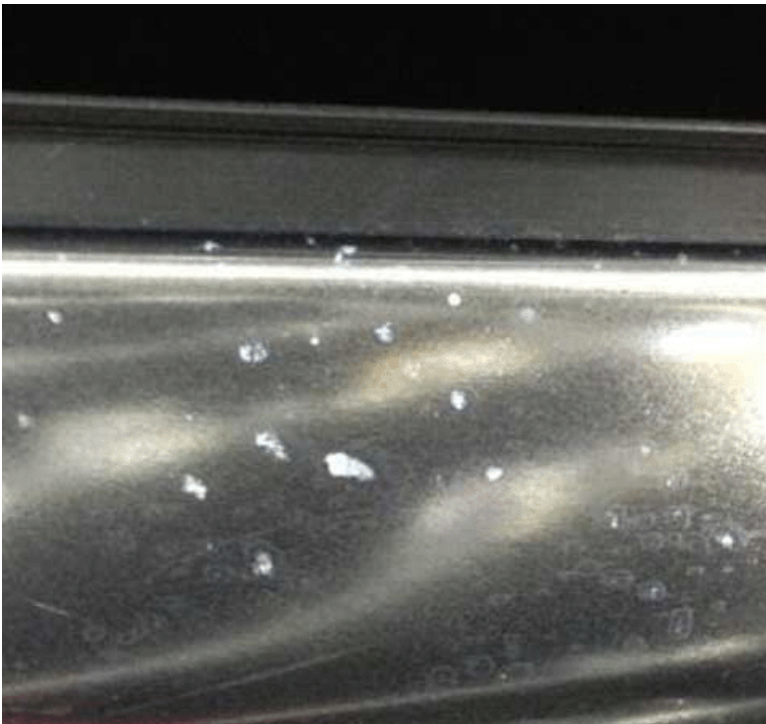
The following diagnosis might be helpful if the vehicle exhibits the symptom(s) described in this PI.

Condition/Concern

Important: Do Not Wash The Vehicle Until This Information Has Been Reviewed. This PI is being made available to advise dealers and customers alike on proper care of Bright Aluminum Moldings.

Recommendation/Instructions

Important: Please ensure this information is reviewed with vehicle owners. In order to avoid damage that may not be covered by your warranty, it is recommended that a non-alkaline solution be used for preparation & washing of the Bright Aluminum Moldings.



If a cleaning solution greater than 11.0 pH is used, the following procedure must be used:

- Prewash the vehicle to bring moldings to room temperature.
- Apply cleaning solution out of the sunlight at room temperature.
- Rinse moldings with clean water within 5 minutes of application of cleaning solution.

ADDITIONAL SI KEYWORDS:

belt chrome damage emblem exterior handle molding spot

Please follow this diagnostic or repair process thoroughly and complete each step. If the condition exhibited is resolved without completing every step, the remaining steps do not need to be performed.

GM bulletins are intended for use by professional technicians, NOT a "do-it-yourselfer". They are written to inform these technicians of conditions that may occur on some vehicles, or to provide information that could assist in the proper service of a vehicle. Properly trained technicians have the equipment, tools, safety instructions, and know-how to do a job properly and safely. If a condition is described, DO NOT assume that the bulletin applies to your vehicle, or that your vehicle will have that condition. See your GM dealer for information on whether your vehicle may benefit from the information.



WE SUPPORT VOLUNTARY TECHNICIAN CERTIFICATION