



# Service Bulletin

## PRELIMINARY INFORMATION

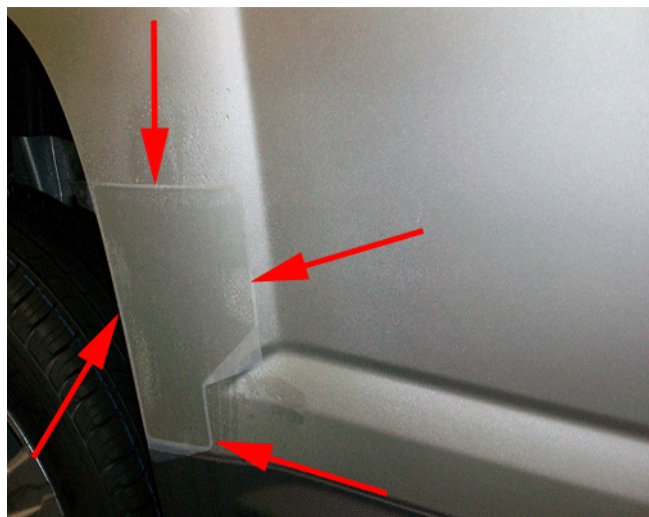
**Subject:** Removal of Rear Door Paint Protection Patch

**Models:** 2014-2016 GMC Terrain  
Vehicles Built After May 14, 2014

**Attention:** This PI also applies to any of the above models that may be Middle East Export vehicles.

*This PI has been revised to add the 2016 Model Year. Please discard PI1244.*

### Condition/Concern



Some customers or dealership personnel may comment that the paint protection patch is missing from the rear door as shown in the illustration above. Recently a change was made that removed the protection patch from production.

### Recommendation/Instructions

**DO NOT** install this patch on vehicles built after the above date as this is a design change.

GM bulletins are intended for use by professional technicians, NOT a "do-it-yourselfer". They are written to inform these technicians of conditions that may occur on some vehicles, or to provide information that could assist in the proper service of a vehicle. Properly trained technicians have the equipment, tools, safety instructions, and know-how to do a job properly and safely. If a condition is described, DO NOT assume that the bulletin applies to your vehicle, or that your vehicle will have that condition. See your GM dealer for information on whether your vehicle may benefit from the information.



WE SUPPORT VOLUNTARY TECHNICIAN CERTIFICATION