



Service Bulletin

PRELIMINARY INFORMATION

Subject: Malfunction Indicator Lamp (MIL) Light On, Reduced Power Mode, DTC Set, Poor Performance/Shifts

Models: 2013-2016 Chevrolet Equinox
2013-2016 GMC Terrain
Equipped with 3.6L Engine (RPO LFX)

Attention: This PI also applies to any of the above models that may be Export vehicles.

This PI has been revised to add the 2016 Model Year. Please discard PI1067.

Condition/Concern

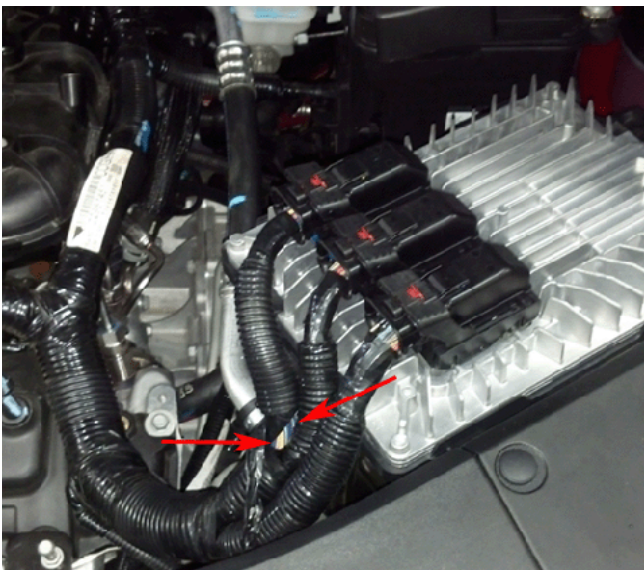
In rare cases, some customers may comment that the malfunction indicator lamp is on, poor performance and reduced power mode on. Technicians may find DTC P0641 or various others set.

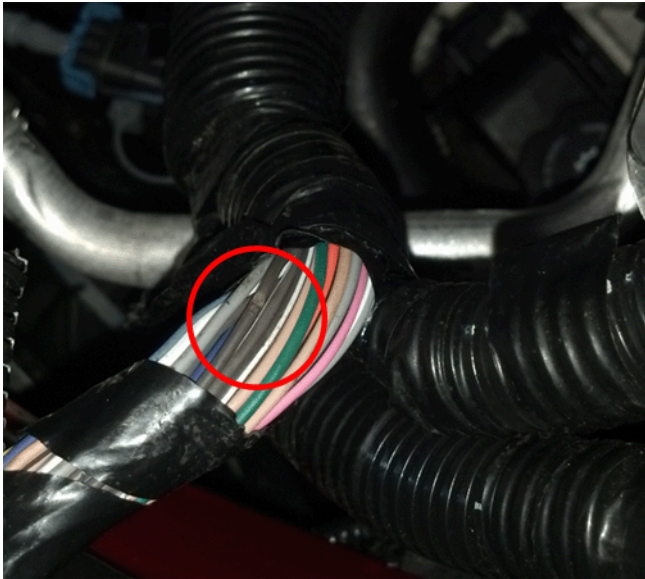
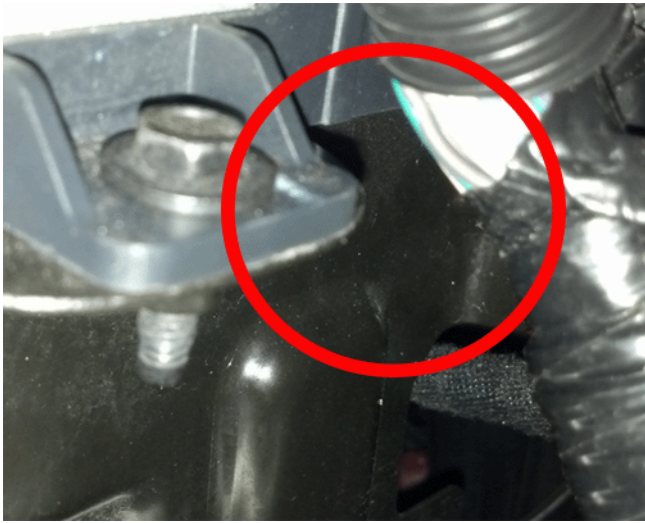
Not all of the effects listed may be experienced. However, the different effects and driver notifications may be caused by one of the wires in the ECM harness being chafed or cut. Due to the cause of the condition, and the positions of the wires in the harness, it is unlikely that more than one circuit will be affected by the condition.

This condition may be caused by the ECM wiring harness rubbing on the ECM bracket. The harness may have chafing or damage to the wires. Contact with the edge of the bracket may result in a rub-through of the wires within that harness.

Recommendation/Instructions

Technicians should inspect the ECM harness (off of Engine Control Module X1 connector) for any damaged wires at the location shown below and repair any damaged wires found. Refer to Wiring Repairs in SI. After the repair is completed, wrap Woven Polyester Electrical Tape (PET) (preferred) or equivalent anti-abrasion tape around the wires on the harness.





If no damage is found, wrap Woven Polyester Electrical Tape (PET) (preferred) or equivalent anti-abrasion tape around the wires on the harness.

Warranty Information

For vehicles repaired under warranty, use:

Labor Operation	Description	Labor Time
5430902	Wire-to-Wire Repair	Use Published Labor Operation Time

GM bulletins are intended for use by professional technicians, NOT a "do-it-yourselfer". They are written to inform these technicians of conditions that may occur on some vehicles, or to provide information that could assist in the proper service of a vehicle. Properly trained technicians have the equipment, tools, safety instructions, and know-how to do a job properly and safely. If a condition is described, DO NOT assume that the bulletin applies to your vehicle, or that your vehicle will have that condition. See your GM dealer for information on whether your vehicle may benefit from the information.



WE SUPPORT VOLUNTARY TECHNICIAN CERTIFICATION