



Service Bulletin

PRELIMINARY INFORMATION

Subject: Squeak Noise Heard When Operating Clutch Pedal

Models: 2012-2015 Chevrolet Cruze
Equipped with Manual Transmission

This PI has been revised to provide the repair information. Please discard PI1333.

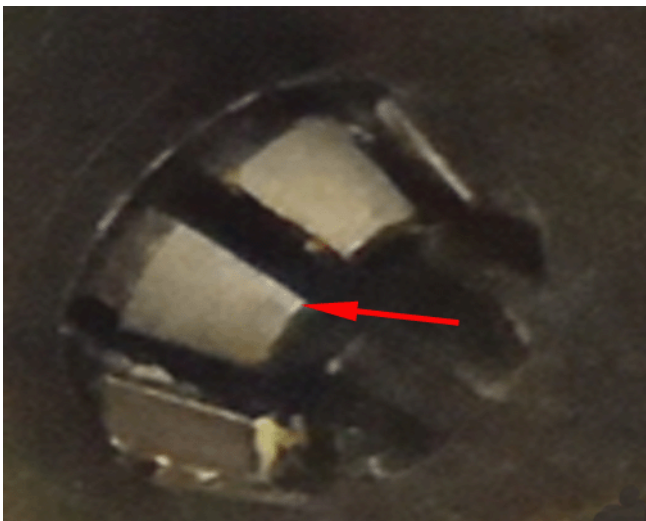
Condition/Concern

Some customers may comment on a squeak noise when operating the clutch pedal.

This condition may be due to incompatibility between the plastic pivot pin and the plastic clutch pedal.

Recommendation/Instructions

Replace the clutch pedal pivot pin and retaining clip with the part numbers listed, following the repair procedure below:



1. Release the clutch pedal pivot pin by squeezing the finger locks.

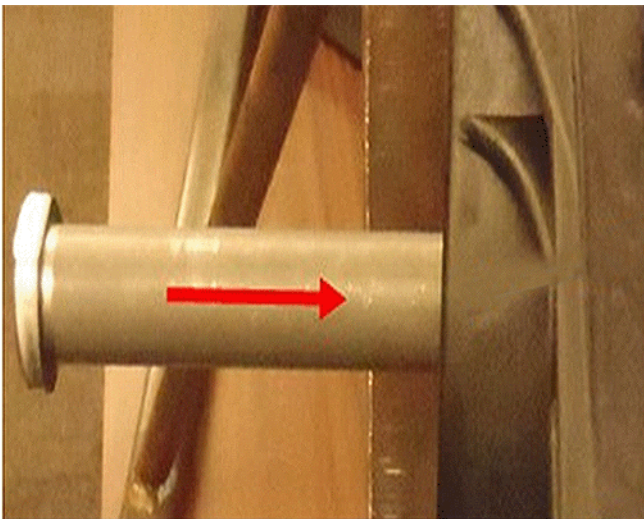


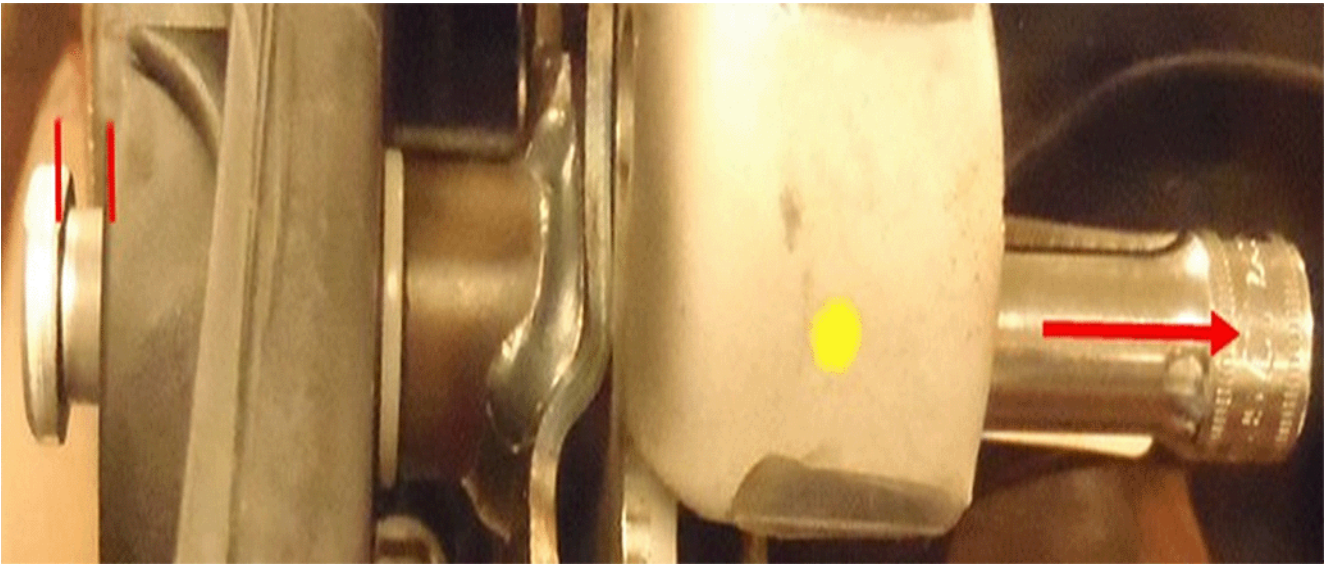
2. Using an 8 mm socket, push against the ramps of the fingers locks and continue inserting the socket into the hole until the pivot pin is pushed out and discard.

Important: Retain the 8 mm socket in the hole to position the clutch pedal until the new pin is ready to be installed.

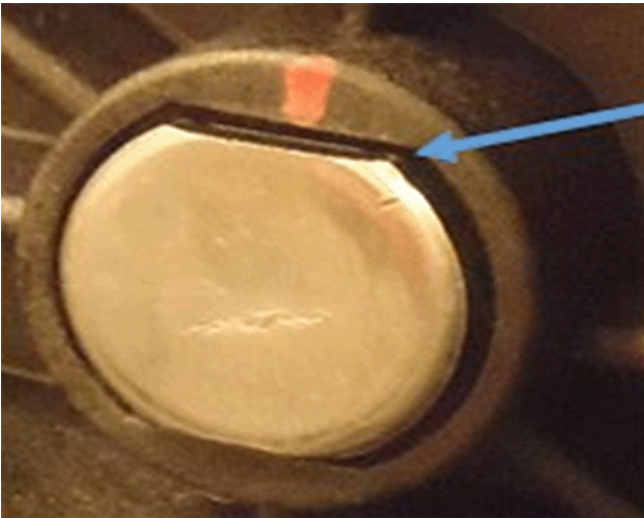
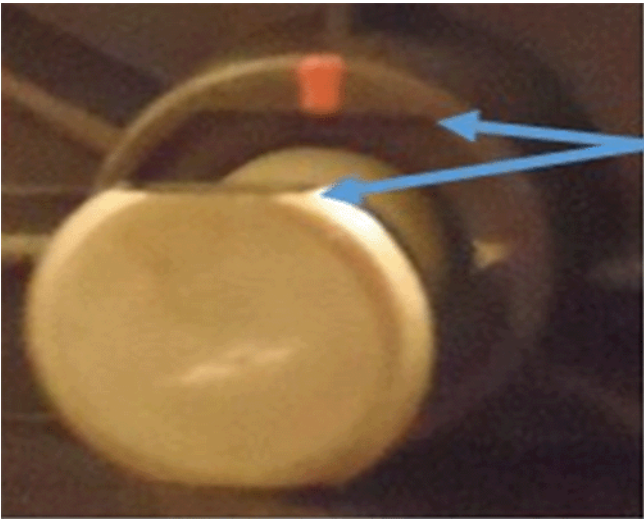


3. Apply a thin coating of GM Super Lube, P/N 12346241 (in Canada, P/N 10953474) or equivalent, on the entire length of the new pivot pin.

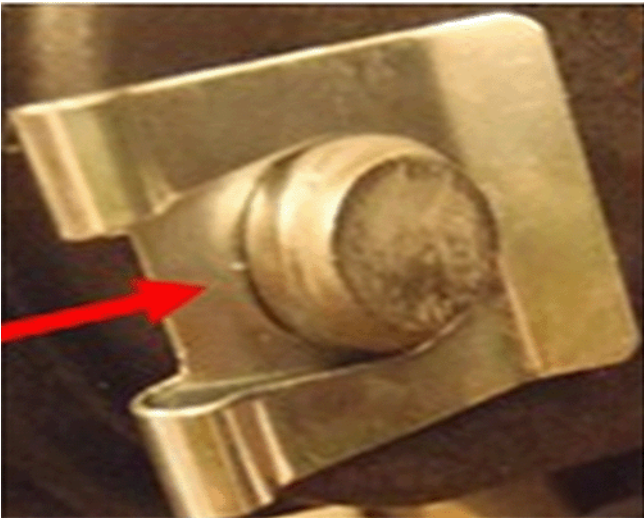
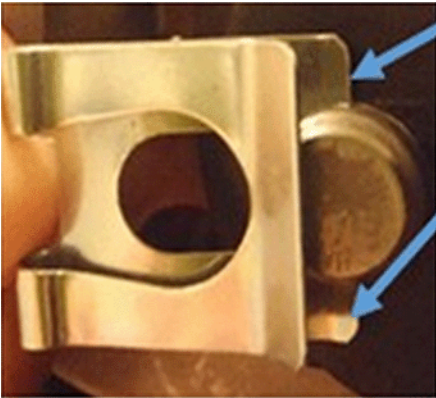




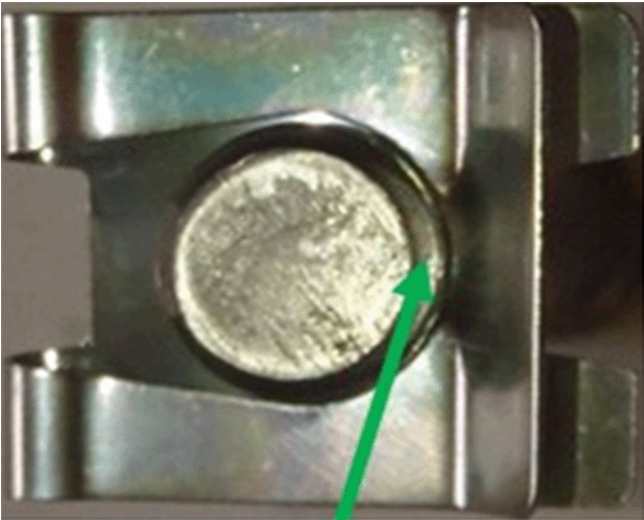
4. Insert the new pivot pin in the hole and push until the socket is out and the head of the pivot pin is 10 mm from being seated.



5. Align the flats on the pivot pin with the flats on the housing boss, then push the pivot pin inward until fully seated.



6. Insert the two fingers on the retaining clip into the groove on the new pivot pin and push until fully seated.



Note: Ensure that the retaining clip is completely engaged over the new pivot pin.

Parts Information

Part Number	Description
23295876	PIN-BRK PED PIV
23295877	RETAINER-BRK PED PIV PIN

Warranty Information

For vehicles repaired under the Bumper-to-Bumper coverage (Canada Base Warranty coverage), use the following labor operation. Reference the Applicable Warranties section of Investigate Vehicle History (IVH) for coverage information.

Labor Operation	Description	Labor Time
8480238*	Clutch Pedal Pin and Retaining Clip Replacement	1.0 hr
*This is a unique Labor Operation for Bulletin use only. It will not be published in the Labor Time Guide.		

GM bulletins are intended for use by professional technicians, NOT a "do-it-yourselfer". They are written to inform these technicians of conditions that may occur on some vehicles, or to provide information that could assist in the proper service of a vehicle. Properly trained technicians have the equipment, tools, safety instructions, and know-how to do a job properly and safely. If a condition is described, DO NOT assume that the bulletin applies to your vehicle, or that your vehicle will have that condition. See your GM dealer for information on whether your vehicle may benefit from the information.



WE SUPPORT VOLUNTARY TECHNICIAN CERTIFICATION