



Service Bulletin

PRELIMINARY INFORMATION

Subject: Gap Between Center Pillar Upper Trim Panel and Door Seal

Models: 2014 Cadillac CTS Sedan (VIN A)
Built Prior to May 1, 2014

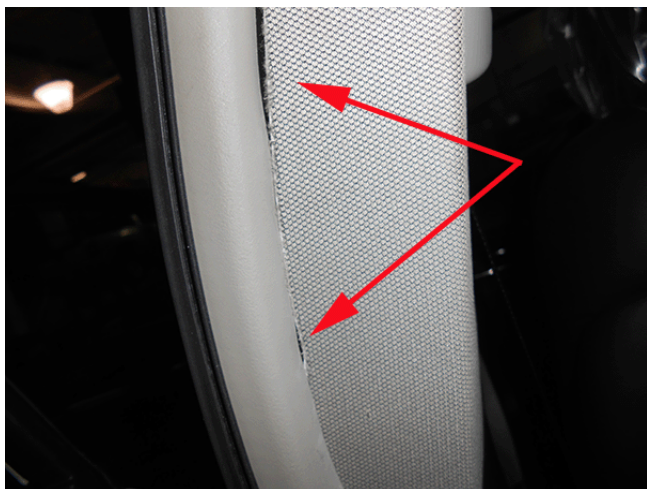
Attention: This PI also applies to any of the above models that may be Export vehicles.

Condition/Concern

Some customers may comment that there is gap between the center pillar upper trim panel and the door seal.

This condition may exist because the center pillar upper trim panel may flex, allowing a gap to the door seal.

Recommendation/Instructions



If this gap is present as illustrated above, there has been a redesigned trim panel released to correct the gap. Replace only the affected center pillar upper trim with the redesigned trim panel. Refer to the Center Pillar Upper Trim Panel Replacement in SI.

Parts Information

Part Number	Description
23231206 (right side)	Panel, Black
23231208 (right side)	Panel, Cashmere

23231207 (right side)	Panel, Titanium
23231210 (left side)	Panel, Black
23231212 (left side)	Panel, Cashmere
23231211 (left side)	Panel, Titanium

Warranty Information

For vehicles repaired under the Bumper-to-Bumper coverage (Canada Base Warranty coverage), use the following labor operation. Reference the Applicable Warranties section of Investigate Vehicle History (IVH) for coverage information.

Labor Operation	Description	Labor Time
1080278*	Center Pillar Upper Trim Panel Replacement (one side)	0.4 hr
Add	Replace Both Side Upper Trim Panels	0.2 hr
*This is a unique Labor Operation for Bulletin use only. It will not be published in the Labor Time Guide.		

GM bulletins are intended for use by professional technicians, NOT a "do-it-yourselfer". They are written to inform these technicians of conditions that may occur on some vehicles, or to provide information that could assist in the proper service of a vehicle. Properly trained technicians have the equipment, tools, safety instructions, and know-how to do a job properly and safely. If a condition is described, DO NOT assume that the bulletin applies to your vehicle, or that your vehicle will have that condition. See your GM dealer for information on whether your vehicle may benefit from the information.



WE SUPPORT VOLUNTARY TECHNICIAN CERTIFICATION