



Service Bulletin

PRELIMINARY INFORMATION

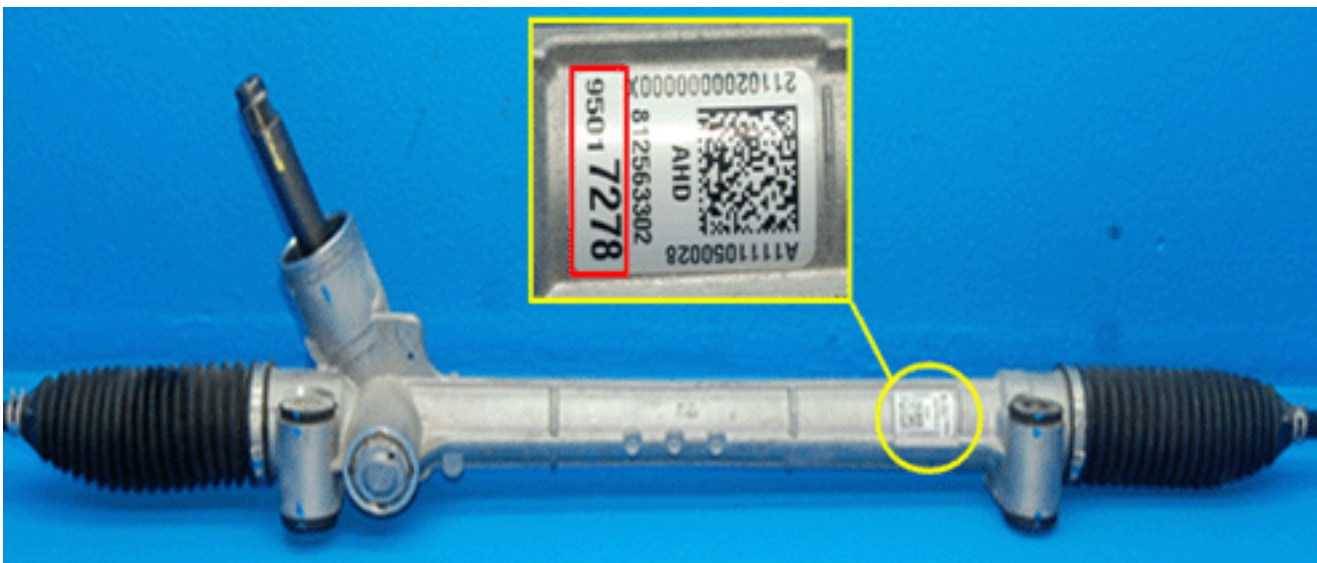
Subject: Information on Electronic Power Steering (EPS) Calibrations for Steering Gear

Models: 2013-2014 Buick Encore
2012-2014 Chevrolet Sonic
2013-2014 Chevrolet Trax

This PI has been revised to update the Calibration Table. Please discard PI1350.

New steering gears have been released recently and new EPS calibrations should be applied on it. Old steering gears should be combined with old EPS calibrations. For this reason, matching the steering gear with the EPS calibration is very important. Please follow the procedures below for preventing mismatching between hardware and software.

Replacing Steering Column



1. Lift the vehicle using a hoist and check the part number of the steering gear that is located on the area shown above .
Note: This steering gear part number will be used to define steering gear (old or new) calibration ID.
2. Reprogram the EPS. Refer to Power Steering Control Module Programming and Setup below.
Note: Adding the steering gear part number on the SPS web page will allow the operation software and calibration part number to display automatically on the page.
3. Confirm and complete EPS reprogramming by determining the operation software part number and calibration part number using the Calibration table. If the operation software part number and calibration part number are not correct, please verify the steering gear part number and try again. If the operation software part number and calibration part number are correct, reprogram the power steering control module.

Replacing Steering Gear

Power Steering Control Module Programming and Setup

1. Connect an MDI to the vehicle and to the Techline PC.
 2. Ensure that all power consuming devices are turned OFF on the vehicle.
 3. From the TIS Home Page select "Service Programming System (SPS)" and follow the screen instructions.
 4. Select "Start SPS" application and follow the on-screen instructions.
 5. Select: "J2534 MDI" and "Reprogram ECU" then select "Next."
 6. Follow the On Screen Instructions then select "Next."
 7. Select Validate/Select Vehicle Data and click Next button.
 8. Check VIN and click Next button.
 9. Select SPS items.
 - 9.1. Select Controller: EPS.
 - 9.2. Select Function/Sequence: Programming.
 - 9.3. Select Programming Type: Normal.
 10. Select Gear Part number and click Next button.
 11. Confirm the software number and Click "Next."
 12. When programming is completed, clear any DTCs.
-

GM bulletins are intended for use by professional technicians, NOT a "do-it-yourselfer". They are written to inform these technicians of conditions that may occur on some vehicles, or to provide information that could assist in the proper service of a vehicle. Properly trained technicians have the equipment, tools, safety instructions, and know-how to do a job properly and safely. If a condition is described, DO NOT assume that the bulletin applies to your vehicle, or that your vehicle will have that condition. See your GM dealer for information on whether your vehicle may benefit from the information.



WE SUPPORT VOLUNTARY TECHNICIAN CERTIFICATION