



Service Bulletin

PRELIMINARY INFORMATION

Subject: Convertible Top Difficult to Latch Closed

Models: 2013-2015 Chevrolet Camaro Convertible

Attention: This PI also applies to any of the above models that may be Export vehicles.

This PI has been revised to add the 2015 Model Year. Please discard PI0997.

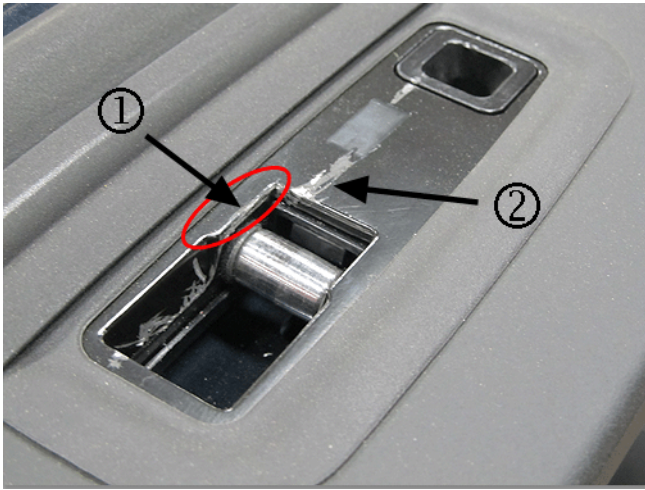
Condition/Concern

Some customers may comment that the convertible top is difficult to latch closed at the windshield header.

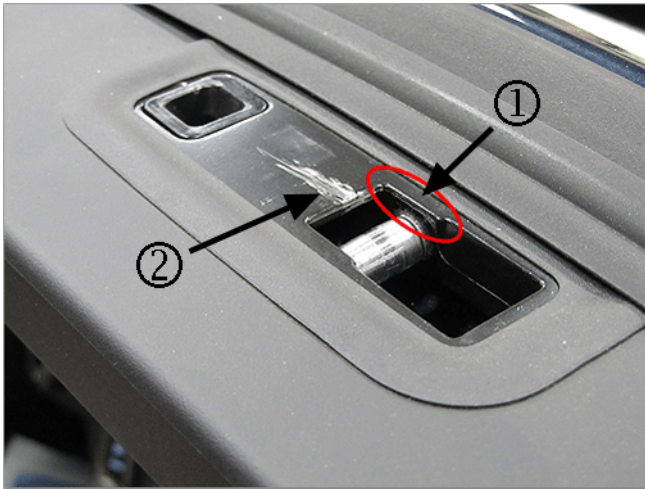
The cause of this condition may be incorrect positioning of the folding top in relation to the vehicle body. The graphics below show some examples of visual indicators of this top mis-alignment.



Commonly, when not latched at the header, the top will still show a uniform gap across the top of the windshield.



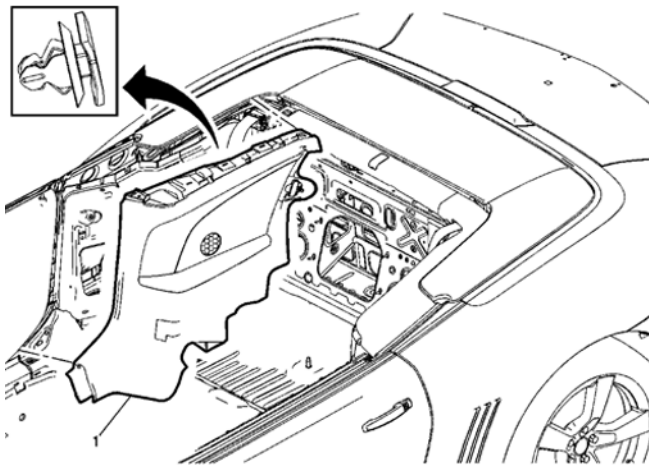
This driver side front striker shows latch impact marks at the forward edge (1) and the latch hook wear marks (2) too far forward.



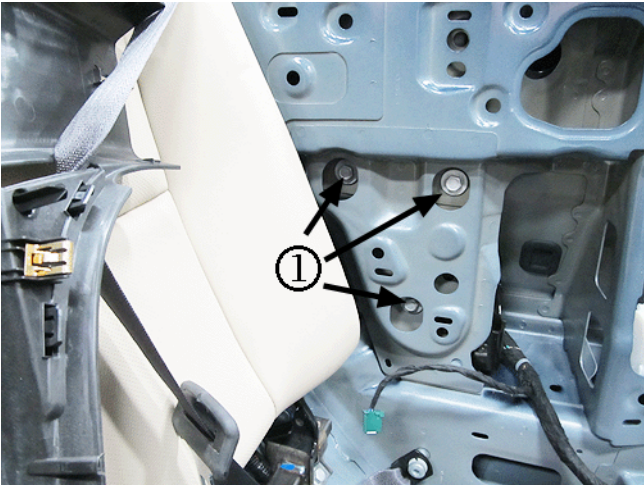
This passenger side front striker shows no indication of latch impact marks (1) and the latch hook wear marks (2) are more centered to the opening.

Recommendation/Instructions

Adjust the body side folding top mounting brackets following the steps below:



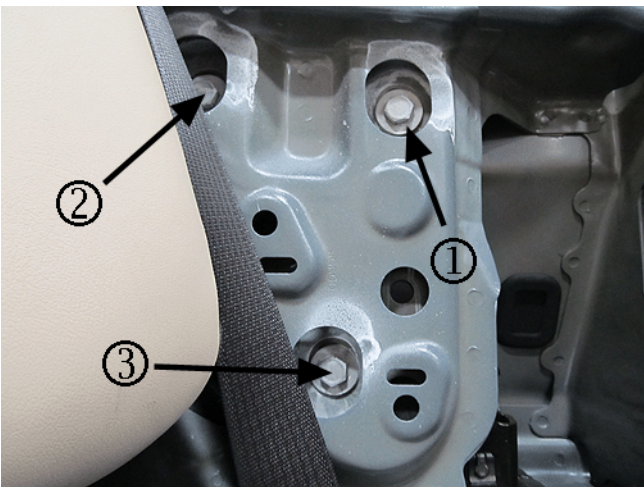
1. Remove the rear seat cushion, the left/right quarter trim panels and related trim. Refer to Quarter Trim Panel Replacement (Convertible) in SI.



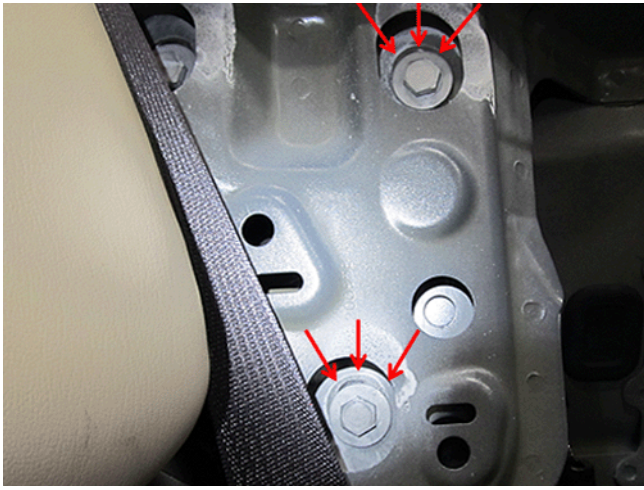
2. Verify the location of the body side mounting bracket retaining fasteners (1), three per side.



3. Mark the original position of the left and right mounting bracket fasteners by applying leak trace powder, or a suitable equivalent, to all six fastener locations.
4. Fully close and latch the convertible top.
5. Fully close all side door and quarter window glass.



6. Starting on the driver side, loosen (**but don't remove**) the mounting bracket fasteners following the sequence noted below:
 - 6.1. Loosen the upper forward fastener (1) a minimum of one full revolution.
 - 6.2. Loosen the upper rear fastener (2) a minimum of one full revolution.
 - 6.3. Loosen the lower fastener (3) a minimum of one full revolution. Upon losing this third fastener, the mounting bracket should make a slight visual/audible shift and settle to a new position. The graphic below shows an example of the position shift of the mounting bracket.



6.4. Re-tighten the three fasteners, reversing the loosening sequence by starting with the lower fastener.

Tighten: Tighten the fastener to 55 Y (41 lb ft).

6.5. Repeat the same loosening sequence on the passenger side mounting bracket. That side bracket may also make a slight shift to a new position.

6.6. Tighten the three fasteners on the passenger side, reversing the loosening sequence by starting with the lower fastener.

Tighten: Tighten the fastener to 55 Y (41 lb ft).

7. Unlatch the top at the windshield header, then do several latch/unlatch trials to verify an improved latching condition.

8. Reinstall the rear seat cushion, the left/right quarter trim panels and related trim. Refer to Quarter Trim Panel Replacement (Convertible) in SI.

Warranty Information

For vehicles repaired under warranty, use:

| Labor Operation | Description | Labor Time |
|--|--|------------|
| 6080038* | Adjust Convertible Top Body Side Mounting Brackets | 0.9 hr |
| *This is a unique Labor Operation for Bulletin use only. It will not be published in the Labor Time Guide. | | |

GM bulletins are intended for use by professional technicians, NOT a "do-it-yourselfer". They are written to inform these technicians of conditions that may occur on some vehicles, or to provide information that could assist in the proper service of a vehicle. Properly trained technicians have the equipment, tools, safety instructions, and know-how to do a job properly and safely. If a condition is described, DO NOT assume that the bulletin applies to your vehicle, or that your vehicle will have that condition. See your GM dealer for information on whether your vehicle may benefit from the information.



WE SUPPORT VOLUNTARY TECHNICIAN CERTIFICATION