

MIL "ON" DTC P2111 and/or P0A0F After Cold Soak

Service Category Vehicle Interior

Section Meter/Gauge/Display

Market USA

Lexus Supports
ASE Certification 

Applicability

YEAR(S)	MODEL(S)	ADDITIONAL INFORMATION
2010 – 2015	RX450H	

Introduction

Some 2010 – 2015 model year RX 450h vehicles may exhibit a condition of MIL "ON" with DTC(s) P2111 and/or P0A0F after a cold soak. Follow the Repair Procedure in this bulletin to address this condition.

Warranty Information

OP CODE	DESCRIPTION	TIME	OPF	T1	T2
EG1507	R & R Intake Surge Tank and Reprogram ECM*	3.0	17190-31130 89661-48E20 89661-48E21 89661-48F80 89661-48Q70	99	99
EG1508	Reprogram ECM*	0.8	89661-48E20 89661-48E21 89661-48F80 89661-48Q70	01	99

* Based on the Production Change Information section, choose ONLY 1 OP CODE.

APPLICABLE WARRANTY

- This repair is covered under the Lexus Federal Emissions Warranty. This warranty is in effect for 96 months or 80,000 miles, whichever occurs first, from the vehicle's in-service date.
- Warranty application is limited to occurrence of the specified condition described in this bulletin.

MIL "ON" DTC P2111 and/or P0A0F After Cold Soak

Production Change Information

This bulletin applies to:

- 2010 – 2013 model year RX 450h vehicles produced **BEFORE** the Production Change Effective VINs shown below. (These vehicles will require a NEW Intake Surge Tank and a reflash.)

MODEL	DRIVETRAIN	PRODUCTION CHANGE EFFECTIVE VIN
RX 450h	2WD	JTJZB1BA#D2009277
		JTJZB1BA#D2413187
	AWD	JTJBC1BA#D2065921
		JTJBC1BA#D2451832

- 2013 – 2015 model year RX 450h vehicles built **AFTER** the Production Change Effective VINs shown above and **BEFORE** the Production Change Effective VINs shown below. (These vehicles will **ONLY** require a reflash.)

MODEL	PLANT	DRIVETRAIN	PRODUCTION CHANGE EFFECTIVE VIN
RX 450h	TMMC	2WD	2T2ZK1BA#FC192763
		AWD	2T2BC1BA#FC008973
	TMK	2WD	JTJZB1BA#F2415903
			JTJZB1BA#F2415912
		AWD	JTJBC1BA#F2468063

NOTE

Vehicles produced after these VIN breaks will already have the NEW software AND the NEW hardware installed.

Required Tools & Equipment

SPECIAL SERVICE TOOLS (SST)	PART NUMBER	QTY
GR8 Battery Diagnostic Station*	00002-MCGR8	1

NOTE

Additional SSTs may be ordered by calling 1-800-933-8335.

* Essential SST.

MIL "ON" DTC P2111 and/or P0A0F After Cold Soak

Required Tools & Equipment (Continued)

REQUIRED EQUIPMENT	SUPPLIER	PART NUMBER	QTY
Techstream 2.0*	ADE	TS2UNIT	1
Techstream Lite		TSLITEPDLR01	

NOTE

- Only ONE of the Techstream units listed above is required.
- Software version 10.10.018 or later is required.
- Additional Techstream units may be ordered by calling Approved Dealer Equipment (ADE) at 1-800-368-6787.
- The Diagnostic Tester is NOT recommended for flash reprogramming. Please use Techstream or an approved J2534 interface to perform flash reprogramming updates. Visit techinfo.toyota.com for more information regarding J2534 reprogramming.



Parts Information

PART NUMBER		PART NAME	QTY
PREVIOUS	NEW		
17190-31130	17190-31250	Tank Assy, Intake Air Surge 1	1*
25627-31030		Gasket, EGR Valve 1	1*
25629-31030		Gasket, EGR Pipe, No. 2	1*
89661-48E20 89661-48E21	89661-48E22	Engine Control Unit	-
89661-48F80	89661-48F81		
89661-48Q70	89661-48Q71		
00451-00001-LBL		Authorized modification label	1

* Intake air surge tank assembly and related gaskets only to be replaced on vehicles built **BEFORE** the Production Change Effective VIN shown above.

NOTE

- The ECU should NOT be replaced as part of this Repair Procedure.
- Authorized Modification Labels may be ordered in packages of 25 from the Materials Distribution Center (MDC) through *Dealer Daily – Dealer Support Materials Orders*.

MIL "ON" DTC P2111 and/or P0A0F After Cold Soak

Calibration Information

MODEL	ECU	MODEL YEAR	CALIBRATION ID	
			PREVIOUS	NEW
RX 450h	Engine ECM	2010	348D4000	348D4200
			348D4100	
			348N2000	
		2011 – 2013	34887000	34887100
			348N5000	
		2014 – 2015	348Q7000	348Q7100

Repair Procedure

1. Confirm if any of the following DTCs are present:

- P2111 – Throttle Actuator Control System – Stuck Open.
- P0A0F – Engine Failed to Start.

If other DTCs are present, this bulletin does NOT apply. Continue diagnosis per Repair Manual procedures.

2. Check the vehicle's VIN.

- If the vehicle's VIN falls **BEFORE** the Production Change Effective VINs, continue to step 3.
- If the vehicle's VIN falls **AFTER** the Production Change Effective VINs, continue to step 4.

3. Remove and replace the intake air surge tank assembly with the updated part.

Refer to the Technical Information System (TIS), applicable model and model year Repair Manual:

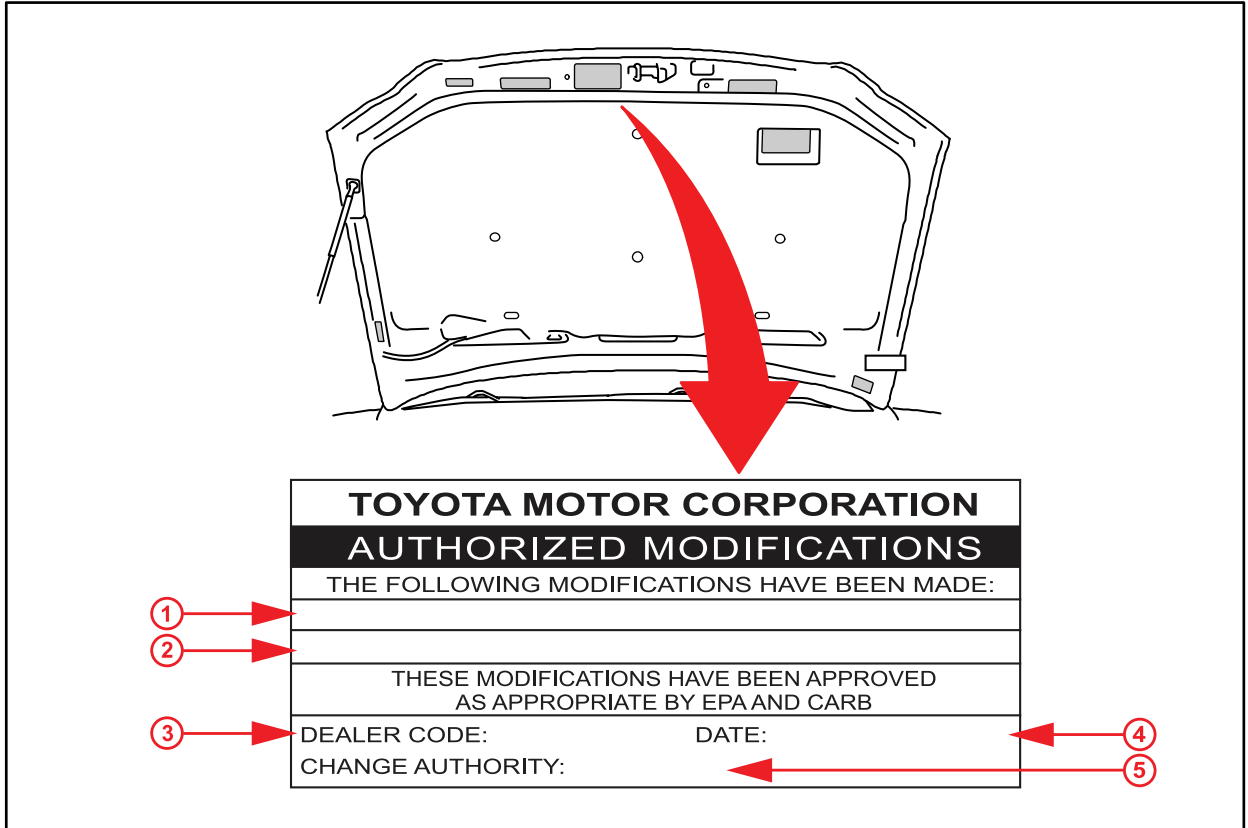
- [2010 \(3/2009 – 8/2009\)](#) / [2010 \(8/2009 – \)](#) / [2011](#) / [2012](#) / [2013](#) RX 450h: *Engine/Hybrid System – Intake/Exhaust – “2GR-FXE Intake/Exhaust: Intake Manifold: Removal”*
- [2010 \(3/2009 – 8/2009\)](#) / [2010 \(8/2009 – \)](#) / [2011](#) / [2012](#) / [2013](#) RX 450h: *Engine/Hybrid System – Intake/Exhaust – “2GR-FXE Intake/Exhaust: Intake Manifold: Installation”*

MIL "ON" DTC P2111 and/or P0A0F After Cold Soak

Repair Procedure (Continued)

4. Check for the Authorized Modifications Label affixed to the vehicle in the location shown in Figure 1. Confirm if the ECM (PCM) calibrations have been updated. If the calibration IDs are NOT the latest calibrations — go to step 5.

Figure 1. Location of Authorized Modifications Label on 2010 – 2015 RX 450h



1	Replacement ECM (PCM) Part Number (i.e., 89661-48Q71)
2	New Calibration ID(s) (i.e., 348Q7100)
3	Dealer Code

4	Date Completed
5	This SB Number

MIL "ON" DTC P2111 and/or P0A0F After Cold Soak

Repair Procedure (Continued)

- Flash Reprogram the ECM (PCM).

NOTE

- The GR8 Battery Diagnostic Station **MUST** be used in Power Supply Mode to maintain battery voltage at 13.5 volts while flash reprogramming the vehicle.
- For details on how to use the GR8 Battery Diagnostic Station, refer to the [GR8 Instruction Manual](#) located on the Technical Information System (TIS), *Diagnostics – Tools & Equipment – Battery Diagnostics*.

Follow the procedures outlined in Service Bulletin No. [L-SB-0021-14](#), "Techstream ECU Flash Reprogramming Procedure," and flash the ECM (PCM) with the NEW calibration file update.

- Start the engine and warm it up to normal operating temperature before test driving.
- Test drive the vehicle to confirm proper vehicle operation (and proper laser cruise control operation, if equipped).
- Install the Authorized Modifications Label.
 - Using a permanent marker, enter the following information on the label:
 - ECM part number [*Refer to the **Parts Information** section for the **NEW PART NUMBER***]
 - Calibration ID(s) [*Refer to the **Calibration Information** section for the **NEW CALIBRATION ID***]
 - Dealer Code
 - Repair Date
 - Change Authority [***This bulletin number***]
 - Affix the Authorized Modifications Label to the vehicle at the location shown in Figure 1. The Authorized Modifications Label is available through the MDC, P/N 00451-00001-LBL.
- Calibration update is complete.

NOTE

The effect of the NEW calibration may become more apparent after several days of driving as the ECM (PCM) "learned values" are re-established from the customer's driving.