

MIL "ON" DTC P2111 and/or P0A0F After Cold Soak

Service Category Vehicle Interior

Section Meter/Gauge/Display

Market USA

Toyota Supports
 ASE Certification 

Applicability

YEAR(S)	MODEL(S)	ADDITIONAL INFORMATION
2011 – 2015	Highlander HV	

Introduction

Some 2011 – 2015 model year Highlander HV vehicles may exhibit a condition of MIL "ON" with DTC(s) P2111 and/or P0A0F after a cold soak. Follow the Repair Procedure in this bulletin to address this condition.

Production Change Information

This bulletin applies to:

- 2011 – 2013 model year Highlander HV vehicles produced **BEFORE** the Production Change Effective VIN shown below. (These vehicles will require a NEW Intake Surge Tank and a reflash.)

MODEL	PRODUCTION CHANGE EFFECTIVE VIN
Highlander HV	JTEBC3EH#D2018016

- 2013 – 2015 model year Highlander HV vehicles built **AFTER** the Production Change Effective VINs shown above and **BEFORE** the Production Change Effective VINs shown below. (These vehicles will ONLY require a reflash.)

MODEL	PRODUCTION CHANGE EFFECTIVE VIN
Highlander HV	5TDDCRFH#FS010286
	5TDJCRFH#FS010286
	5TDBCRFH#FS010286

NOTE

Vehicles built after these VIN breaks are post counter-measure and will NOT benefit from updated software or hardware.

MIL "ON" DTC P2111 and/or P0A0F After Cold Soak

Warranty Information

OP CODE	DESCRIPTION	TIME	OPF	T1	T2
EG1507	R & R Intake Surge Tank and Reprogram ECM*	3.0	17190-31130 89661-0E500 89661-48N80 89661-48G20	99	99
EG1508	Reprogram ECM*	0.8	89661-0E500 89661-48N80 89661-48G20	01	99

* Based on the Production Change Information section, choose ONLY 1 OP CODE.

APPLICABLE WARRANTY

- This repair is covered under the Toyota Federal Emission Warranty. This warranty is in effect for 96 months or 80,000 miles, whichever occurs first, from the vehicle's in-service date.
- Warranty application is limited to occurrence of the specified condition described in this bulletin.

Parts Information

PART NUMBER		PART NAME	QTY
PREVIOUS	NEW		
17190-31130	17190-31250	Tank Assy, Intake Air Surge 1	1*
25627-31030		Gasket, EGR Valve 1	1*
25629-31030		Gasket, EGR Pipe, No. 2	1*
89661-0E500 89661-48N80 89661-48G20	89661-0E501 89661-48N81 89661-48G21	Engine Control Unit	–
00451-00001-LBL		Authorized modification label	1

* Intake air surge tank assembly and related gaskets only to be replaced on vehicles built **BEFORE** the Production Change Effective VIN shown above.

NOTE

- The ECM should NOT be replaced as part of this Repair Procedure.
- Authorized Modification Labels may be ordered in packages of 25 from the Materials Distribution Center (MDC) through *Dealer Daily – Dealer Support Materials Orders*.

MIL "ON" DTC P2111 and/or P0A0F After Cold Soak

Required Tools & Equipment

REQUIRED EQUIPMENT	SUPPLIER	PART NUMBER	QTY
Techstream 2.0*	ADE	TS2UNIT	1
Techstream Lite		TSLITEPDLR01	

NOTE

- Only ONE of the Techstream units listed above is required.
- Software version 10.10.018 or later is required.
- Additional Techstream units may be ordered by calling Approved Dealer Equipment (ADE) at 1-800-368-6787.
- The Diagnostic Tester is NOT recommended for flash reprogramming. Please use Techstream or an approved J2534 interface to perform flash reprogramming updates. Visit techinfo.toyota.com for more information regarding J2534 reprogramming.



SPECIAL SERVICE TOOLS (SST)	PART NUMBER	QTY
GR8 Battery Diagnostic Station*	00002-MCGR8	1

NOTE

Additional SSTs may be ordered by calling 1-800-933-8335.

* Essential SST.

Calibration Information

MODEL	MODEL YEAR	CALIBRATION ID	
		PREVIOUS	NEW
Highlander HV	2011 – 2012	34878000 348N8000	34878100
	2013	348N1000	348N1100
	2014 – 2015	30E26000	30E26100

MIL "ON" DTC P2111 and/or P0A0F After Cold Soak

Repair Procedure

1. Confirm if any of the following DTCs are present:

- P2111 – Throttle Actuator Control System – Stuck Open.
- P0A0F – Engine Failed to Start.

If other DTCs are present, this bulletin does NOT apply. Continue diagnosis per Repair Manual procedures.

2. Check the vehicle's VIN.

- If the vehicle's VIN falls **BEFORE** the Production Change Effective VIN, continue to step 3.
- If the vehicle's VIN falls **AFTER** the Production Change Effective VIN, continue to step 4.

3. Remove and replace the intake air surge tank assembly with the updated part.

Refer to the Technical Information System (TIS), applicable model and model year Repair Manual:

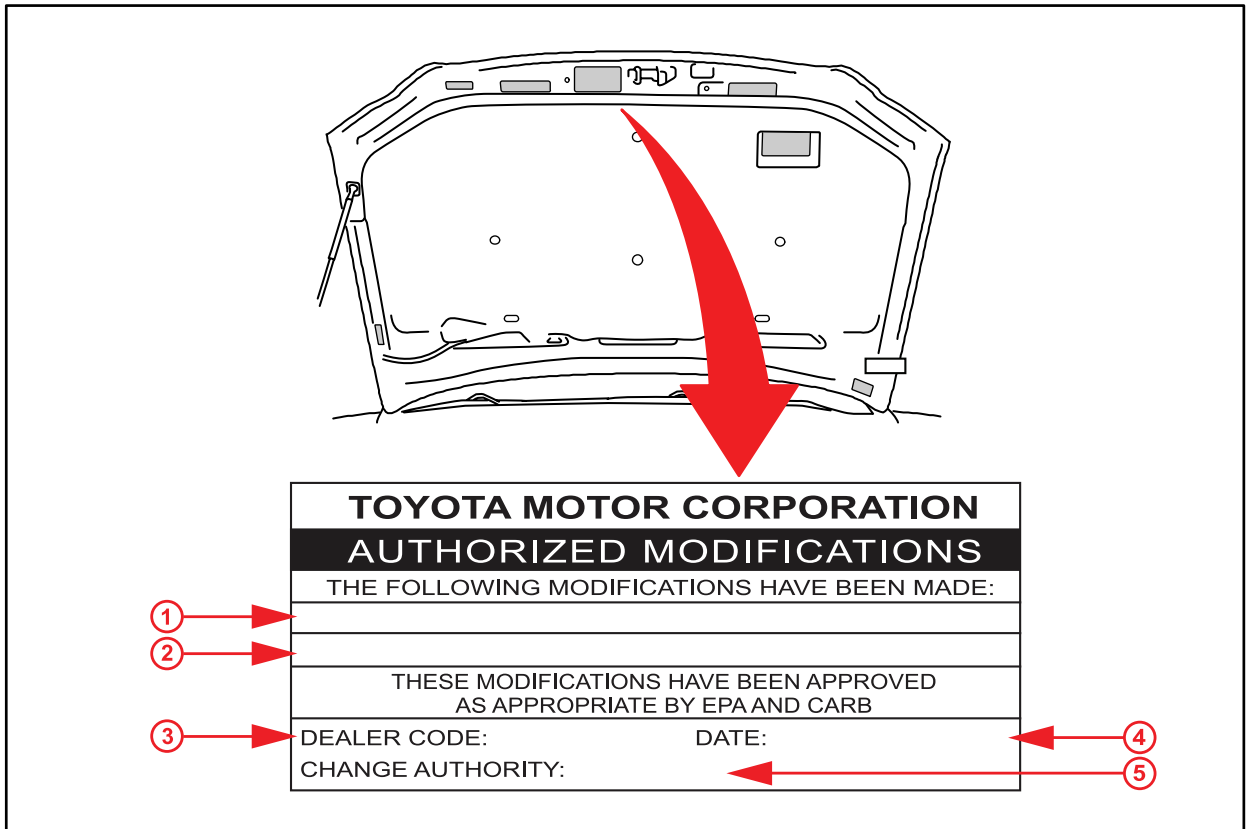
- [2011](#) / [2012](#) / [2013](#) Highlander HV:
Engine/Hybrid System – Intake/Exhaust – “2GR-FXE Intake/Exhaust: Intake Manifold: Removal”
- [2011](#) / [2012](#) / [2013](#) Highlander HV:
Engine/Hybrid System – Intake/Exhaust – “2GR-FXE Intake/Exhaust: Intake Manifold: Installation”

MIL "ON" DTC P2111 and/or P0A0F After Cold Soak

Repair Procedure (Continued)

4. Check for the Authorized Modifications Label affixed to the vehicle in the location shown in Figure 1. Confirm if the ECM (PCM) calibrations have been updated. If the calibration IDs are NOT the latest calibrations — go to step 5.

Figure 1. Location of Authorized Modifications Label on 2011 – 2015 Highlander HV



1	Replacement ECM (PCM) Part Number (i.e., 89661-0E501)
2	New Calibration ID(s) (i.e., 30E26100)
3	Dealer Code

4	Date Completed
5	This SB Number

MIL "ON" DTC P2111 and/or P0A0F After Cold Soak

Repair Procedure (Continued)

- Flash Reprogram the ECM (PCM).

NOTE

- The GR8 Battery Diagnostic Station **MUST** be used in Power Supply Mode to maintain battery voltage at 13.5 volts while flash reprogramming the vehicle.
- For details on how to use the GR8 Battery Diagnostic Station, refer to the [GR8 Instruction Manual](#) located on the Technical Information System (TIS), *Diagnostics – Tools & Equipment – Battery Diagnostics*.

Follow the procedures outlined in Service Bulletin No. [T-SB-0012-13](#), "Techstream ECU Flash Reprogramming Procedure," and flash the ECM (PCM) with the NEW calibration file update.

- Start the engine and warm it up to normal operating temperature before test driving.
- Test drive the vehicle to confirm proper vehicle operation (and proper laser cruise control operation, if equipped).
- Install the Authorized Modifications Label.
 - Using a permanent marker, enter the following information on the label:
 - ECM part number [*Refer to the **Parts Information** section for the **NEW PART NUMBER***]
 - Calibration ID(s) [*Refer to the **Calibration Information** section for the **NEW CALIBRATION ID***]
 - Dealer Code
 - Repair Date
 - Change Authority [***This bulletin number***]
 - Affix the Authorized Modifications Label to the vehicle at the location shown in Figure 1. The Authorized Modifications Label is available through the MDC, P/N 00451-00001-LBL.
- Calibration update is complete.

NOTE

The effect of the NEW calibration may become more apparent after several days of driving as the ECM (PCM) "learned values" are re-established from the customer's driving.