

LED Headlight Housing Fracture & Condensation Accumulation

Service
Category Vehicle Exterior

Section Lighting (ext)

Market USA

Lexus Supports
ASE Certification 

Applicability

YEAR(S)	MODEL(S)	ADDITIONAL INFORMATION
2014 – 2015	IS250, IS350	VDS(s): BE1D2, BF1D2, CE1D2, CF1D2

Introduction

Some 2014 – 2015 model year IS 250 and IS 350 vehicles may exhibit one or more of the following conditions:

- Condensation accumulation within a headlight assembly
- Headlight error code from the Headlamp Control Computer Sub-assembly

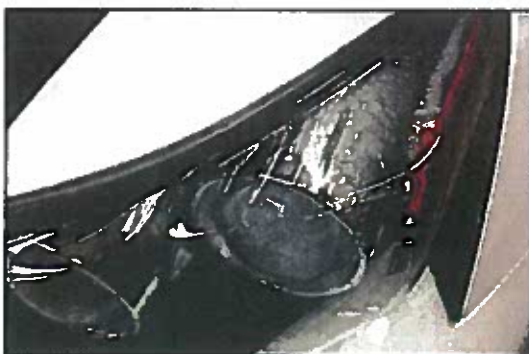
These conditions most often occur in cold weather climates. They may occur on one or both headlights, and may be a result of an opening/fracture near the uppermost mounting tab of the headlight. The headlight housing has been revised to address these conditions.

After reviewing this Service Bulletin, confirm the condition of BOTH headlights' mounting tabs and replace as necessary according to the procedures in this bulletin.

NOTE

- This bulletin applies to vehicles equipped with LED headlights.
- Confirm headlight and ECU part number applicability based on VIN prior to ordering parts.
- Confirm the condition of BOTH uppermost headlight tabs **BEFORE** attempting to adjust the headlight assembly.

Figure 1. Example of Headlight Condensation



LED Headlight Housing Fracture & Condensation Accumulation

Production Change Information

This bulletin applies to vehicles produced **BEFORE** the Production Change Effective VINs shown below.

MODEL	DRIVETRAIN	PRODUCTION CHANGE EFFECTIVE VIN
IS 250	2WD	JTHBF1D2#F5055942
	AWD	JTHCF1D2#F5019779
IS 350	2WD	JTHBE1D2#F5016767
	AWD	JTHCE1D2#F5007186

Warranty Information

OP CODE	DESCRIPTION	TIME	OFF	T1	T2
EL1414	R & R Headlight Assembly and Adjust Headlight Aim (One Side)	1.6	81145-53750 81185-53750	66	16
EL1414A	Opposite Side	0.9			

APPLICABLE WARRANTY

- This repair is covered under the Lexus Basic Warranty. This warranty is in effect for 48 months or 50,000 miles, whichever occurs first, from the vehicle's in-service date.
- Warranty application is limited to occurrence of the specified condition described in this bulletin.

Parts Information

PART NUMBER		PART NAME	QTY
PREVIOUS	NEW		
81145-53750	81145-53751	Unit, Headlamp w/Gasket, RH	1
81185-53750	81185-53751	Unit, Headlamp w/Gasket, LH	1
81107-53750		Computer Sub-assy, Headlamp Control*	2 per Headlight

* Confirm correct part number BEFORE ordering parts.
If headlight assembly was saturated with water at any point, replace BOTH Headlamp Control Computer Sub-assemblies.

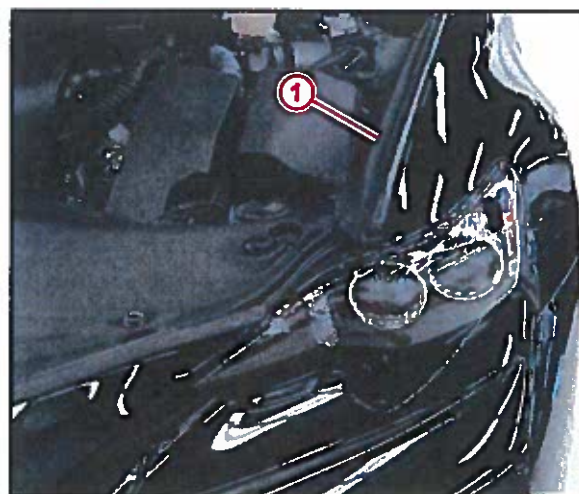
LED Headlight Housing Fracture & Condensation Accumulation

Repair Procedure

1. Inspect BOTH headlight mounting tabs to confirm if the condition is present.

A. Partially remove the hood to front fender seal (upper front fender protector) to access a view of the uppermost headlight tab.

Figure 2.



1 Hood to Front Fender Seal

Figure 3. View of Headlight Installed in Vehicle

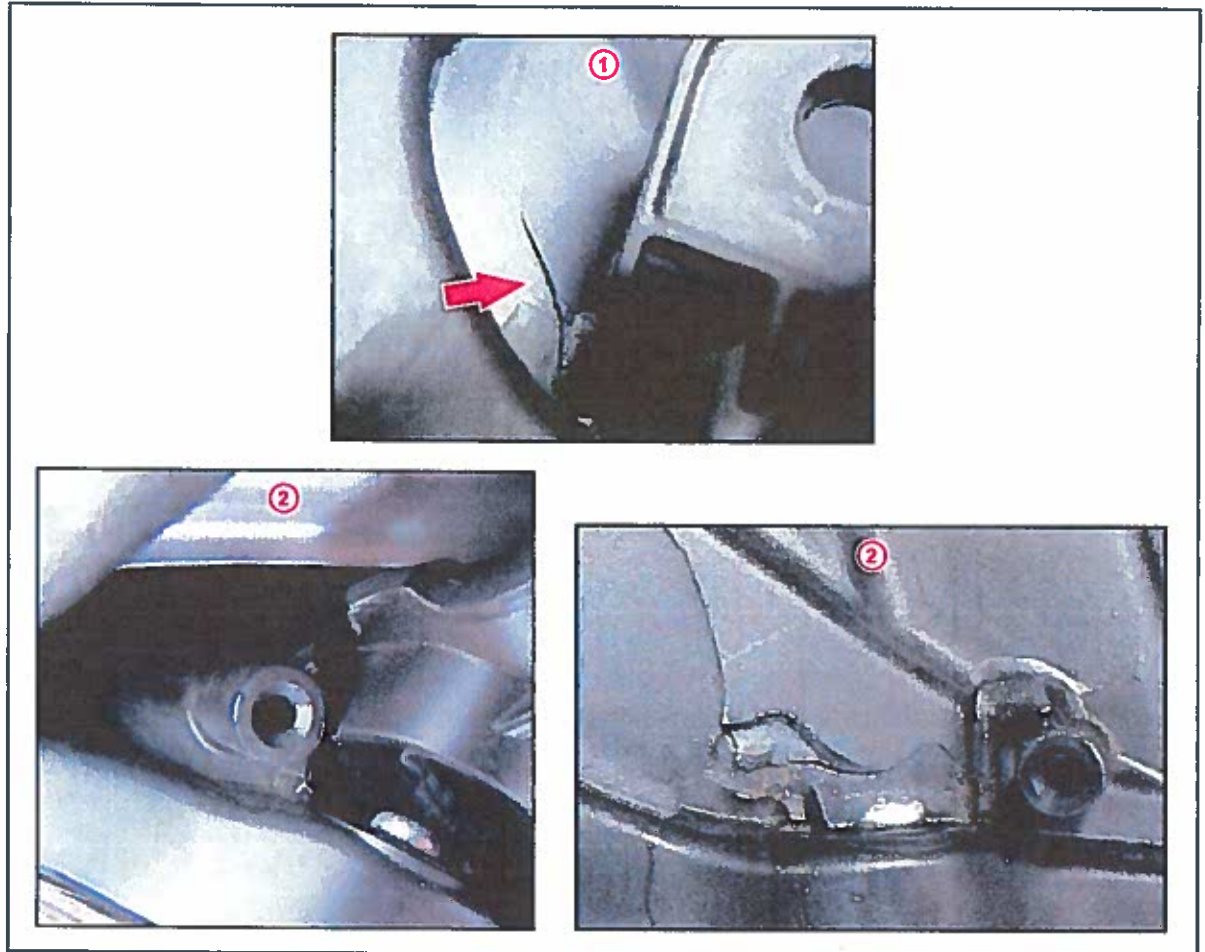


LED Headlight Housing Fracture & Condensation Accumulation

Repair Procedure (Continued)

B. Inspect for signs of damage or mounting tab separation. (See Figure 4.)

Figure 4. Examples of Damage (Headlight Removed from Vehicle)



1 Fracture

2 Mounting Tab Separation

LED Headlight Housing Fracture & Condensation Accumulation

Repair Procedure (Continued)

2. Replace the affected headlight(s).

NOTICE

If the headlight assembly was saturated with water at any point, replace both of the installed Headlamp Control Computer Sub-assemblies.

Refer to the Technical Information System (TIS), applicable model and model year Repair Manual:

- 2014 – 2015 IS 250/350:

- Bumper Removal:

Vehicle Exterior – Exterior Panels/Trim – “Exterior Panels/Trim: Front Bumper (for Sport Package) / (for standard): Removal”

- Headlight Removal and Disassembly:

Vehicle Exterior – Lighting (Ext) – “Lighting (Ext): Headlight Assembly (for LED Headlight): Removal / Disassembly”

NOTICE

After the headlight body gaskets are removed, be sure to replace them with NEW ones. Failure to do so may cause water ingress.

- 2014 – 2015 IS 250/350:

- Headlight Reassembly and Installation:

Vehicle Exterior – Lighting (Ext) – “Lighting (Ext): Headlight Assembly (for LED Headlight): Reassembly / Installation”

- Bumper Installation:

Vehicle Exterior – Exterior Panels/Trim – “Exterior Panels/Trim: Front Bumper (for Sport Package) / (for standard): Removal”

3. Adjust headlight aim.

HINT

LED headlights have a very distinctive cut-off that some customers may describe as “headlight aim too low.” Be sure to properly adjust the headlight aim per the Repair Manual.

Refer to TIS, applicable model and model year Repair Manual:

- 2014 – 2015 IS 250/350:

Vehicle Exterior – Lighting (Ext) – “Lighting (Ext): Headlight Assembly (for LED Headlight): Adjustment”

