



## INSTRUCTION TO SERVICE

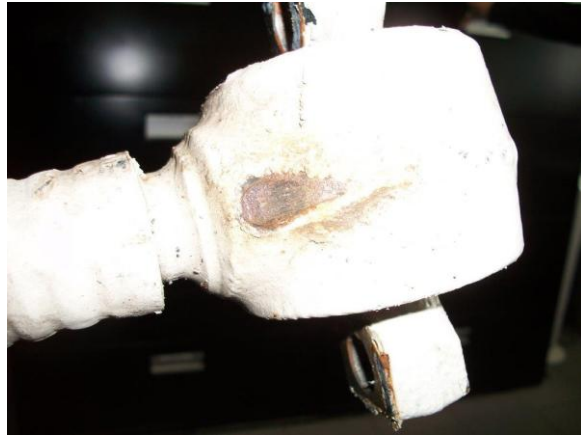
<b>ITS: 5904</b>	
<b>SECTION:</b>	Chassis
<b>WRITTEN BY:</b>	Kevin Robinson
<b>SUBJECT:</b>	MIDI - Inspect axle tower. Replace as required.

# ITS5904

THIS DOCUMENT AND THE CONTENTS DISCUSSED HEREIN ARE THE CONFIDENTIAL AND PROPRIETARY INFORMATION OF NEW FLYER INDUSTRIES CANADA ULC AND NEW FLYER OF AMERICA INC. AND ARE DISCLOSED BY NEW FLYER IN CONFIDENCE. THIS DOCUMENT AND THE CONTENTS HEREIN ARE NOT TO BE DISCLOSED BY THE INTENDED RECIPIENT WITHOUT THE PRIOR WRITTEN AUTHORIZATION OF NEW FLYER. ANY UNAUTHOIZED DISCLOSURE, REPRODUCTION OR OTHER DISTRIBUTION OF THIS DOCUMENT OR INFORMATION IS STRICTLY PROHIBITED AND MAY RESULT IN ACTION BEING TAKEN AGAINST THE PARTY MAKING THE UNAUTHORIZED DISCLOSURE. THIS DOCUMENT AND ALL COPIES HEREOF MUST BE RETURNED TO NEW FLYER UPON REQUEST.

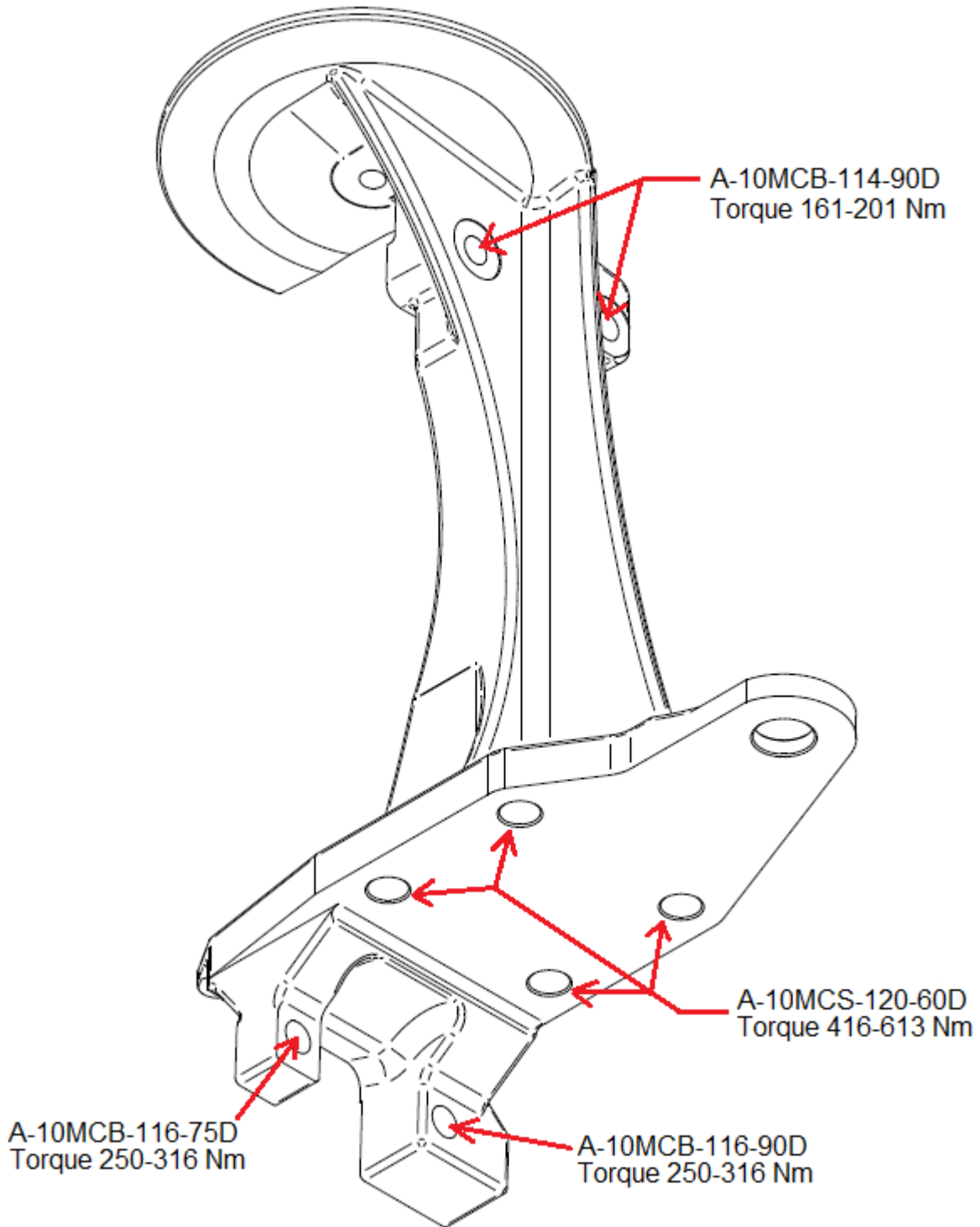
**PROCEDURE:**

1. Turn the main battery disconnect switch to the “OFF” position.
2. Inspect the street (left) side lower link bar for signs of contact with the axle tower.



**Figure 1: Signs of interference**

3. If there are signs of interference present, replace the front street side axle tower (NF PN A-455106), lower link bar (NF PN A-454624), mounting bolts (NF PN A-10MCB-116-90D, NF PN A-10MCB-116-75D, NF PN A-10MCS-116-50D), and nuts (NF PN A-10MCN-516D).
  - a. Replace all hardware shown in Figure 2. New nuts will also be supplied.
  - b. Torque hardware as shown on Figure 2.
  - c. Torque A-10MCS-116-50D 250-316 Nm
4. Set suspension and align as required.
5. Remove tools and debris and return the bus to service condition.
6. Turn the main battery disconnect switch to the “ON” position.



**Figure 2: Axle tower hardware**

### LABOUR ESTIMATE

	Operation	Men	Hours	Labour Time M X HR
1	Inspect LH axle tower casting for interference	1	0.5	0.5
2	Replace LH axle tower casting	1	3.0	3.0

### PARTS REQUIRED

Item	Part Number	Description	Qty. per Coach	Units	Notes
1	A-455106	CASTING - TOWER LH	1	EA	
2	A-454624	LINK - LOWER 55 SERIES	1	EA	
3	A-10MCB-116-90D	BOLT M16X90 GRADE 10	1	EA	
4	A-10MCB-116-75D	BOLT 16X75	1	EA	
5	A-10MCS-116-50D	SCREW M16X50 GRADE 10	2	EA	
6	A-10MCN-516D	NUT FULL S/L M16	4	EA	
7	A-10MCS-120-60D	SETSCREW M20X60	4	EA	
8	A-10MCN-514	NUT M14	2	EA	
9	A-10MCB-114-90D	BOLT M14X90	2	EA	