



## INSTRUCTION TO SERVICE

<b>ITS: 5997</b>	
<b>SECTION:</b>	Chassis
<b>WRITTEN BY:</b>	Kevin Robinson
<b>SUBJECT:</b>	MIDI – Change coolant sight glass levels and install new breather tube.

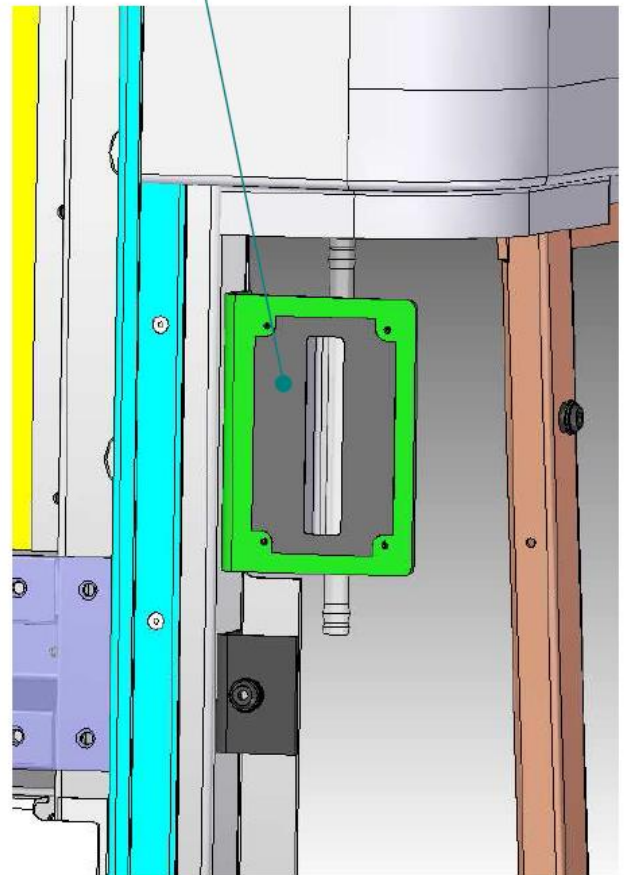
# ITS5997

THIS DOCUMENT AND THE CONTENTS DISCUSSED HEREIN ARE THE CONFIDENTIAL AND PROPRIETARY INFORMATION OF NEW FLYER INDUSTRIES CANADA ULC AND NEW FLYER OF AMERICA INC. AND ARE DISCLOSED BY NEW FLYER IN CONFIDENCE. THIS DOCUMENT AND THE CONTENTS HEREIN ARE NOT TO BE DISCLOSED BY THE INTENDED RECIPIENT WITHOUT THE PRIOR WRITTEN AUTHORIZATION OF NEW FLYER. ANY UNAUTHOIZED DISCLOSURE, REPRODUCTION OR OTHER DISTRIBUTION OF THIS DOCUMENT OR INFORMATION IS STRICTLY PROHIBITED AND MAY RESULT IN ACTION BEING TAKEN AGAINST THE PARTY MAKING THE UNAUTHORIZED DISCLOSURE. THIS DOCUMENT AND ALL COPIES HEREOF MUST BE RETURNED TO NEW FLYER UPON REQUEST.

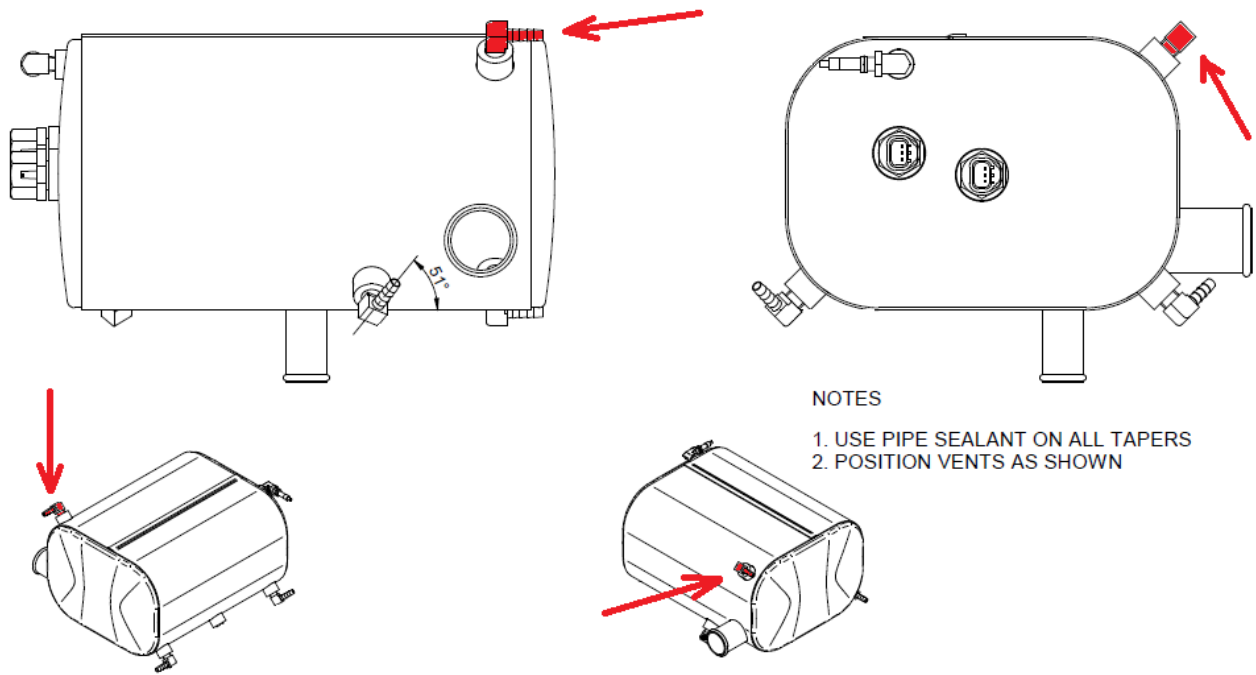
**PROCEDURE:**

1. Turn the main battery disconnect switch to the “OFF” position.
  2. Remove the rear left corner bumper to access the sight glass mounting plate and level decal. Keep all hardware for re-use. Disconnection of the lamps may be necessary.
  3. Clean the existing decal with the supplied Formoa surface activator (NF PN A-95300122).
  4. Cover the existing decal with the supplied blanking decal (NF PN A-79113554).
  5. Release pressure on the surge tank slowly by cracking the fill cap.
  6. Locate the fitting, shown on the surge tank drawing below in Figure 2.
  7. Remove the hose from the fitting.
  8. Remove the fitting from the surge tank and discard.
  9. Install the new fitting (NF PN A-454148). Add thread sealant to the threads of the fitting and re-install it into the surge tank. Orienting it as it was originally installed.
- NOTE:** The new fitting will have a small hole drilled 1.75 inches up from the bottom of the soldered-on tube to allow trapped air to escape.
10. Re-install the tube and gear clamp to the new fitting.
  11. Replace the rear left corner bumper using the hardware removed previously. Reconnect the lamps, as required.
  12. Clean the surface around the cut out for the coolant sight glass with the supplied Formoa surface activator (NF PN A-95300122).
  13. Once the Formoa surface activator has flashed off, install the new coolant level decal (NF PN A-79113553) in place by centering it on the panel cut out. Refer to Figure 3.
  14. Remove all tools and debris and return the bus to service condition.
  15. Turn the main battery disconnect switch to the “ON” position.

BLANKING LABEL



**Figure 1: Blanking label installed**



**Figure 2: Location of the fitting to be replaced. Multiple views shown.**



**Figure 3: New level indicator decal installed.**

<b>LABOUR ESTIMATE</b>				
	Operation	Men	Hours	Labour Time M X HR
1	MIDI – Change coolant sight glass levels and install new breather tube.	1	4.0	4.0

<b>PARTS REQUIRED</b>					
Item	Part Number	Description	Qty. per Coach	Units	Notes
1	A-95300122	FORMOA SURFACE ACTIVATOR	0.1	EA	
2	A-79113553	DECAL - SIGHT GLASS : LEVEL INDICATOR	1	EA	
3	A-79113554	DECAL - SIGHT GLASS :BLANKING DECAL	1	EA	
4	A-454148	WA FILLER BREATHER	1	EA	