



# TECHNICAL SERVICE INFORMATION BULLETIN

TSIB 15-01, rev B		November 4, 2015
<b>TO:</b>	All Operators	
<b>TITLE:</b>	Steering Damper Mount Inspection	
<b>APPLICABILITY:</b>	All New Flyer Xcelsior Buses	

This TSIB applies to all Xcelsior buses and outlines the steps required to inspect the steering damper mounts.

A loose steering damper will have reduced effectiveness and could lead to excessive vibration in the steering system.

Please ensure that steering dampers are maintained in accordance with this Technical Service Information Bulletin and the New Flyer Service Manual.

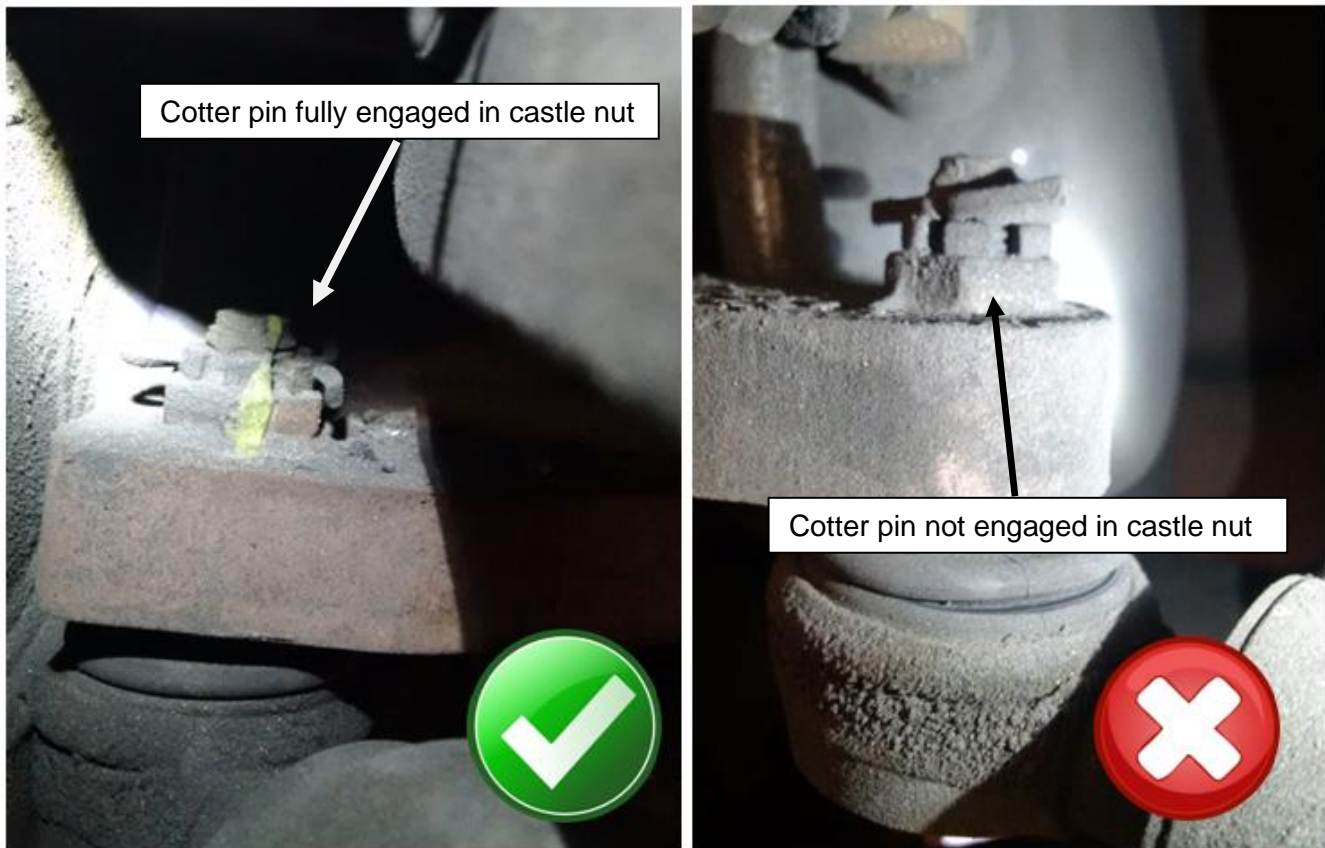
**NOTE:** Rev. B of this TSIB correctly lists the washer part number as New Flyer P/N 579798.

**Direct all inquiries regarding this bulletin to:**

Ted Kosokowsky  
Technical Service Manager  
New Flyer Service Organization  
☎ (204) 224-6859  
✉ Ted\_Kosokowsky @newflyer.com

1. Raise the bus and locate the steering damper connecting the curb side front axle steering knuckle and the chassis.
2. Inspect the damper ball studs and both the frame and knuckle mounting plates:
  - Attempt to move the damper within the mounts using a pry bar.
  - Rotate the steering wheel several times through its full range of motion to look for free play between the damper and mounting plates.
  - The castle nut at both joints should be tight and the cotter pin should be fully engaged in the castle nut.
  - No relative motion between the damper ball stud and the mounting plate is permissible

Figure 1 demonstrates an acceptable installation on the left and a defective installation on the right.



**Figure 1: Typical examples of acceptable (left) and unacceptable (right) steering damper installations**



3. Perform the following actions outlined in the table below depending on the condition of the damper mounts:

Damper and Mount Condition	Recommended Action
No issue found	No action required. Apply a torque stripe to the castle nut if none is present.
Cotter pin is missing (No play between ball studs and mounts)	Torque castle nut to 55 ft-lbs dry and install cotter pin (NF P/N 6360402). Ensure cotter pin fully engages castle nut. Apply a torque stripe to the nut.
Cotter pin does not fully engage castle nut (No play between ball studs and mounts)	Remove and discard cotter pin. Install a washer (NF P/N 579798) between the castle nut and mount. Torque the castle nut to 55 ft-lbs dry. Install a new cotter pin (NF P/N 6360402). Ensure cotter pin fully engages castle nut. Apply a torque stripe to the nut.
Free play between the damper ball studs and mounting plates	Remove the existing affected mount and replace it with a new chassis-side (NF P/N 579980) or axle-side (NF P/N 583640) mount according to the instructions in the New Flyer Service Manual. Replace the damper, both castle nuts, and both cotter pins at this time.
Unattached steering damper joints (Ball joint stud completely separated from mount)	Remove the existing affected mount and replace it with a new chassis-side (NF P/N 579980) or axle-side (NF P/N 583640) mount according to the instructions in the New Flyer Service Manual. Replace the damper, both castle nuts, and both cotter pins at this time.

4. Lower the bus and return it to service condition.