



INSTRUCTION TO SERVICE

ITS: 6075	
SECTION:	Chassis
WRITTEN BY:	Kevin Robinson
SUBJECT:	MiDi – remove and replace block heater

ITS6075

THIS DOCUMENT AND THE CONTENTS DISCUSSED HEREIN ARE THE CONFIDENTIAL AND PROPRIETARY INFORMATION OF NEW FLYER INDUSTRIES CANADA ULC AND NEW FLYER OF AMERICA INC. AND ARE DISCLOSED BY NEW FLYER IN CONFIDENCE. THIS DOCUMENT AND THE CONTENTS HEREIN ARE NOT TO BE DISCLOSED BY THE INTENDED RECIPIENT WITHOUT THE PRIOR WRITTEN AUTHORIZATION OF NEW FLYER. ANY UNAUTHOIZED DISCLOSURE, REPRODUCTION OR OTHER DISTRIBUTION OF THIS DOCUMENT OR INFORMATION IS STRICTLY PROHIBITED AND MAY RESULT IN ACTION BEING TAKEN AGAINST THE PARTY MAKING THE UNAUTHORIZED DISCLOSURE. THIS DOCUMENT AND ALL COPIES HEREOF MUST BE RETURNED TO NEW FLYER UPON REQUEST.

PROCEDURE:

1. Turn the main battery disconnect switch to the “OFF” position.
2. Open the engine access door.
3. Locate the block heater on the engine block.
4. Disconnect the existing cord and discard.
5. Using a wrench, unscrew the existing block heater from the engine block.
6. Install the new engine block heater (NF PN A-664998) into the block, in the same spot the original was removed from.
7. Connect the new cord (NF PN A-664997) to the newly installed block heater and route to a location that is suitable for the end customer.

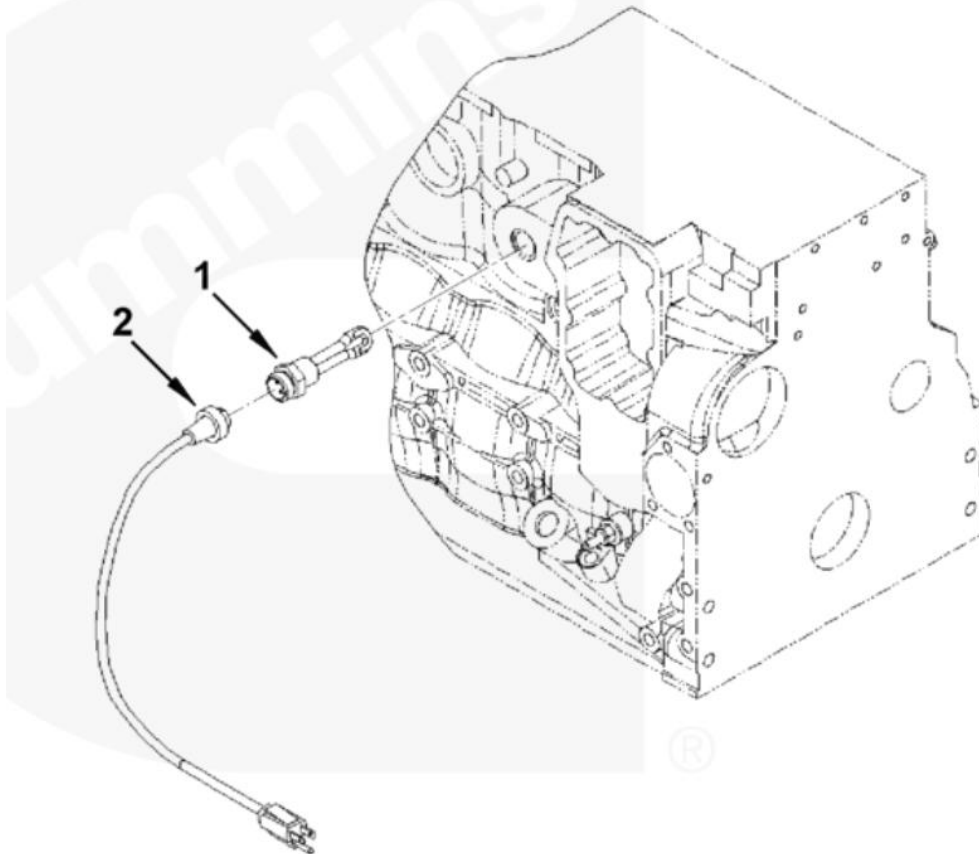


Figure 1: Location of Engine Block Heater

8. Remove tools and debris and return the bus to service condition.
9. Turn the main battery disconnect switch to the “ON” position.



NEW FLYER

LABOUR ESTIMATE

	Operation	Men	Hours	Labour Time M X HR
1	MiDi – remove and replace block heater	1	1.0	1.0

PARTS REQUIRED

Item	Part Number	Description	Qty. per Coach	Units	Notes
1	A-664998	HEATER - ENGINE BLOCK	1	EA	
2	A-664997	CABLE - ENGINE HEATER	1	EA	