

**NABI: BRT: Adjustable Pedal Assembly and Air Vent Clearance
Inspection**



Prepared by: Kalman Takacs
Sr. Field Service Engineer

Approved by: Dan Allen
Chief Engineer of Manufacturing and Service Support

Property name and Top bus number: BRT style bus equipped with adjustable pedal assembly

Issue: Inspection for clearance between accelerator pedal and air vent nozzle.

Reason: Air vent nozzle should not interfere with the pedal assembly in any position

Solution: Adjust pedal assembly all the way forward and check for clearance between accelerator pedal and air vent per this work instruction. Fill out the attached inspection sheet and return it to New Flyer of America.

**NABI: BRT: Adjustable Pedal Assembly and Air Vent Clearance
Inspection**



Effectuated buses: as required

Estimated repair hours/bus: Inspection takes 2 minutes.

Engineering documentation:

Necessary parts:

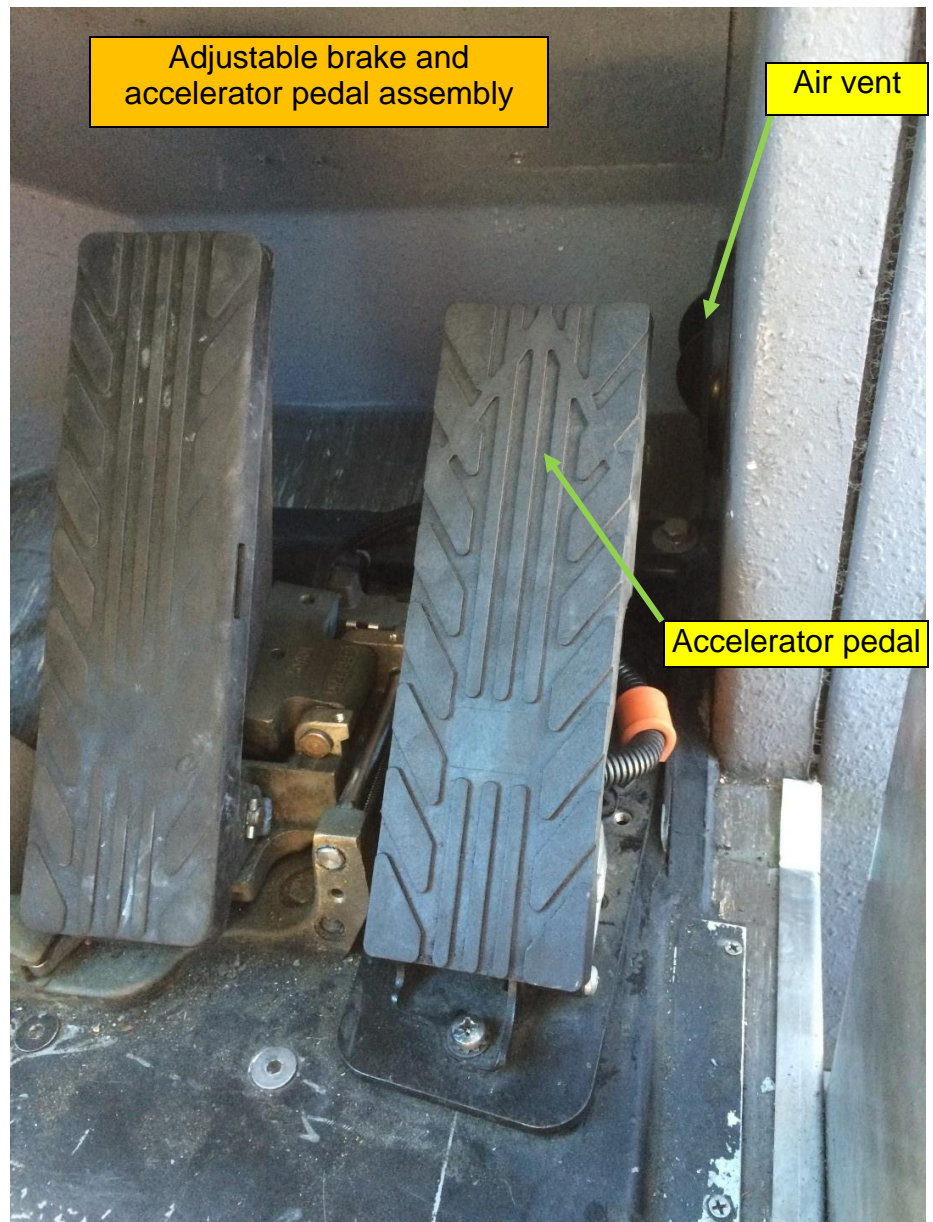
NA

Necessary tools:

NA

SAFETY PRECAUTIONS MUST BE FOLLOWED ACCORDING TO ACCEPTED INDUSTRY STANDARDS AND LOCAL/PROPERTY REQUIREMENTS.

1. Park bus on a flat surface and apply the parking brake.
2. By using the control button on the dash, move pedal assembly all the way forward.



Use control button on dash to move pedal assembly all the way forward.



3. Turn engine off.

**NABI: BRT: Adjustable Pedal Assembly and Air Vent Clearance
Inspection**



4. Push the accelerator pedal all the way down and check for clearance between the pedal and the air vent. Mark the appropriate column beside the inspected bus number on the attached matrix whether the clearance is $1/8$ " or larger or the clearance is smaller than $1/8$ ". Send the completed inspection matrix back to the following person:

Laszlo Juhasz | Engineering Program Manager

Engineering | New Flyer of America

106 National Dr. Anniston, AL 36207

256 241-1234 | laszlo.juhasz@newflyer.com

Clearance is larger than $1/8$ "



Clearance is less than $1/8$ "

