

# TECHNICAL BULLETIN

## LTB00793NAS1

### 17 SEP 2015



© Jaguar Land Rover North America, LLC

NOTE: The information in Technical Bulletins is intended for use by trained, professional Technicians with the knowledge, tools, and equipment required to do the job properly and safely. It informs these Technicians of conditions that may occur on some vehicles, or provides information that could assist in proper vehicle service. The procedures should not be performed by 'do-it-yourselfers'. If you are not a Retailer, do not assume that a condition described affects your vehicle. Contact an authorized Land Rover service facility to determine whether this bulletin applies to a specific vehicle.

### **SECTION: 204-05**

## Air Suspension Compressor Exhaust Valve Fails To Vent

### **AFFECTED VEHICLE RANGE:**

#### **LR4 (LA)**

**Model Year:** 2015

**VIN:** 745077-757939

**Manufacturing Plant:** Solihull

**With:** Dynamic Suspension

#### **Range Rover Sport (LW)**

**Model Year:** 2015

**VIN:** 505041-518006

**Manufacturing Plant:** Solihull

**With:** Dynamic Suspension

#### **Range Rover (LG)**

**Model Year:** 2015

**VIN:** 197621-214627

**Manufacturing Plant:** Solihull

**With:** Dynamic Suspension

### **MARKETS:**

NAS

### **CONDITION SUMMARY:**

**Situation:** The air suspension system may not raise/lower with a warning displayed on the Instrument Cluster and Diagnostic Trouble Codes (DTC) C1A13-64, C1A36-01, and/or C1A24-67 may be stored.

**Cause:** This may be caused by the exhaust valve within the air suspension system compressor 'sticking' due to manufacturing issues.

**Action:** Should a customer express this concern, follow the Service Instruction below.

### **PARTS:**

LR075760	Air suspension compressor exhaust valve - LR4 (L319)	Quantity: 1
LR075759	Air suspension compressor exhaust valve - Range Rover Sport (L494), Range Rover (L405)	Quantity: 1

### **TOOLS:**

SDD with latest DVD and Calibration File

Jaguar Land Rover-approved Midtronics battery power supply

### **WARRANTY:**

 **NOTE: Repair procedures are under constant review, and therefore times are subject to change; those quoted here must be taken as guidance only. Always refer to TOPIx to obtain the**

latest repair time.



**NOTE: DDW requires the use of causal part numbers. Labor only claims must show the causal part number with a quantity of zero.**

DESCRIPTION	SRO	TIME (HOURS)	CONDITION CODE	CAUSAL PART
Air suspension compressor exhaust valve - Renew - LR4 (L319)	<b>64.50.05</b>	0.4	41	LR061888
Air suspension compressor exhaust valve - Renew - Range Rover Sport (L494; without third row seating)	<b>64.50.05</b>	0.7	41	LR052301
Air suspension compressor exhaust valve - Renew - Range Rover Sport (L494; with third row seating)	<b>64.50.05.50</b>	0.5	41	LR052301
Air suspension compressor exhaust valve - Renew - Range Rover (L405)	<b>64.50.05</b>	0.7	41	LR053604
Read and clear DTCs	<b>12.90.16</b>	0.2	42	LR008958



**NOTE: Normal Warranty procedures apply.**

**SERVICE INSTRUCTION:**



**CAUTION: before disconnecting or removing components, make sure the area around the joint faces and connections are clean. Plug open connections to prevent contamination.**



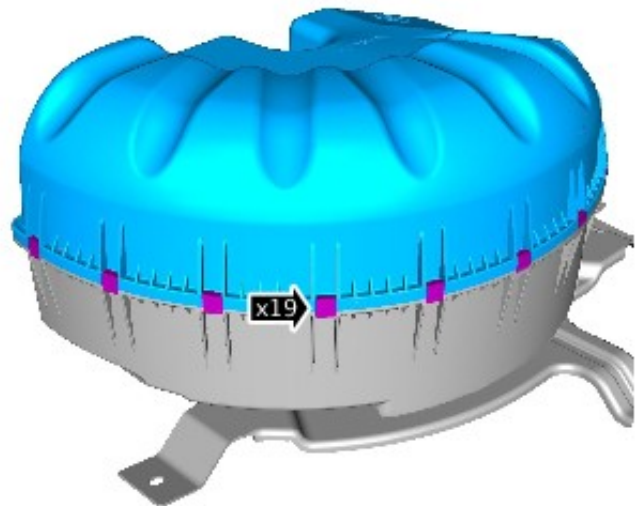
**NOTE: removal steps in this procedure may contain installation details.**

**1** Remove the air suspension compressor (see TOPIx Workshop Manual, see section 204-05).



**NOTE: steps 2-5: Range Rover Sport (L494) and Range Rover (L405) vehicles only.**

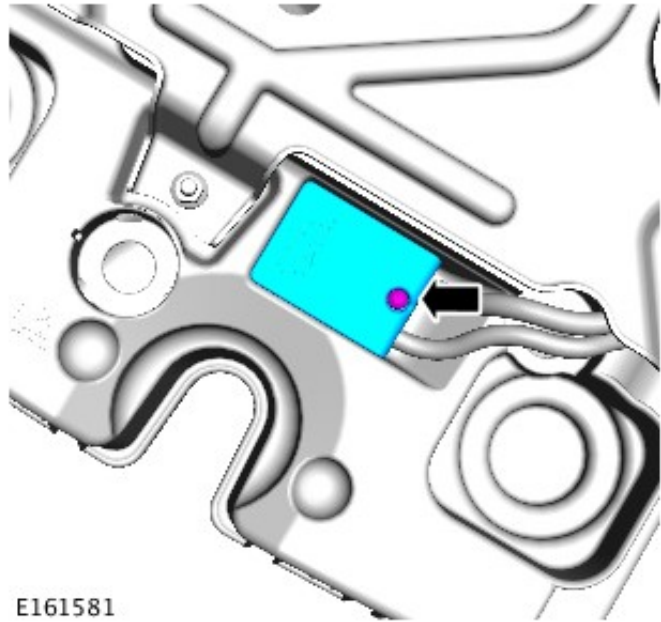
**2** Remove the air suspension compressor cover.



E161582

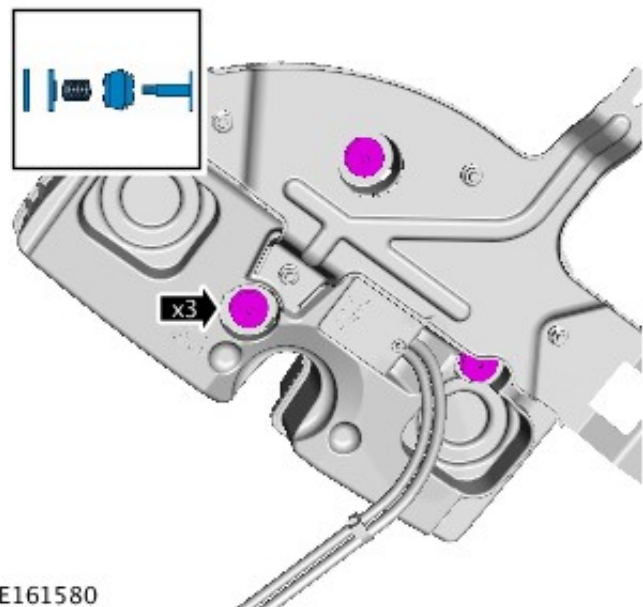
**3** Remove the retaining screw.


- Remove the electrical wiring cover.
- Torque: 1 Nm



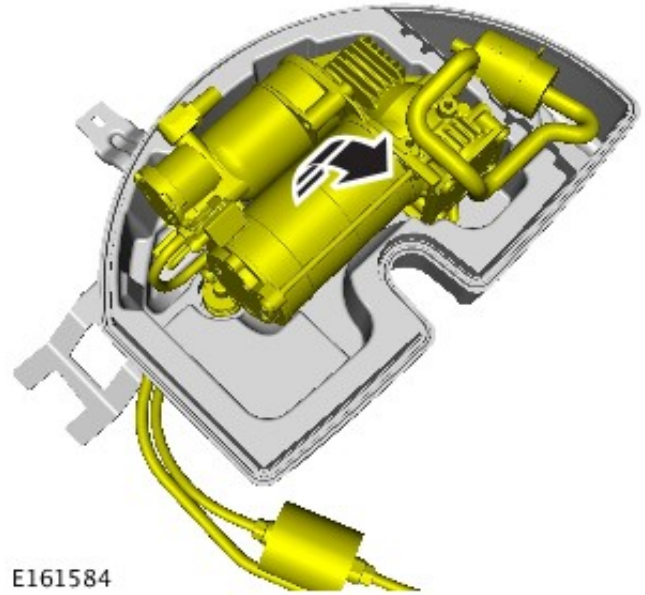
4 Remove the air suspension compressor retaining bolts.

- Torque: 10 Nm



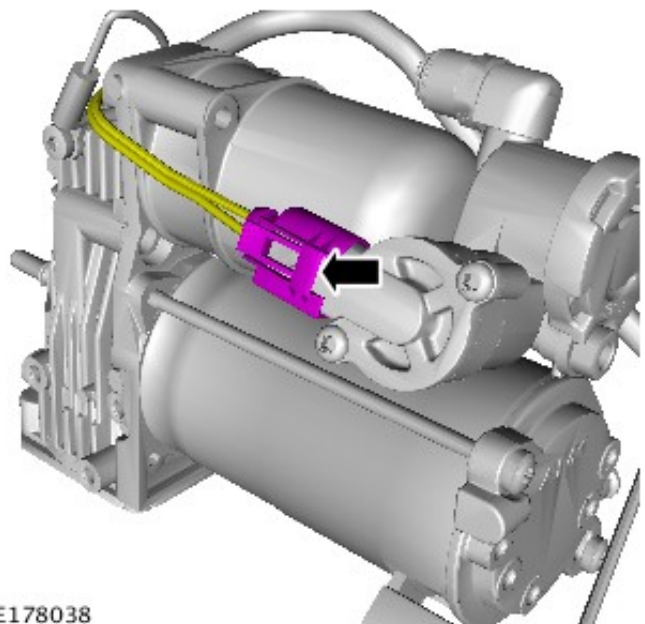
**5**  **CAUTION:** before replacing the upper cover, make sure that the intake hose and filter are fitted in their correct positions. Failure to follow this instruction may cause damage to the component.

Reposition the air suspension compressor to access the exhaust valve.



**NOTE: LR4 (L319) air suspension compressor shown; Range Rover Sport (L494) and Range Rover (L405) similar.**

**6** Remove the electrical connector from the exhaust valve of the air suspension compressor.

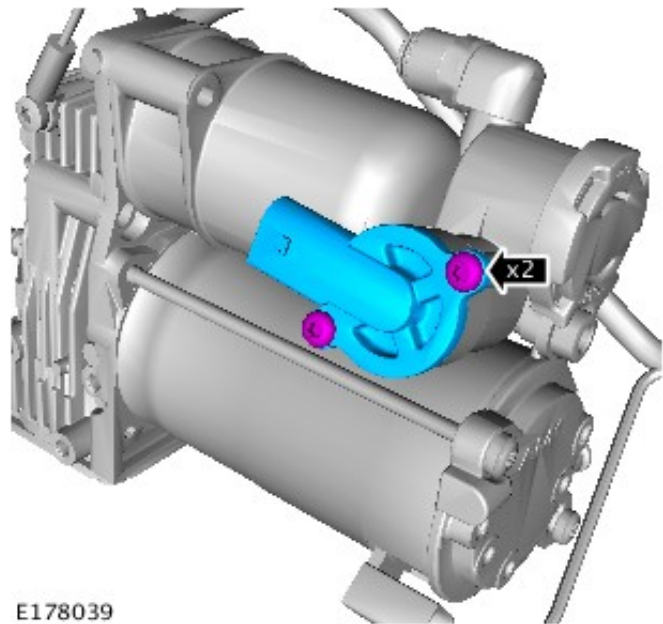



**7** **NOTE: note the installed position before removal.**

Remove the retaining screws from the exhaust

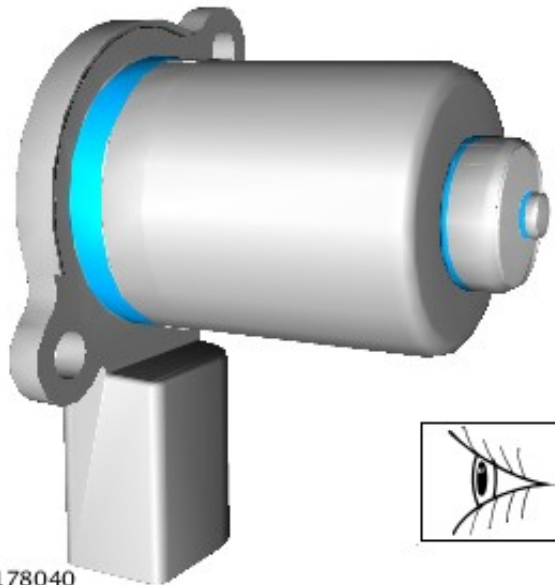
valve of the air suspension compressor.

- Remove the exhaust valve from the air suspension compressor.
- Torque: 3 Nm



- 8**  **CAUTION: when removing the air suspension compressor exhaust valve, all three o-rings must be removed from the air suspension compressor.**

Inspect the o-rings on the exhaust valve from the air suspension compressor.



**9** To install, reverse the removal procedure.

- 10**  **CAUTION: a Jaguar Land Rover-approved Midtronics battery power supply must be connected to the vehicle battery during SDD diagnosis / module programming.**

 **CAUTION: ensure all ignition 'ON' / ignition 'OFF' requests are carried out; failure to perform these steps may cause damage to control modules in the vehicle.**

Connect the Jaguar Land Rover-approved Midtronics battery power supply to the vehicle battery.

- 11** Turn ignition 'ON' (engine not running).
- 12** Connect the Symptom Driven Diagnostics (SDD) system to the vehicle and begin a new session.
- 13** Follow the on-screen prompts, allowing SDD to read the VIN and identify the vehicle and initiating the data collect sequence.
- 14** Read and clear the DTCs
- 15** Exit the current session.
- 16** Disconnect the SDD and the battery power supply from the vehicle.