

# TECHNICAL BULLETIN

## LTB00745NAS2

### 02 SEP 2015



© Jaguar Land Rover North America, LLC

NOTE: The information in Technical Bulletins is intended for use by trained, professional Technicians with the knowledge, tools, and equipment required to do the job properly and safely. It informs these Technicians of conditions that may occur on some vehicles, or provides information that could assist in proper vehicle service. The procedures should not be performed by 'do-it-yourselfers'. If you are not a Retailer, do not assume that a condition described affects your vehicle. Contact an authorized Land Rover service facility to determine whether this bulletin applies to a specific vehicle.

**This reissue replaces all previous versions. Please destroy all previous versions.**

Changes are highlighted in gray

### **SECTION: 501-02**

## Hood Fouls The Front Door And/Or Front Fender

### **AFFECTED VEHICLE RANGE:**

#### **Range Rover Sport (LW)**

**Model Year:** 2014

**VIN:** 000002-341851

**Manufacturing Plant:** Solihull

#### **Range Rover (LG)**

**Model Year:** 2013-2015

**VIN:** 001204-237617

**Manufacturing Plant:** Solihull

### **MARKETS:**

NAS

### **CONDITION SUMMARY:**

**Situation:** The hood may foul the front door and/or fender, causing the paint to be worn away.

**Cause:** This may be caused by softening of the engine compartment / hood seals, allowing the factory hood setting to move.

**Action:** Should a customer express this concern, follow the Service Instruction below.

### **WARRANTY:**



**NOTE:** An allowance equivalent to US\$121.50 (£75.00) has been allocated for locally sourced paint and materials; claim using 'ZZZ001'.



**NOTE:** Repair procedures are under constant review, and therefore times are subject to change; those quoted here must be taken as guidance only. Always refer to TOPIx to obtain the latest repair time.



**NOTE:** DDW requires the use of causal part numbers. Labor only claims must show the causal part number with a quantity of zero.

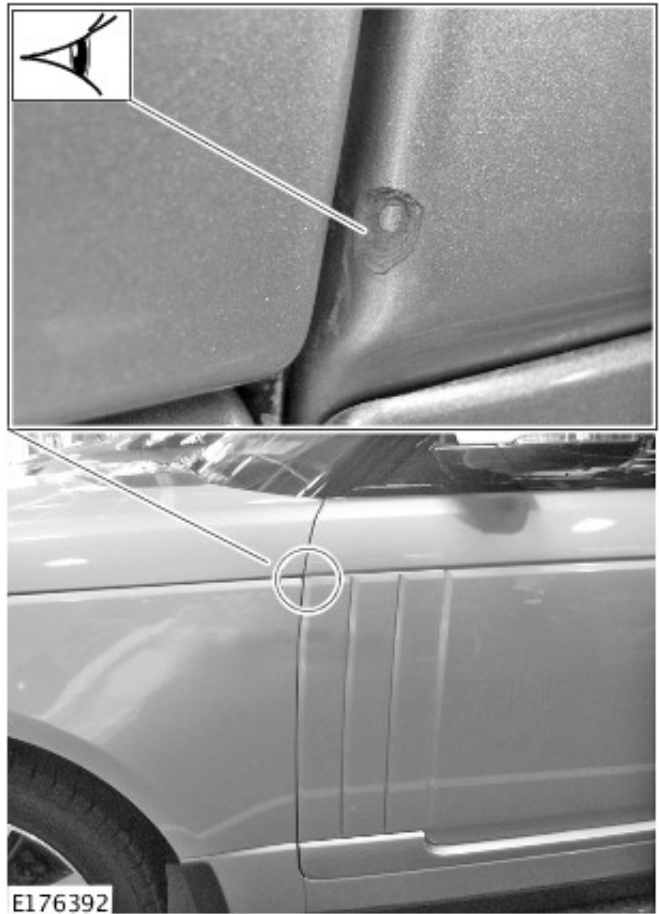
DESCRIPTION	SRO	TIME (HOURS)	CONDITION CODE	CAUSAL PART
Hood alignment - Check and adjust	<b>76.16.02</b>	0.3	07	LR036582
Local respray and repair	<b>79DAD3</b>	0.6	07	LR036582



**NOTE:** Normal Warranty procedures apply.

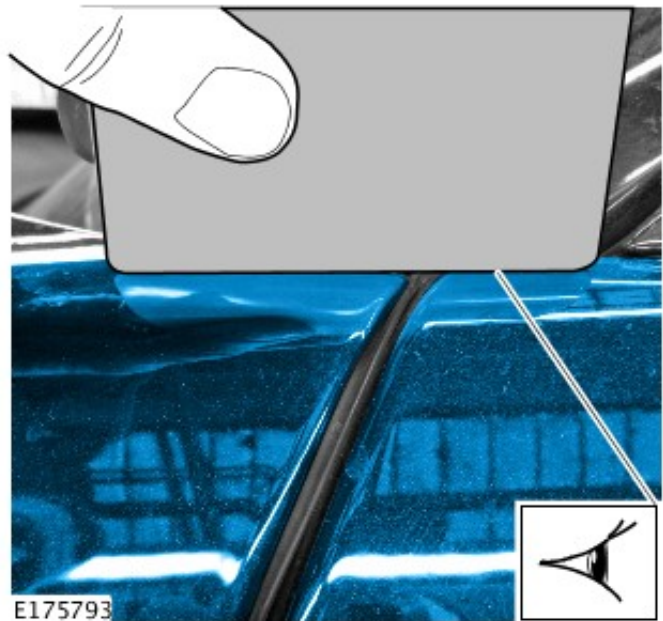
### **SERVICE INSTRUCTION:**

1 Check for signs of damage in the area shown.



2  **NOTE: Complete this step on both sides of the vehicle.**

Check the alignment of the hood to door.



3 Open the hood.

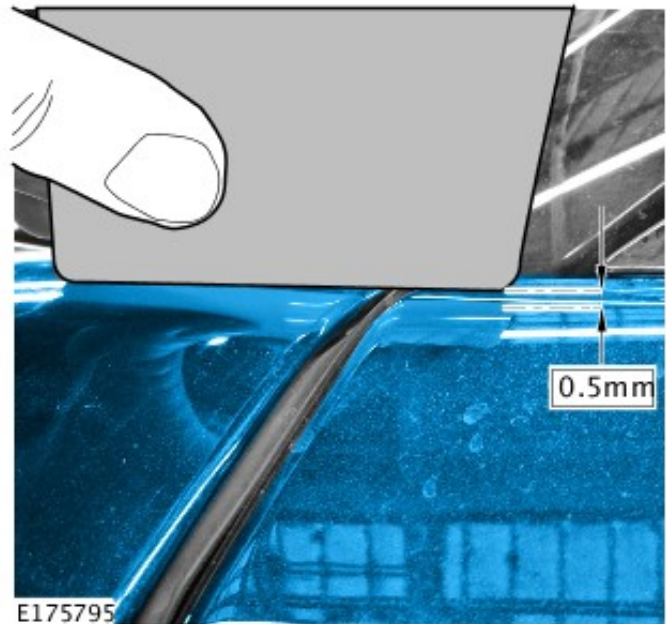
4  **NOTE: Complete this step on both sides of the vehicle if required.**

Using a suitable tool adjust the hood adjuster.



**5**  **NOTE: Complete this step on both sides of the vehicle if required.**

Adjust the hood adjuster until the hood is 0.5mm above the height of the door in the area shown.



**6** Repair and respray the damaged area where required.