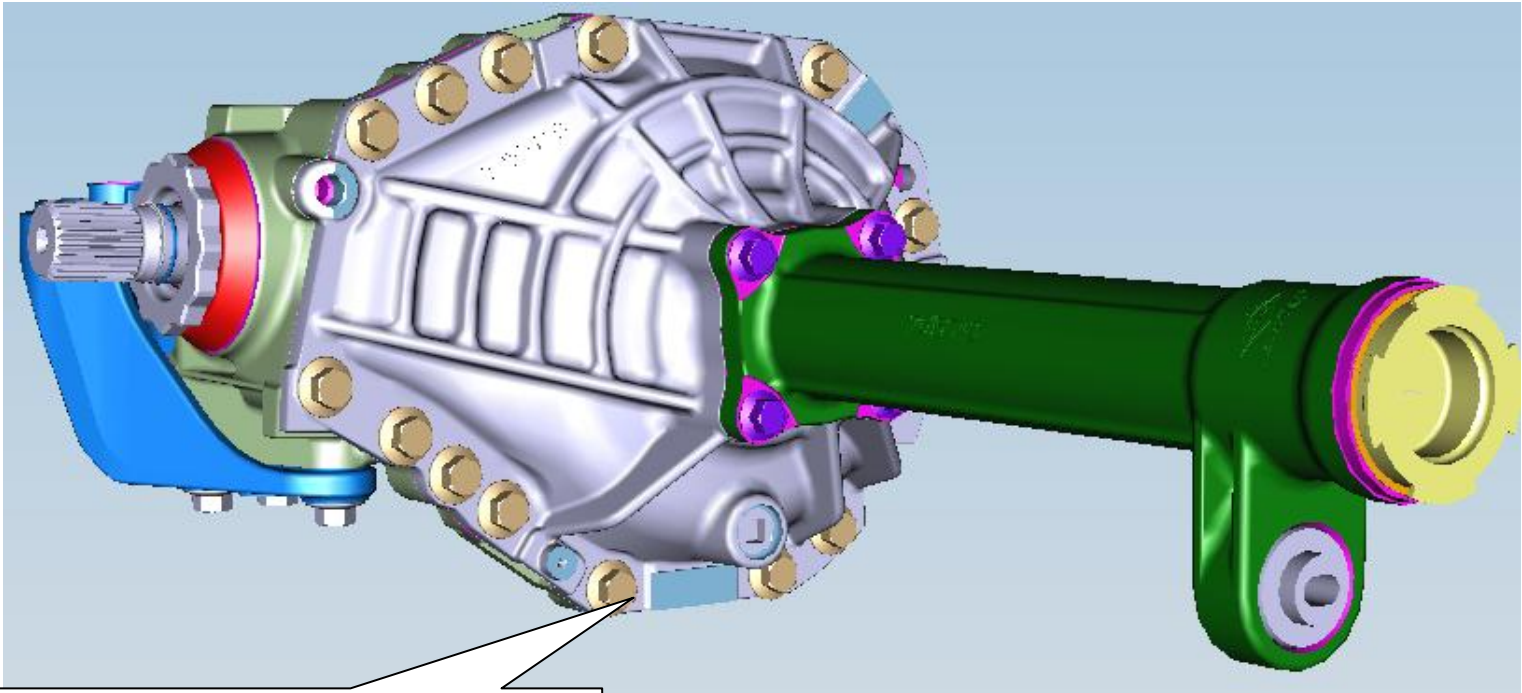
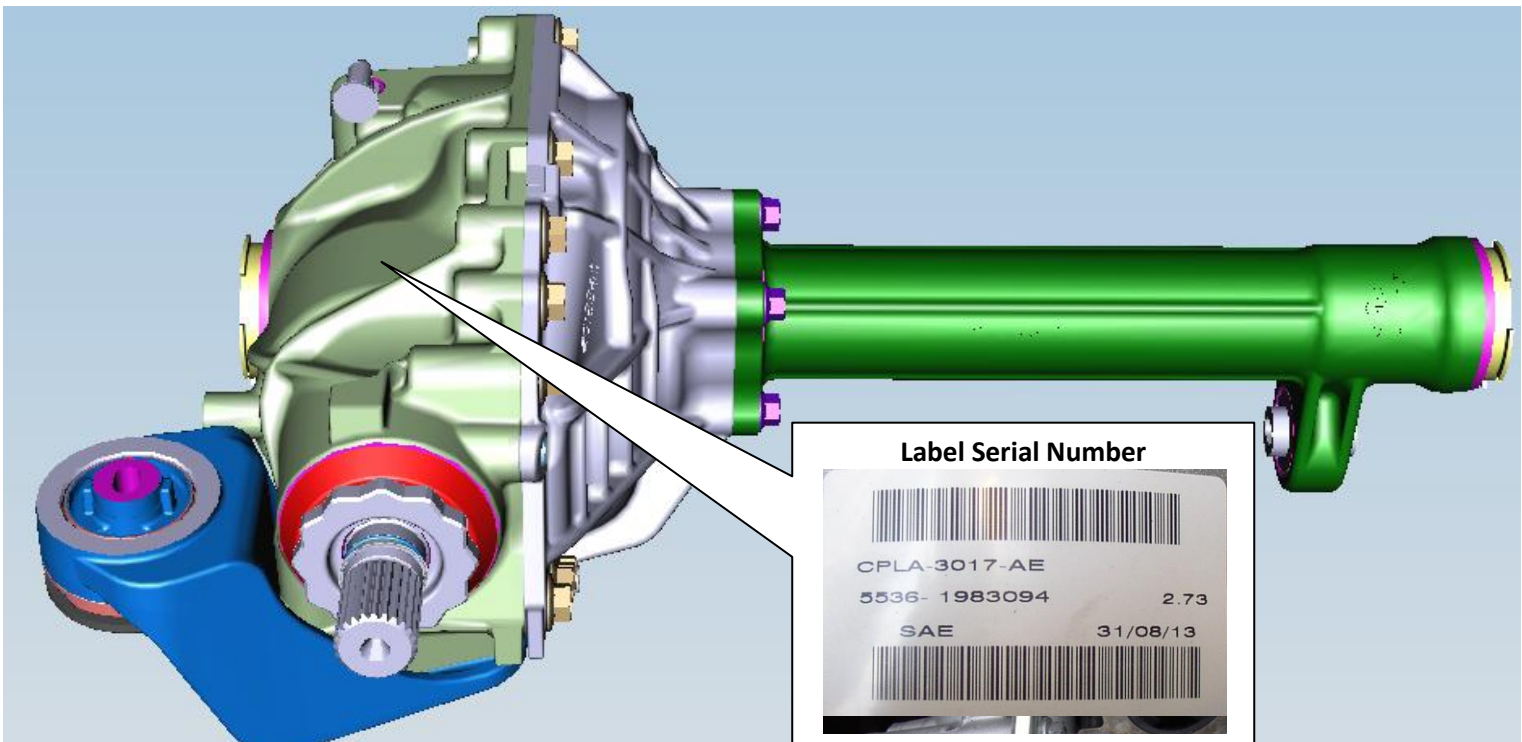
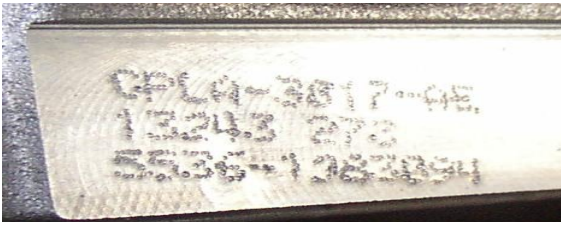


<b>Reference</b>	SSM72257
<b>Models</b>	Range Rover / L405 Range Rover Sport / L494
<b>Title</b>	Differential Axle Tube Assembly Leak/Noise
<b>Category</b>	Driveline
<b>Last modified</b>	23-Apr-2015 00:00:00
<b>Symptom</b>	509000 Axle Concerns
<b>Attachments</b>	Front Axle Serial Number Points.pdf Half shaft information.pdf Needle Roller Bearing.pdf
<b>Content</b>	<p><b><u>Issue:</u></b></p> <p>1) Oil leaking from the front differential axle tube assembly. 2) Noise evident from the front axle tube assembly.</p> <p><b><u>Cause:</u></b></p> <p>Currently under investigation.</p> <p><b><u>Action:</u></b></p> <p>If oil leaking is the issue found, please remove the axle tube assembly and confirm if the needle roller bearing is present, please refer to the attached file named needle roller bearing.</p> <p>If a noise concern is evident please take a clear photo inside the axle tube prior to removal and replacement and raise a Quality Report EPQR. A photo of the label and bearing journal on the half shaft is also requested, refer to attached file named half shaft information for examples showing detail required.</p> <p>Please retain the old axle tube assembly so that it can be returned to the supplier via PRR.</p> <p>When raising the Quality Report EPQR please make sure the serial number of the front differential is always quoted. Please refer to attached file named Front Axle Serial Number Points which details locations of the serial number.</p> <p>Part number of the axle tube assembly - LR052323</p> <p>Technicians - Please rate this SSM and provide comments so that future communications can be improved.</p> <p>1 = Poor – Basic information provided – The SSM does not help me resolve the customer concern.</p> <p>3 = Average – Adequate information provided – The SSM partially helps me resolve the customer concern.</p> <p>5 = Excellent – All required information provided to resolve the customer concern.</p>

## Front Axle Serial Number



Etch Serial Number



Label Serial Number



## Half shaft information required

Picture of label showing this information



Picture of this bearing journal

