



TECH TALK

Volume 215 - January, 2015

2015 Lancer Evolution

In This Issue

- Vehicle Technical Info..... page 1
- Training News..... Page 3
- Techline Information..... page 4
- MEDIC Information..... page 4
- Bulletin Review..... page 4

Vehicle Technical Info

GROUP 11 – Engine

INTERMITTENT ENGINE STALLING — 2014–15 Outlander. MMNA has begun an investigation into intermittent stalling on affected vehicles. If a customer reports their vehicle stalling when accelerating or decelerating, please collect the following information and contact Techline.

- Throttle input (accelerating or slowing)
- Fuel level at the time of the last event
- Brand and octane rating of the last fill up
- Time and mileage since last fill up
- Vehicle speed at the time of the event
- If a rough idle was noticed prior to the event

GROUP 31 – Wheel & Tire

CHECKING TIRE PRESSURE AT PDI — All models. MMNA would like to remind you that checking tire pressure during PDI is a simple, but very important, step in improving IQS and CSI. This is especially true of the spare tire. It is probably the most overlooked of the tires when it comes to maintaining pressure. Its location and mounting in the trunk requires the tire to be lifted, and turned over to access the valve. Please check the pressure at PDI and all service visits and make sure the spare is properly inflated. A customer having a flat tire has already been

inconvenienced. The inconvenience is made worse if the spare is flat.

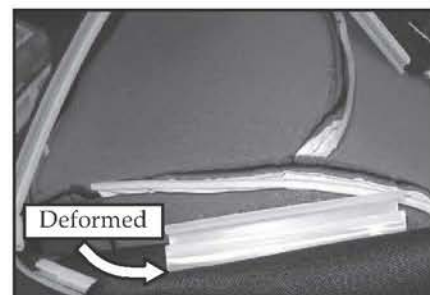
Overinflated tires can create and induce BSR, generate complaints of harsh riding, steering drift or pulling, and cause premature center tread tire wear among other conditions. Under inflated tires can lead to reports of poor fuel economy, poor tire wear, excessive tire noise, premature outside edge tire wear and can lead to tire overheating and cause a tire failure.

The correct tire inflation pressure for each model can be found on the “Tire and Loading Information” label which is usually located on the driver’s “B” pillar or driver’s door structure.

California dealers are reminded that they are required by law (<http://www.arb.ca.gov/regact/2009/tirepres09/tirefinalreg.pdf>) to check tire pressure any time a vehicle is “repaired or maintained” at their facility.

GROUP 52A – Interior

SEAT CUSHION COVER LOOSE, RETAINING CLIPS DETACHED — 2013–15 Outlander Sport/RVR. If a customer reports the seat cushion cover (seat bottom) is loose, check under the seat to see if the cover retaining strips are detached. Over time, the white plastic “J hooks” can lose their shape and become detached, causing the cover to loosen. If you find that a loose seat cushion cover is caused by detached cover retaining clips, discuss the possibility of repair with a local upholstery shop to determine if the cover can be securely reattached using “hog rings” or some other suitable retention method. Do not replace the cover unless it cannot be successfully reattached by an upholstery shop.





GROUP 52B – SRS

DTC B223D OR B1558 FOUND IN SRS-ECU MEMORY — 2011-15 Outlander Sport/RVR, 2007-15 Outlander, 2008-15 Lancer, Lancer Sportback, Lancer Evolution, 2014 Mirage. The subject DTCs are set when the occupant classification module (OCM) communicates a fault to the SRS-ECU. If you find either B223D or B1558 in SRS-ECU memory, the service manual will tell you to check the for OCM DTCs.

As the code that identifies what you diagnosed and repaired, record the OCM DTC in the “DTC” field on the “Labor” page when submitting a warranty claim. Knowing the root cause of a fault, identified in this case by the OCM DTC, helps MMNA and MMC with their investigations, which helps them quickly develop countermeasures when needed.



GROUP 54 – Chassis Electrical

MODIFICATIONS TO LANE DEPARTURE WARNING (LDW) — 2015 Outlander. In order to improve the customer’s experience of using LDW some changes have been made to the following features for the 2015 model year:

- Decreased audible/visual warning time from 10 to 3 seconds
- LDW can be set to remain in the last mode selected (ON or OFF) until manually changed
- Reduced warnings when driving on winding or narrow roads by increasing programmed lane width to 3.0 meters (9.82 ft)

Keep these changes in mind when addressing questions regarding the 2015 Outlander LDW system.



GROUP 60 – Recalls

ATIN-14-SR-011-A: OUTLANDER SPORT FRONT PASSENGER SEAT BELT LAP END ATTACHMENT FASTENER — 2013-15 Outlander Sport/RVR. ATIN-14-SR-011-A was recently sent to dealers and states:

“A safety recall campaign will be released today for the front passenger seat belt lap end attachment fastener on certain 2013 - 2015 Outlander Sport vehicles built July 20, 2012 – July 23, 2014. **Do not deliver any affected 2013 - 2015 Outlander Sport vehicles built July 20, 2012 – July 23, 2014 until this recall has been performed.** This recall campaign will be conducted in the U.S. and Canada. The Recall Bulletin outlining the repair procedure will be available today on MEDIC and MDL.

Due to a supplier error, the front passenger seat belt lap end attachment fastener may not be torqued to specification. If the tightening torque of the fastener is too low, further loosening of the fastener due to vibrations experienced while driving cannot be excluded. If this occurs, the fastener might not withstand the required loads under all circumstances, potentially resulting in insufficient front passenger occupant restraint during a crash.

Dealers are requested to torque the fastener to specification.

Notification letters will be sent to owners of affected vehicles, requesting they contact their local Authorized Mitsubishi dealership to schedule an appointment to have this recall performed.

Affected new vehicle inventory VINs can be reviewed on the Mitsubishi Dealer Link in the **Most Recent: Open Campaign List** available under the service section of “e-reports”. Dealers must review the Warranty Superscreen to confirm if any vehicles in their new or used vehicle inventories are affected, and conduct this campaign prior to delivering them. When checking for applicability of this campaign (C1416Z), please check for and complete any other open campaigns. Always get the customer’s approval before completing a campaign on a customer owned vehicle. “

IMPORTANT

Affected new or used inventory vehicles must be repaired before the vehicle is delivered. Dealers must check their inventory vehicles’ VINs on the Warranty Super Screen to verify whether the vehicle is involved in this recall campaign. It is a violation of Federal law for a dealer to deliver a new motor vehicle or any new or used item of motor vehicle equipment (including a tire) covered by the notification under a sale or lease until the defect or noncompliance is remedied.

| | |
|---|--|
| <h1 style="margin: 0;">Training News</h1> | <h2 style="margin: 0;">Technical Training Schedule January - February, 2015</h2> |
|---|--|

Always check the MDL for schedule updates. Mobile Training does not appear on these calendars. Contact your District Parts & Service Manager for information about mobile training in your area.

East Zone - N.J. Tech Training Center

East Zone - Atlanta Tech Training Center

| January | | | | | |
|---------|-------|-----|----|-----|--|
| M | T | W | Th | F | |
| 29 | 30 | 31 | 1 | 2 | |
| H | H | H | H | | |
| 5 | 6 | 7 | 8 | 9 | |
| | MEVTT | | | | |
| 12 | 13 | 14 | 15 | 16 | |
| 19 | 20 | 21 | 22 | 23 | |
| H | | AED | | | |
| 26 | 27 | 28 | 29 | 30 | |
| | EN1 | | | SP3 | |

| February | | | | | |
|----------|------|------|--------|-----|--|
| M | T | W | Th | F | |
| 26 | 27 | 28 | 29 | 30 | |
| | EN1 | | | SP3 | |
| 2 | 3 | 4 | 5 | 6 | |
| | MED2 | STV3 | ES3 | | |
| 9 | 10 | 11 | 12 | 13 | |
| 16 | 17 | 18 | 19 | 20 | |
| H | | ES3 | | | |
| 23 | 24 | 25 | 26 | 27 | |
| | MTT | | TC-SST | | |

| January | | | | | |
|---------|-------|----|------|----|--|
| M | T | W | Th | F | |
| 29 | 30 | 31 | 1 | 2 | |
| H | H | H | H | | |
| 5 | 6 | 7 | 8 | 9 | |
| | MFIT2 | | | | |
| 12 | 13 | 14 | 15 | 16 | |
| 19 | 20 | 21 | 22 | 23 | |
| H | | | CVTT | | |
| 26 | 27 | 28 | 29 | 30 | |

| February | | | | | |
|----------|----|-----|----|-------|--|
| M | T | W | Th | F | |
| 26 | 27 | 28 | 29 | 30 | |
| | | AT2 | | AT3 | |
| 2 | 3 | 4 | 5 | 6 | |
| | | ES3 | | MEVTT | |
| 9 | 10 | 11 | 12 | 13 | |
| 16 | 17 | 18 | 19 | 20 | |
| H | | AED | | | |
| 23 | 24 | 25 | 26 | 27 | |

West Zone-Dallas Tech Training Center

California Technical Training Center

| January | | | | | |
|---------|------|------|-------|-----|--|
| M | T | W | Th | F | |
| 29 | 30 | 31 | 1 | 2 | |
| H | H | H | H | | |
| 5 | 6 | 7 | 8 | 9 | |
| | | | | | |
| 12 | 13 | 14 | 15 | 16 | |
| | MED2 | STV3 | ES2 | | |
| | | AT2 | | AT3 | |
| 19 | 20 | 21 | 22 | 23 | |
| H | | MTT | | | |
| 26 | 27 | 28 | 29 | 30 | |
| | CVTT | | MEVTT | | |

| February | | | | | |
|----------|--------|-----|-------|----|--|
| M | T | W | Th | F | |
| 26 | 27 | 28 | 29 | 30 | |
| | CVTT | | MEVTT | | |
| 2 | 3 | 4 | 5 | 6 | |
| | | | | | |
| 9 | 10 | 11 | 12 | 13 | |
| | MFIT2 | | | | |
| 16 | 17 | 18 | 19 | 20 | |
| H | | EN1 | | | |
| 23 | 24 | 25 | 26 | 27 | |
| | TC-SST | | MEVTT | | |

| January | | | | | |
|---------|-----|----|--------|----|--|
| M | T | W | Th | F | |
| 29 | 30 | 31 | 1 | 2 | |
| H | H | H | H | | |
| 5 | 6 | 7 | 8 | 9 | |
| | ES3 | | TC-SST | | |
| 12 | 13 | 14 | 15 | 16 | |
| 19 | 20 | 21 | 22 | 23 | |
| H | | | | | |
| 26 | 27 | 28 | 29 | 30 | |

| February | | | | | |
|----------|----|-----|----|-----|--|
| M | T | W | Th | F | |
| 26 | 27 | 28 | 29 | 30 | |
| | | AED | | SP3 | |
| 2 | 3 | 4 | 5 | 6 | |
| | | | | | |
| 9 | 10 | 11 | 12 | 13 | |
| 16 | 17 | 18 | 19 | 20 | |
| H | | | | | |
| 23 | 24 | 25 | 26 | 27 | |

| Days | | | Code | Prerequisites | Days | | | Code | Prerequisites |
|--------------------------------------|---|-------|-----------------------------|---|------|--------|--|------|---------------|
| Automatic Transaxles | | | | | | | | | |
| 40/50 Series Diagnosis & Repair | 3 | AT2T | ATFT1 or ATFWE or ATF8 | Manual Transaxles | | | | | |
| 50 Series 5-speed Diagnosis & Repair | 1 | AT3 | AT2T | Manual Transaxles & Transfer Cases | 3 | MTT | No Prerequisites | | |
| CVT Diagnosis & Repair | 2 | CVTT | ATFT1 or ATFWE or ATF8 | Twin Clutch Sportronic Shift Transmission | 2 | TC-SST | AESP, ES1, ES2, STV3, MED2, MED3, ATFWE, MTT | | |
| Brakes | | | | | | | | | |
| Antilock Brakes | 2 | ABS2 | ES1 | Vehicle Specific | | | | | |
| Electrical Systems | | | | | | | | | |
| Electrical Systems 2 | 3 | ES2 | ES1 | Eclipse Spyder Convertible Top (Top Stack) | 1 | SP3 | No Prerequisites | | |
| Electrical Systems 3 | 2 | ES3 | ES1 | 2014 Outlander Technology | 1 | 141 | ES1, MED2, MED3, STV3 | | |
| Engine Performance | | | | | | | | | |
| Advanced Emission Diagnosis | 3 | AED | ES1, STV3, MFIT2 | Mitsubishi Electric Vehicle Technician Training | 2 | MEVTT | AESP, ES1, ES2, STV3, MED2, MED3, 120 | | |
| Engine Technology & Diagnosis | 3 | EN1 | No Prerequisites | Vehicle Diagnostics | | | | | |
| Multipoint Fuel Injection | 4 | MFIT2 | ES1, STV3 | Advanced Electronic Service Procedures | - | AESP | No Prerequisites | | |
| Heating & A/C Systems | | | | | | | | | |
| Climate Control | 2 | CC1 | MACW, ES1, MED2, MED3, STV3 | Advanced Safety & Convenience Features | 1 | ASCF | ES1, MED2, MED3, STV3 | | |
| | | | | MEDIC II | 1 | MED2 | No Prerequisites | | |
| | | | | Scan Tool Viewer (MUT-III) | 1 | STV3 | No Prerequisites | | |

NEWS:

2016 Diamond Pro Certification: With the start of the new year, it's time to think of advancing to the next level of training. MMNA will introduce new and updated training classes later in the year (an updated Manual Trans course is due during the first quarter) and those classes will be required for your 2016 certification. Think about getting scheduled early so you're not scrambling towards the end of the year after others are introduced.

