

# Initial Calibration of Compass During PDS

**Service Category** General

**Section** Pre-Delivery Service

**Market** USA

Lexus Supports  
ASE Certification 

## Applicability

| YEAR(S) | MODEL(S)             | ADDITIONAL INFORMATION |
|---------|----------------------|------------------------|
| 2016    | IS200T, IS300, IS350 |                        |

## Introduction

2016 model year IS 200t, 300, 350 vehicles are equipped with a compass in the rear view mirror. Use the following procedure to complete initial calibration of the compass during Pre-Delivery Service (PDS).

## Warranty Information

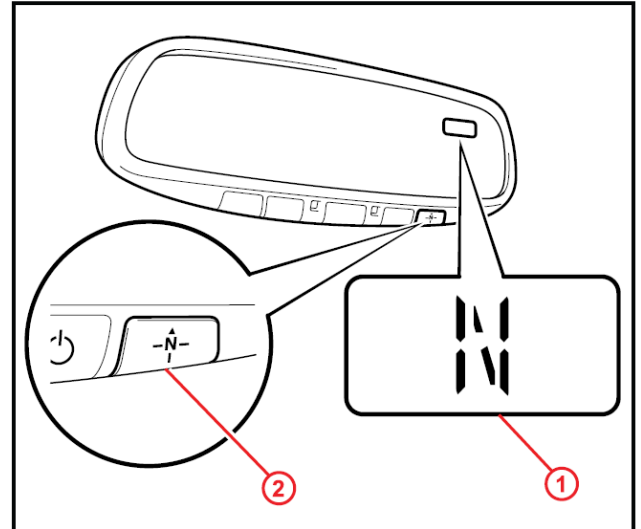
| OP CODE | DESCRIPTION                | TIME | OFF | T1 | T2 |
|---------|----------------------------|------|-----|----|----|
| N/A     | Not Applicable to Warranty | –    | –   | –  | –  |

## Initial Calibration of Compass During PDS

### Compass Calibration Procedure

1. Cycle the ignition switch to the "IG-ON" position and check that the direction (N, NE, E, SE, S, SW, W, NW) appears on the compass display.

Figure 1.



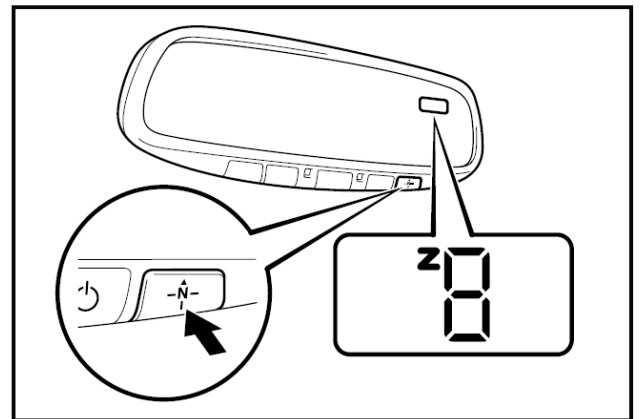
|   |                 |
|---|-----------------|
| 1 | Compass Display |
| 2 | "N" Switch      |

2. Push and hold the "N" switch for approximately 6 seconds until the zone number (1 – 15) appears on the display. Then push the switch to select the number of the zone where the vehicle is located.

**NOTE**  
Pushing the "N" switch turns the compass display ON or OFF.

See map for zone reference.

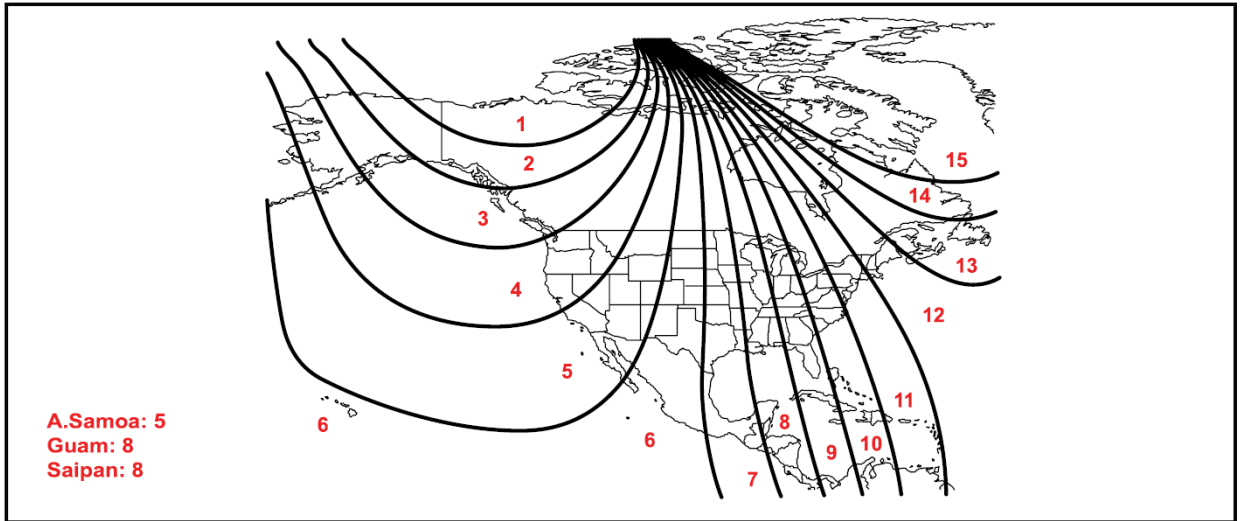
Figure 2.



## Initial Calibration of Compass During PDS

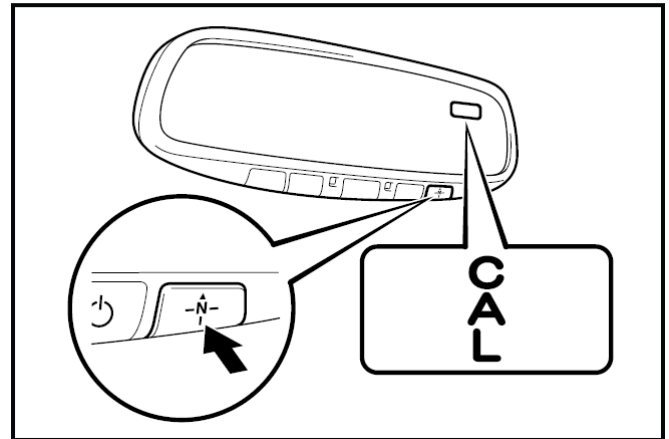
### Compass Calibration Procedure (Continued)

Figure 3.



3. Start the engine and push and hold the "N" switch for about 12 seconds until "CAL" appears on the display.

Figure 4.



## Initial Calibration of Compass During PDS

---

### Compass Calibration Procedure (Continued)

4. Drive the vehicle slowly at 5 mph (8 km/h), or less, in a circle until the direction is displayed. If there is NOT enough space to drive in a circle, drive around the block until the direction is displayed. Once the direction is shown on the display, calibration is complete.

**NOTE**

- Do NOT perform calibration of the compass in a place where the Earth's magnetic field is subject to interference (underground parking, under a steel tower, between buildings, roof parking, near a railroad crossing, near a large vehicle, etc.)
- During calibration, do NOT operate electric systems (sliding roof, power windows, etc.) as they may interfere with the calibration.

Figure 5.

