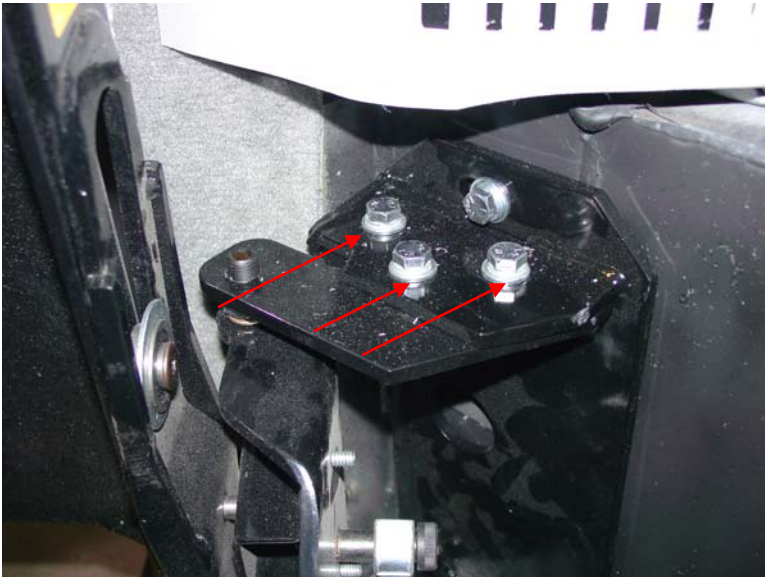


MOBILITY

Manual Ramp Adjustments, 2008 to 2015 Chrysler / Dodge American PT

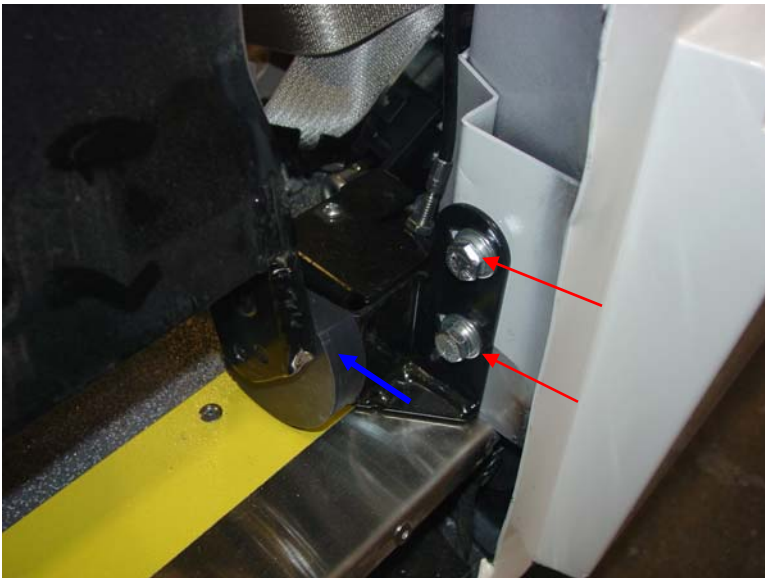
Picture 1



The EIDorado Mobility manual ramp has two adjustment points. Picture 1 shows the 1st adjustment point, which is under the C-pillar ABS cover. When these three bolts are loosened the ramp will, move forward and down, or back and up.

The second location that you have adjustment is at the b-pillar, picture 2. The only adjustment you have here is in & out, loose the two bolts and the complete latch box will move.

Picture 2



It's critical that the latch block is sitting on the threshold once adjustments are made. The latch block is referenced with a blue arrow in picture 2. If it's **not** sitting on the threshold the following issue may happen.

1: The latch block may not latch when the ramp is swung in.

2: The pin will not be properly held by the latch block when a wheelchair is on the ramp.

3: The swing out release cable will be difficult to operate.