



Service Bulletin

Dear Collins Bus Corporation Customer

Issue Date: February 9, 2015

Subject: **Diesel Fuel Vent Hose**

Models Affected: Certain Collins Bus Diesel Models with Raised and Standard floors.

Notes: This service bulletin is intended to assist Collins Bus distributors, their customers and/or service shops in the proper techniques for repair and maintenance. Issues described in this bulletin may not apply to all Collins Bus units. Authorized technicians will be able to decide whether or not a unit with similar issues will benefit from the provided information.

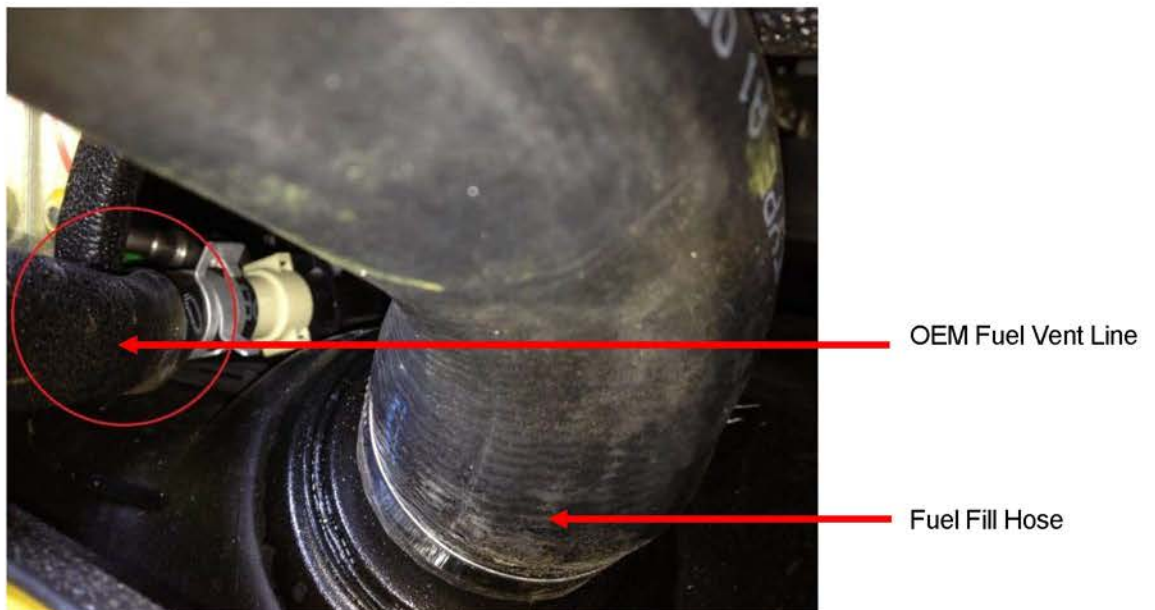
Details: Information contained in this bulletin will help you determine and repair potential issues with the Diesel Fuel Vent Hose on certain Collins Bus diesel engine models with a raised floor or standard floor. Please follow the instructions provided with each picture for details on this potential issue and suggested repair.

Issue: The OEM fuel vent hose may have been kinked during routing not allowing the vehicle to accept fuel.

Tools needed: 5/16" socket or 5/16" wrench.

Location: Driver side attached to top of the fuel tank.

Figure 1-A



1. Begin by inspecting the Fuel Vent Hose as it passes through the seat beam opening. Inspection may be done from under the unit looking at the top of the fuel tank. A visual inspection may be done by looking over the rear axle following the driver side frame rail.
NOTE: View in picture is driver side looking in towards center of unit with no skirt condenser installed.

Figure 1-B



Make sure pinch weld covers all metal edges.

Fuel Vent Line Circled

Fuel Fill Hose

Note: Work can be done without dropping the fuel tank.

2. Replace the OEM hose with the supplied formed fuel vent hose. Remove by squeezing the locking ring while simultaneously pulling the hose off of vent tube.
Location: Driver side attached to top of the fuel tank.

Figure 2-A



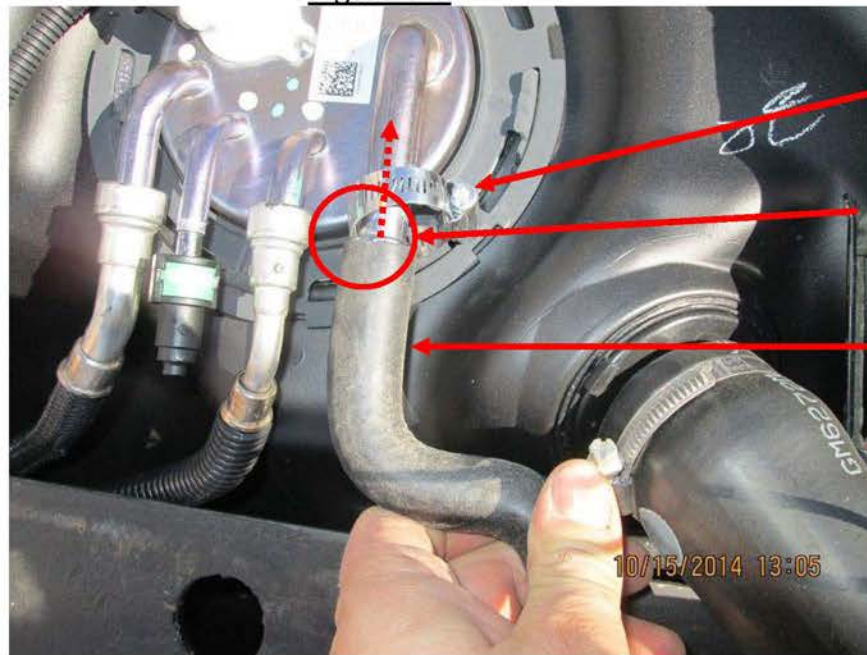
Note: Fuel Fill Hose may have to be removed to access vent hose thru seat beam opening.

Figure 2-B



3. Place the supplied worm gear clamp and formed vent hose over vent tube. Slide the formed vent hose onto the tube so that it extends 1" past the formed metal rib on the tube.
Location: Driver side attached to top of the fuel tank.

Figure 3-A



Worm gear clamp

Note: Formed vent hose needs to go 1" past formed metal rib (circled).

Formed vent hose

4. Tighten the supplied worm gear clamp securing the formed vent hose to 25-38 in-lbs.
Location: Driver side attached to top of the fuel tank.

Figure 3-B



The clamp and hose needs to be 1" past the metal rib to ensure hose does not slip off.

5/16" socket

Worm gear clamp
Tighten to 25-38 in-lbs.

Formed metal rib (circled).

Time Allowed inspecting Fuel Vent Hose.
15 Mins per Unit

Time Allowed to replace OEM fuel vent hose with new formed fuel vent hose.
45 Mins per Unit

We regret the inconvenience this service may cause you. Please be assured that Collins Bus Corporation is striving to build our buses with the best value and safety available. Thank you for your cooperation in this matter. If you have questions about anything contained in this bulletin please contact

Ginger Markus,
(Customer Service Coordinator for Collins Bus)
1-800-533-1850 ext 424

Randy Keesling,
(Customer Service Coordinator for Collins Bus)
1-800-533-1850 ext 414

Sincerely,
COLLINS BUS CORPORATION