

# EZ Loader Boat Trailers

29 July 2015

---

## Repair Guide

---

**Subject:** Stainless steel seal sleeve replacement for 5500# 6 lug axles

Guidelines for replacement of the stainless steel seal sleeve and o-ring. Installation requires the use of red, high temperature RTV Silicone Sealer between the seal sleeve and the spindle.

Remove the existing stainless steel seal sleeve being careful not to damage the spindle surface. Remove the o-ring and clean the spindle surface of any foreign material where the existing stainless steel seal ring was installed. Ensure that the o-ring groove is also free of foreign material.

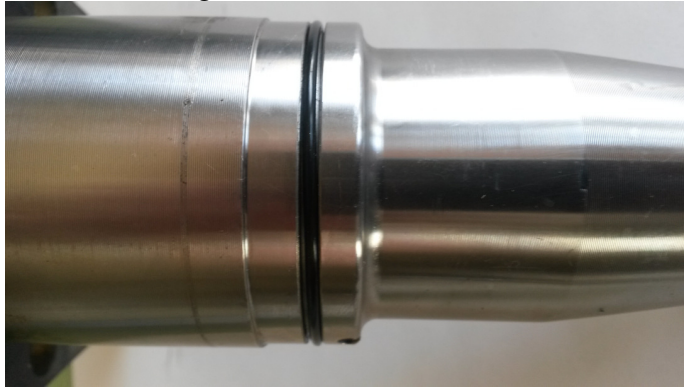
A Special tool will be required to install the new stainless steel seal sleeve. The tool for installing the new seal sleeve will be made available for use by EZ Loader Spokane.

Reassembling the stainless steel seal sleeve.

- 1) Clean spindle and o-ring groove of any foreign matter.



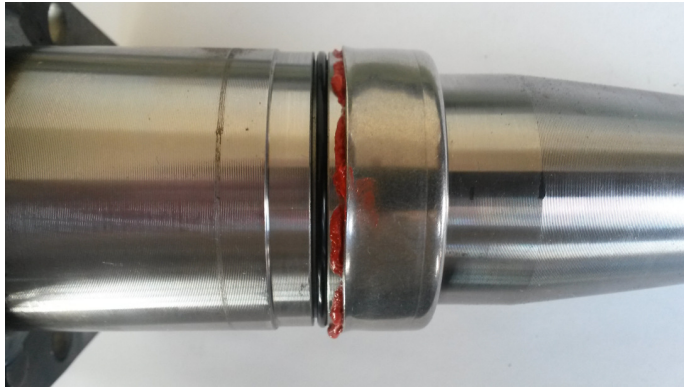
- 2) Install new o-ring.



- 3) Apply liberal amount of high temperature red RTV silicone sealer to spindle seal sleeve journal surface.



- 4) Press new stainless steel seal sleeve on to spindle with fingers until squarely seated.



- 5) Use installation tool and hammer to drive stainless steel seal sleeve into position ensuring that stainless steel seal sleeve is not crooked on spindle.



- 6) Wipe excess RTV silicone from all surfaces.



- 7) Reassemble hubs onto axle and fill with SAE 80w-90 gear oil until 2/3 full on sight glass lens (approximately 4 oz).

