 HYUNDAI NEW THINKING. NEW POSSIBILITIES. Technical Service Bulletin	GROUP FUEL SYSTEM	NUMBER 14-FL-003
	DATE JULY, 2014	MODEL(S) VELOSTER (FS)
SUBJECT: 2012 VELOSTER ECM UPDATE		



ECU Update

Description:

This bulletin provides information related to the ECM software update on certain 2012MY VELOSTER (FS) 1.6L manual transmission vehicles to update the following vehicle conditions:

- P0191 : Fuel Rail Pressure Sensor Circuit Range/Performance.
- P061B : Internal Control Module Torque Calculation Performance.
- P0456 : Evaporative Emission System-Leak detected (very small leak).
- P2188 : Fuel System Too Rich - At Idle (Bank 1).
- Up shift indicator display stays on in 4th gear in certain vehicles.

Applicable Vehicles: Certain 2012 MY VELOSTER (FS) with 1.6L GDI engine and manual transmission.

GDS Information:

Event #	Description
Event #257 (or later compatible event)*	FS M/T P0191 DCT logic Improvement.

* The latest event that appears in the ECM Auto Mode event list for the particular vehicle.

Warranty Information:

Model	Op. Code	Operation	Op. Time	Causal P/N	Nature Code	Cause Code
FS	39110FA3	ECM Upgrade	0.3 M/H	39110-2BBF0 39110-2BBF3	N69	C40

NOTE: Use the applicable ECM P/N listed in the ROM ID Information Table from the following page.

NOTICE

In event of Auto Mode ECU Update failure:

- You must attempt **Manual Mode**. Use the ECM P/N from the vehicle's ECM label if it is not clear from the ROM ID table as to the correct ECM P/N to use for your vehicle.
- Replacing an ECM without carefully documenting that a **Manual Mode** update attempt was made will result in claims charge back.

Circulate To: General Manager, Service Manager, Parts Manager, Warranty Manager, Service Advisors, Technicians, Body Shop Manager, Fleet Repair

SUBJECT: 2012 VELOSTER ECM UPDATE

ROM ID Information Table:

ECM Part #	T/M	IMMO	ROM ID	
			Previous	New
39110-2BBF3	M/T	NO (Key Start)	GGFS-BFU6ES00600 GGFS-BFU6ES01600 GGFS-BFU6ES02600 GGFS-BFU6ES03600	GGFS-BFU6ES04600
39110-2BBF0		YES (Push Button Start)	GGFS-BFU6ES00600 GGFS-BFU6ES01600 GGFS-BFU6ES02600 GGFS-BFU6ES03600	GGFS-BFU6FS04600

NOTE: Verify the ECM ROM ID before updating the vehicle's software.

General Precautions:

- Connect the USB cable between the GDS and the VCI.
- Connect the 16-pin DLC connector from the VCI into the DLC located under the driver's side dash.



NOTICE

Make sure the battery icon at the bottom right of the GDS laptop shows at least 50%; if not, charge the GDS or attach a battery charger.

- Turn off all lights (Do not leave the headlight switch in auto mode) and all accessories (including heater/air conditioner/fan, audio, heated seats, rear defroster, etc.) to ensure the battery will not be discharged during the update.
- Perform the update with the ignition key in the ON position.
- Do not disconnect any cables connected to the vehicle or the GDS during the update.
- Do not start the engine or turn the ignition switch OFF during the update.

NOTICE

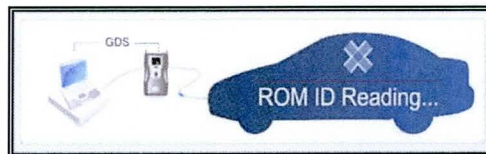
Confirm your GDS has the most recent version. If not, connect the GDS to an Internet port, open the GDS home page and select "Update". Refer to instructions on hmaservice.com if necessary.

If you encounter GDS related problems, call the GIT Helpline at 888-437-0308.

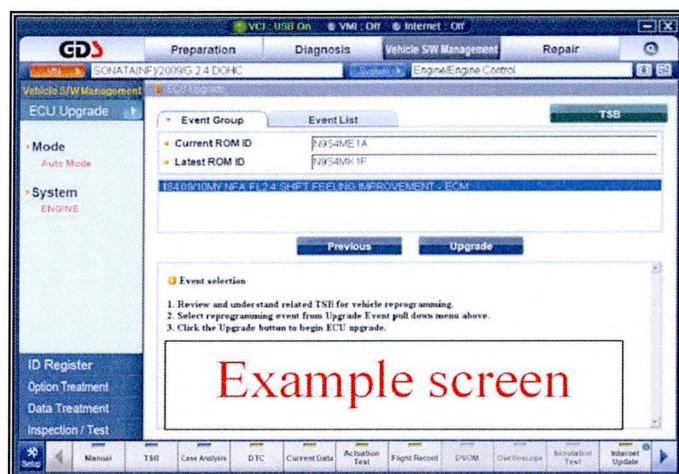
Service Procedure:

GDS Auto Mode ECU Update Procedure

1. From the GDS home page, select **ECU Upgrade**. If necessary, select the VIN.
2. Select **Engine** as the system and then select **OK**.
3. Select **Auto Mode** and then select **Next**.
4. From the **System** tab, select **Engine** and then select **OK**. The GDS will read the ROM ID. Confirm the ROM is applicable as shown on Page 2, "ROM ID Information".



5. Select update event as listed on the **GDS Event list of page-1**. Select **Upgrade**.



6. If the screen indicates "**Voltage is OK**" (voltage > 12volts), select **OK**. If not, select **CANCEL** and charge the vehicle battery by running the engine for 10 minutes.
7. Updating will occur until 100% is reached on the bar graph. At the prompt, turn the ignition key off for 10 seconds then turn it on and select **OK**.
8. The GDS will confirm that ECM reprogramming is successfully finished. Select **OK**.
9. If the ECM update was not successful, go to **GDS Manual Mode ECM update Procedure**.
10. Check for DTC in all systems and Erase All DTC that stored due to loss of CAN communication during the ECM Update.
11. Turn **Off ignition 10 seconds** then turn **On** before going to engine start
12. Start the engine to confirm proper operation.
13. Clear DTC in the BlueLink system per instructions of TSB 12-BE-005-2.

GDS Manual Mode ECU Update Procedure**NOTICE**

- GDS Manual Mode is intended for recovery of an ECM Update should it begin but then later fail in process in the Auto Mode.
- The ECM connectors must be disconnected for 15 minutes to reset its contents then perform this Manual Mode Update.
- Do not force Manual Mode if you get an error in Auto Mode that the vehicle's current ROM ID did not apply.
- It is critical to identify the correct ECM Part Number in the PASSWORD table or the ECM may be permanently damaged. It is recommended to remove ECM and read the part number from the label to confirm.

1. From the GDS home page, select **ECU Upgrade**. If necessary, select the VIN.
2. Select **Engine** as the system and then select **OK**.
3. Select **Manual Mode** and then select Next.
4. From the **System** tab, select **Engine** and then select **OK**.
5. Select update event as per the **GDS Event List of page-1**, then select **Upgrade**.
6. Be certain to enter the exact appropriate password from the table on the next page and select **OK**. **See the important NOTE above.**
7. The remaining steps are same as Steps 6~13 of the **Auto Procedure**.

MENU	PASSWORD	Comments
FS 1.6 MT IMMO : 39110-2BBF0	1020	Push Button Start
FS 1.6 MT NON IMMO : 39110-2BBF3	1023	Key Start