

TECHNICAL BULLETIN
Q425NAS3
14 NOV 2014



© Jaguar Land Rover North America, LLC

NOTE: The information in Technical Bulletins is intended for use by trained, professional Technicians with the knowledge, tools, and equipment required to do the job properly and safely. It informs these Technicians of conditions that may occur on some vehicles, or provides information that could assist in proper vehicle service. The procedures should not be performed by 'do-it-yourselfers'. If you are not a Retailer, do not assume that a condition described affects your vehicle. Contact an authorized Land Rover service facility to determine whether this bulletin applies to a specific vehicle.

Changes are highlighted in gray

SECTION: 307-01

Service Action: 9 Speed Automatic Transmission Calibration

AFFECTED VEHICLE RANGE:

Range Rover Evoque (LV)

Model Year: 2014-2015
VIN: EH815019-FH974024

MARKETS:

NAS

CONDITION SUMMARY:

This Service Action is reinstated with immediate; refer to SSM72070 for further information.

Situation: A potential issue has been identified on a limited number of 2014-2015 model year Range Rover Evoque (L538) vehicles where one or more of the following may be exhibited:

- Poor transmission shift quality;
- Warning message (Transmission issue);
- Lack of power; and/or
- Unable to select Drive (D) or Reverse (R) when the vehicle is in Park (P).

Action: Retailers are required to **HOLD** only affected vehicles that are within your control and refrain from releasing the vehicles for new or used vehicle sale pending completion of the rework action detailed in this Technical Bulletin. Unsold vehicles should have this performed as part of the Pre-Delivery Inspection (PDI) process but **must** have it completed prior to vehicle handover to the customer. Affected vehicles already in the hands of customers should be updated at the next available opportunity.

PARTS:

No parts required

SPECIAL TOOLS:



NOTE: This document is an 'Active Bulletin' that will display a functional programming shortcut if accessed within a diagnostic session using SDD.

SDD with latest SDD-DVD and Calibration File; first available on **DVD139.10 v.193**

Jaguar Land Rover-approved Midtronics Battery Power Supply

WARRANTY:



NOTE: Check DDW to ensure that a vehicle is affected by this program prior to undertaking any rework action. Repair procedures are under constant review, and therefore times / prices are subject to change; those quoted here must be taken as guidance only. Refer to TOPIx to obtain the latest repair time. At the time of confirming a booking for vehicle repair, ensure that all outstanding Service Actions are identified to ensure the correct parts are available and adequate workshop time is allocated for repairs to be completed at one visit.


Warranty claims must be submitted quoting Program Code 'Q425' together with the relevant Option Code from the table. The SRO and part information listed have been included for information only. The Option Code(s) that allows for the drive in / drive out allowance may only be claimed if the vehicle is brought into the workshop for this action alone to be undertaken.

This program is valid for a limited time only. Warranty claims with a repair date prior to the **31 October 2016** closure date must be submitted for payment within 30 calendar days of completion of the repair.

PROGRAM CODE	OPTION CODE	DESCRIPTION	SRO	TIME (HOURS)	PARTS / SUNDRY CODE	QTY. / VALUE
Q425	B	Configure transmission control module	44.90.07	0.20	-	-
Q425	C	Configure transmission control module Drive in/drive out	44.90.07 02.02.02	0.20 0.20	- -	- -

Normal Warranty policies and procedures apply

SERVICE INSTRUCTION:

-  **CAUTION: Failure to correctly follow the instructions below could lead to serious mechanical failure of the transmission.**

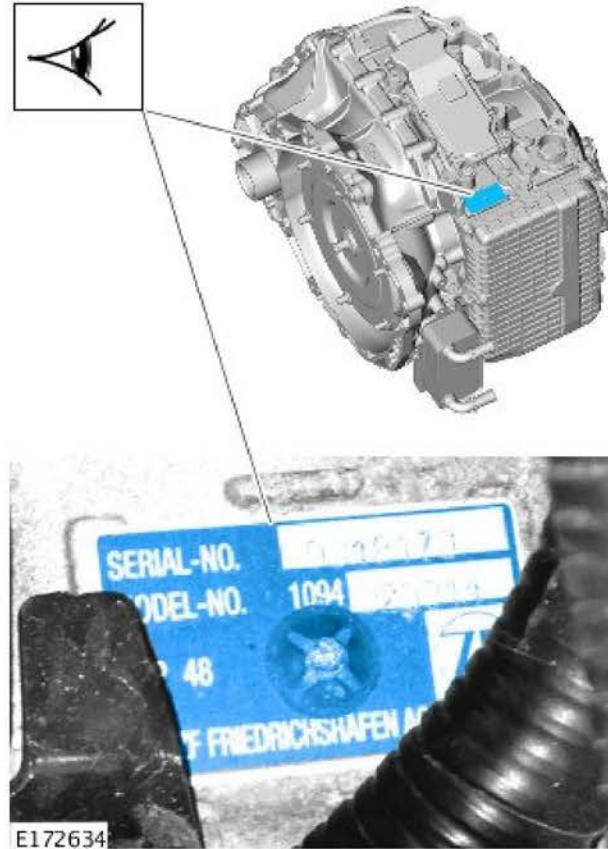


NOTE: Parts shown removed for clarity.



NOTE: During the software update, SDD will prompt you for the transmission serial number. This can be found by looking between the engine and the air filter housing (a lamp may be required for this operation).

Using a suitable lamp, note the transmission serial number on the repair order.



⚠ CAUTION: A Jaguar Land Rover-approved Midtronics battery power supply must be connected to the vehicle battery during SDD diagnosis / module programming.

⚠ CAUTION: Ensure all ignition 'ON' / ignition 'OFF' requests are carried out; failure to perform these steps may cause damage to control modules in the vehicle.

△ NOTE: SDD must be loaded with DVD139.10 v.193 or later.

2. Connect the Jaguar Land Rover-approved Midtronics battery power supply to the vehicle battery.
3. Turn ignition 'ON' (engine not running).
4. Connect the Symptom Driven Diagnostics (SDD) system to the vehicle and begin a new session.
5. Follow the on-screen prompts, allowing SDD to read the VIN and identify the vehicle and initiating the data collect sequence.

6. Select 'Diagnosis' from the Session Type screen.
7. Select the 'Selected Symptoms' tab, and then select the following:
 - Powertrain > Automatic transmission and transaxle > Automatic transmission and transaxle symptoms
8. Read and close any publication from the list of recommended candidates to expose the 'Extras' tab.
9. Select the 'Extras' tab.
10. From the Recommendations tab, select **Run** to perform the 'Configure existing module - Transmission control module' option.
11. Follow all on-screen instructions to complete this task, ensuring all DTCs are cleared.
12. Exit the current session.
13. Disconnect the SDD and the battery power supply from the vehicle.