

© 2014 Mazda Motor of America, Inc.

Subject: LIFTGATE OPENER SWITCH INOPERATIVE	Bulletin No: 09-035/14
	Last Issued: 08/29/2014

BULLETIN NOTE

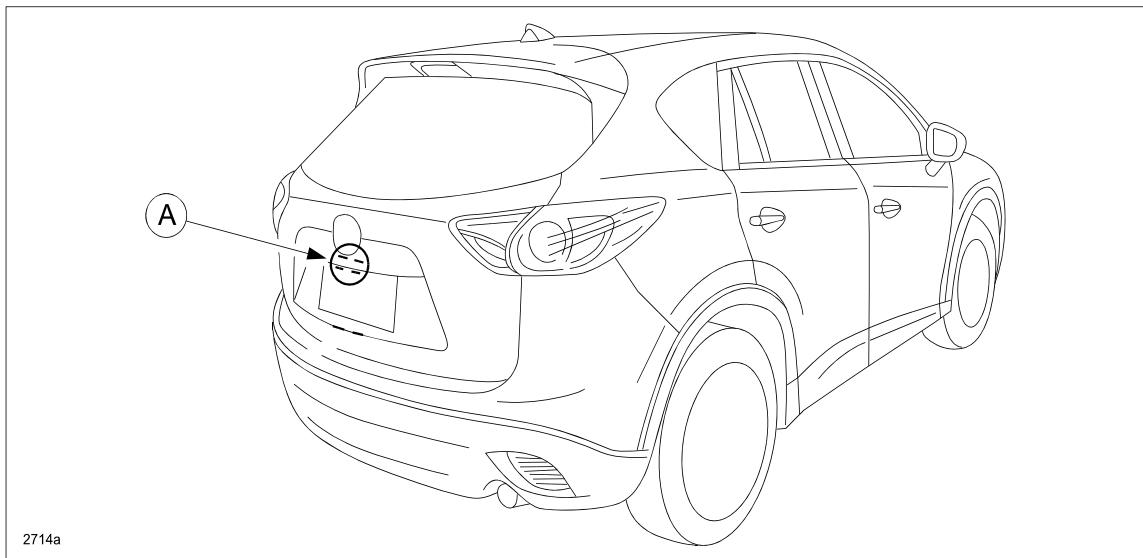
- This bulletin supersedes the previous bulletin 09-037/12 issued on 08/31/12. The APPLICABLE MODEL(S)/VINS, DESCRIPTION, REPAIR PROCEDURE, PART(S) and WARRANTY INFORMATION have been revised.
- Changes are noted below in Red beside the change bar.

APPLICABLE MODEL(S)/VINS

2013-2014 CX-5 vehicles with VINs lower than JM3KE*****398857 (produced before Oct. 2, 2013)

DESCRIPTION

Some vehicles may have a liftgate that does not open when the liftgate opener switch (A) is pressed.



This concern may be due to water entry into the liftgate opener switch connector during a car wash or by other means of condensation. The connector terminals may then become corroded.

Customers having this concern should have their vehicle repaired using the following repair procedure.

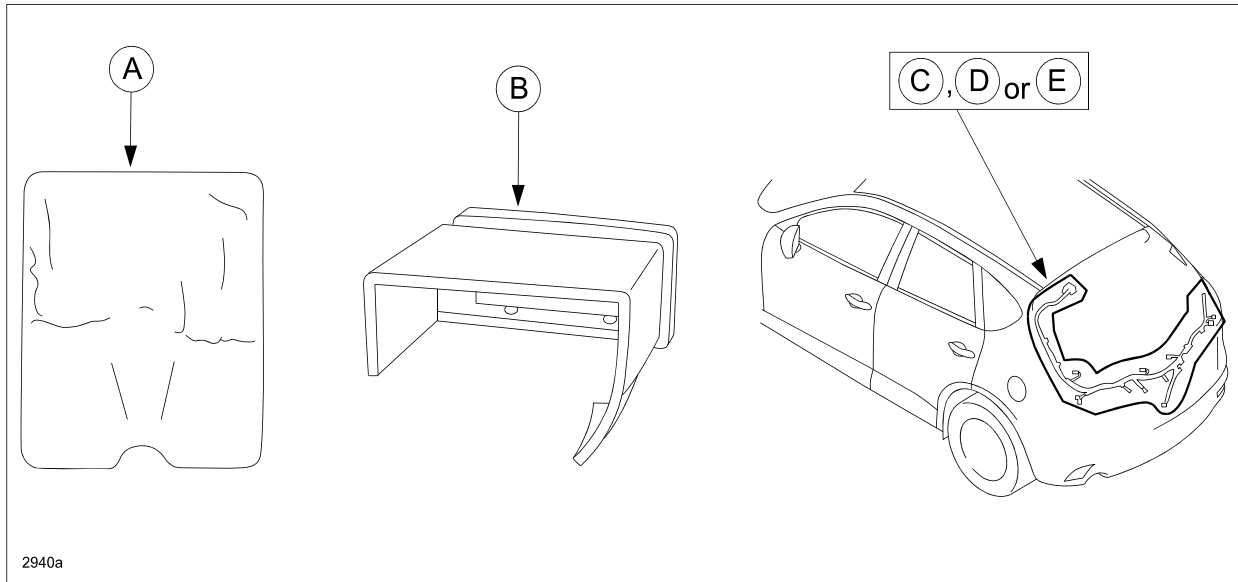
Mass-Production Change Overview:

The following three (3) mass-production changes have been made (at various times), to eliminate this concern:

- 1) A water-proof sheet (A) was installed to cover the liftgate opener switch and protect it from water intrusion.
- 2) For increased protection, the water-proof sheet was later replaced by a water-proof protector (B).
- 3) The shape of the rear harness No. 2 (C, D or E) was modified for additional corrosion protection.

NOTE:

- There are three (3) different rear harness No. 2 part numbers (KD33, KD37 and KD45 type).
- Check the GEPC for the correct rear harness type for the subject vehicle.
- Harnesses ending with a “C” suffix are the new (modified) parts.
- The water-proof protector can ONLY be installed on a new “C” suffix harness.
- The water-proof protector is NOT compatible with an old “B” suffix harness.



2940a

The subject vehicle may have a combination of modified and non-modified parts installed depending on the VIN and built date of the vehicle. Use the tables below to identify what parts are installed on the subject vehicle.

- **Determine if the subject vehicle is a Vehicle X, Y or Z, then follow the appropriate repair procedures.**

Item	Subject Vehicles (X, Y and Z)			Modified Vehicle
	Vehicle X	Vehicle Y	Vehicle Z	---
(A) Water Proof Sheet	Not Equipped	Equipped	Equipped	Not Equipped
(B) Water Proof Protector	Not Equipped	Not Equipped	Not Equipped	Equipped
(C) Rear Harness No. 2	Old Type	Old Type	New Type	New Type

NOTE: This bulletin does not apply to vehicles built on or after Oct. 2, 2013 (with VINs of JM3KE*****398857 or higher). These are considered Modified Vehicles and are already equipped with a modified rear harness No. 2 and a water-proof protector; no repairs are needed on Modified Vehicles.

Mass-Production Change Overview (Cont.):

(A) WATER-PROOF SHEET (BC1B-58-862)			
VIN Range: (JM3KE*****)	100001 to 119967	119968 to 398856	398857 or higher
Build Date Range	---	4/17/12 to 10/01/13	---
	Not Equipped	Equipped	Not Equipped

(B) WATER-PROOF PROTECTOR (KD53-62-4B2)		
VIN Range: (JM3KE*****)	100001 to 398856	398857 or higher
Build Date Range	---	10/02/13 or after
	Not Equipped	Equipped

(C) REAR HARNESS (KD33 TYPE)		
VIN Range: (JM3KE*****)	100001 to 377775	377776 or higher
Build Date Range	12/15/11 to 07/26/13	07/27/13 or after
Part Number	KD33-67-060B (old)	KD33-67-060C (new)

(D) REAR HARNESS (KD37 TYPE)		
VIN Range: (JM3KE*****)	100001 to 377775	377776 or higher
Build Date Range	12/15/11 to 07/26/13	07/27/13 or after
Part Number	KD37-67-060B (old)	KD37-67-060C (new)

(E) REAR HARNESS (KD45 TYPE)		
VIN Range: (JM3KE*****)	100001 to 375263	375264 or higher
Build Date Range	12/15/11 to 07/21/13	07/22/13 or after
Part Number	KD45-67-060B (old)	KD45-67-060C (new)

REPAIR PROCEDURE

- **After determining the subject vehicle (ex. Vehicle X, Y or Z), refer to the tables below and perform the appropriate inspection and repairs.**

ITEM	PART	VEHICLE X	VEHICLE Y	VEHICLE Z
Inspection of Rust Condition at connector terminals		(*) (Perform Inspection A)		

ITEM	PART	VEHICLE X	VEHICLE Y	VEHICLE Z
(*) RUST is found at the connector terminals	Opener Switch	(Perform Procedure B) Replace opener switch with a new one		
	Rear Harness No. 2	(Perform Procedure C) Replace the rear harness No. 2 with a modified one		(Perform Procedure C) Replace with a new modified part
	Water Proof Protector	(Perform Procedure E) Install a new water-proof protector	(Perform Procedure E) Remove the old water-proof sheet and install a water-proof protector	

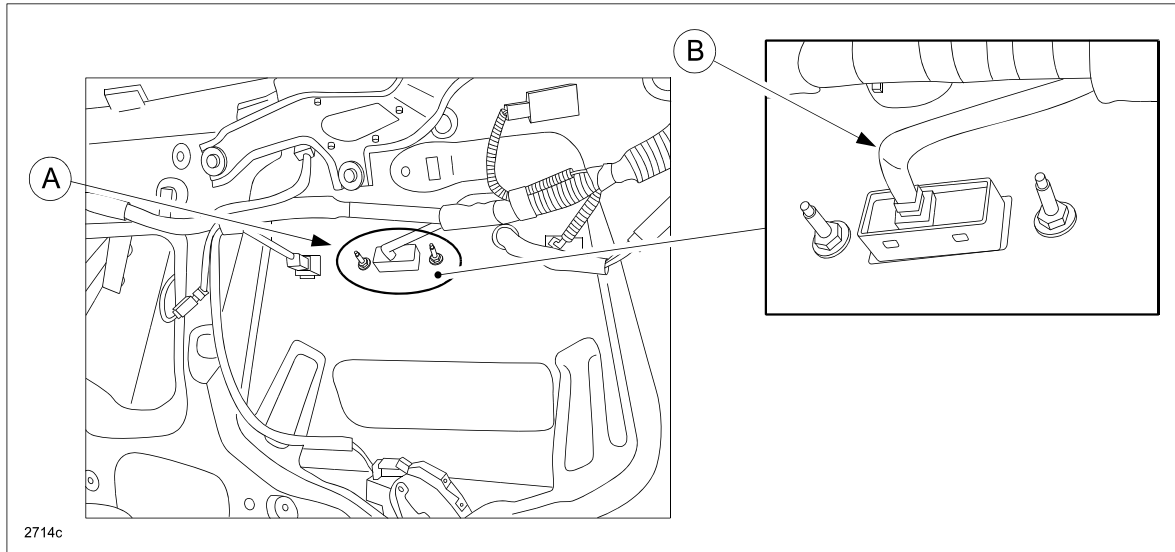
ITEM	PART	VEHICLE X	VEHICLE Y	VEHICLE Z
(*) RUST is NOT found at the connector terminals	Opener Switch	(Perform Procedure B) Replace opener switch with a new one		
	Rear Harness No. 2	DO NOT replace rear harness No. 2		
	Water Proof Protector	(Perform Procedure D) Install a new water-proof sheet	(Perform Procedure D) Remove the old water-proof sheet and install a new one	(Perform Procedure E) Remove the old water-proof sheet and install a water-proof protector

NOTE:

- (*) Inspect for rust occurrence at the connector terminals according to Inspection A.
- A water-proof protector CANNOT be installed to an old rear harness No. 2.

**INSPECTION A. INSPECTION OF RUST OCCURRENCE AT CONNECTOR TERMINALS:
(For All Vehicles X, Y and Z)**

1. Remove the liftgate trim according to the MS3 on-line instructions or Workshop Manual (section 09-17 LIFT-GATE LOWER TRIM REMOVAL/INSTALLATION).
2. Disconnect the connector from the liftgate opener switch.
3. Inspect for water intrusion and rust/corrosion on the terminals of the liftgate opener switch connector (A) and the Rear Harness No. 2 (B).

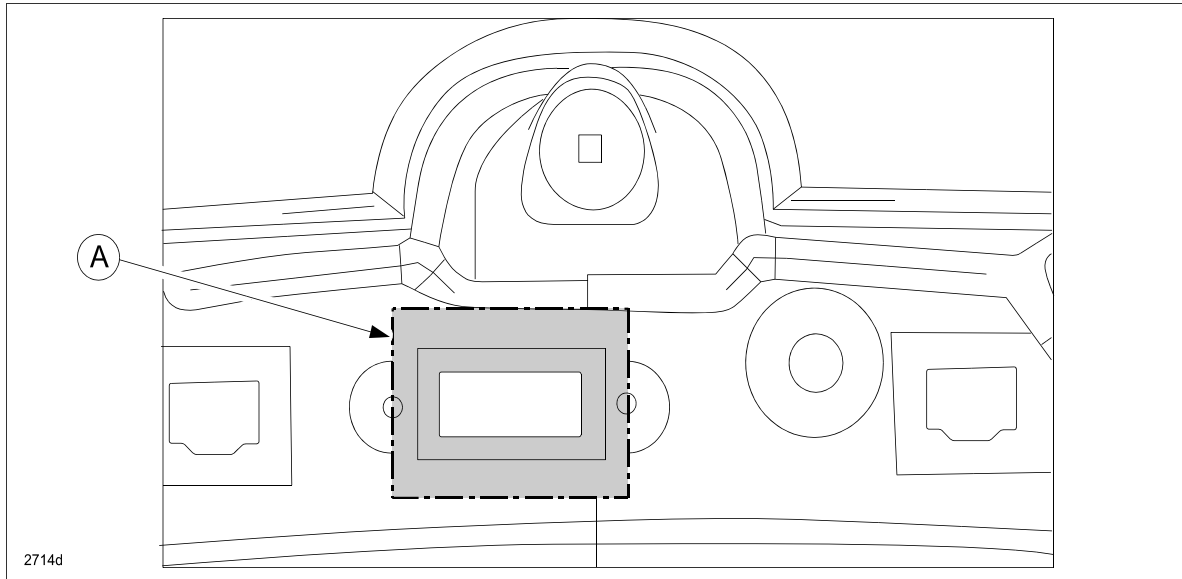


4. **For All Vehicles X, Y and Z (regardless of rust occurrence),** proceed to REPAIR PROCEDURE B. OPENER SWITCH REPLACEMENT.

REPAIR PROCEDURE B. OPENER SWITCH REPLACEMENT:

(For All Vehicles X, Y and Z regardless of rust occurrence)

1. Remove the liftgate opener switch according to the MS3 on-line instructions or Workshop Manual (section 09-14 LIFTGATE OPENER SWITCH REMOVAL/INSTALLATION).
2. Degrease the liftgate panel around the area (A) where the liftgate opener switch is installed.



3. Install a new liftgate opener switch.
4. **For Vehicles X, Y and Z (WITH rust occurrence),** proceed to REPAIR PROCEDURE C. REPLACEMENT OF REAR HARNESS NO. 2.

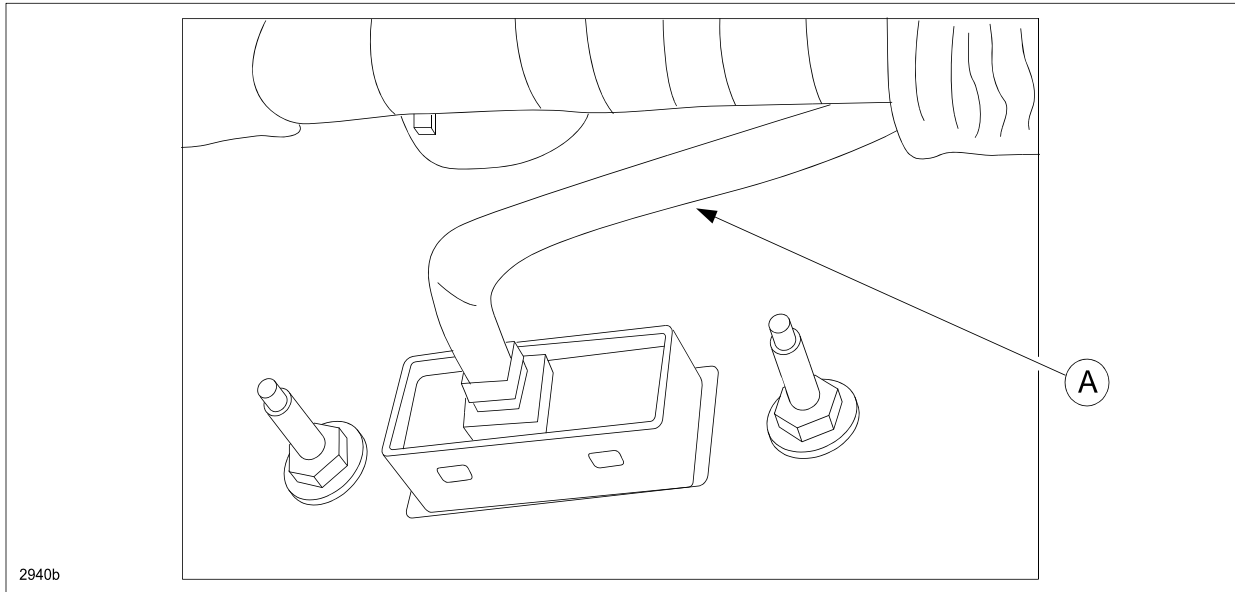
REPAIR PROCEDURE C. REPLACEMENT OF REAR HARNESS NO. 2:

(For Vehicles X, Y and Z, WITH rust occurrence)

1. Replace rear harness No. 2 (A) with a new (modified) part.

NOTE:

- There are three (3) different rear harness No. 2 part numbers (KD33, KD37 and KD45 type).
- Check the GEPC for the correct harness type for the subject vehicle.
- The parts with a "C" suffix are the new (modified) parts.

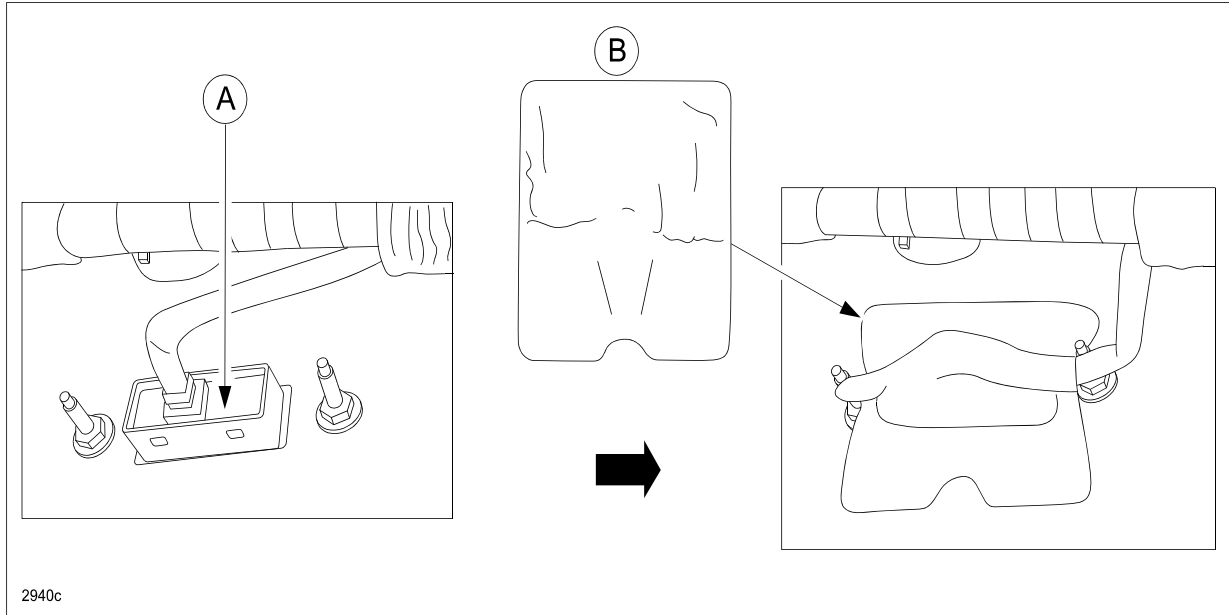


2. **For Vehicles X and Y (with NO rust occurrence),** proceed to REPAIR PROCEDURE D. INSTALLATION OF WATER-PROOF SHEET.

REPAIR PROCEDURE D. INSTALLATION OF WATER-PROOF SHEET:

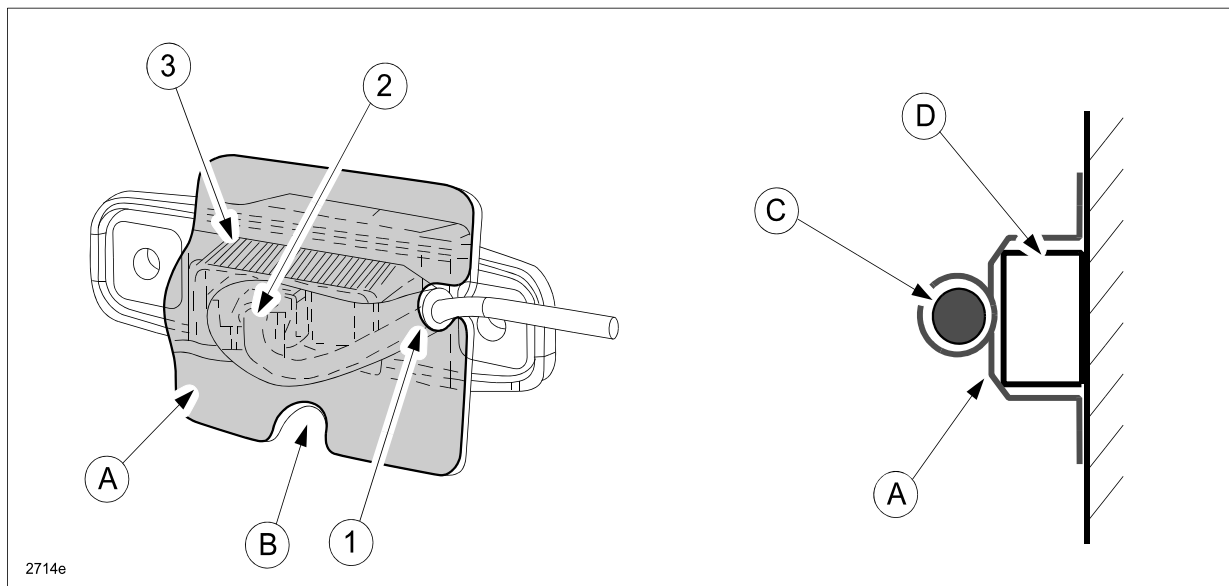
(For Vehicles X and Y with NO rust occurrence)

1. (For Vehicle Y only): Remove and discard the old water-proof sheet (B).
2. Attach the new water-proof sheet (B) over the liftgate opener switch (A) as shown below.

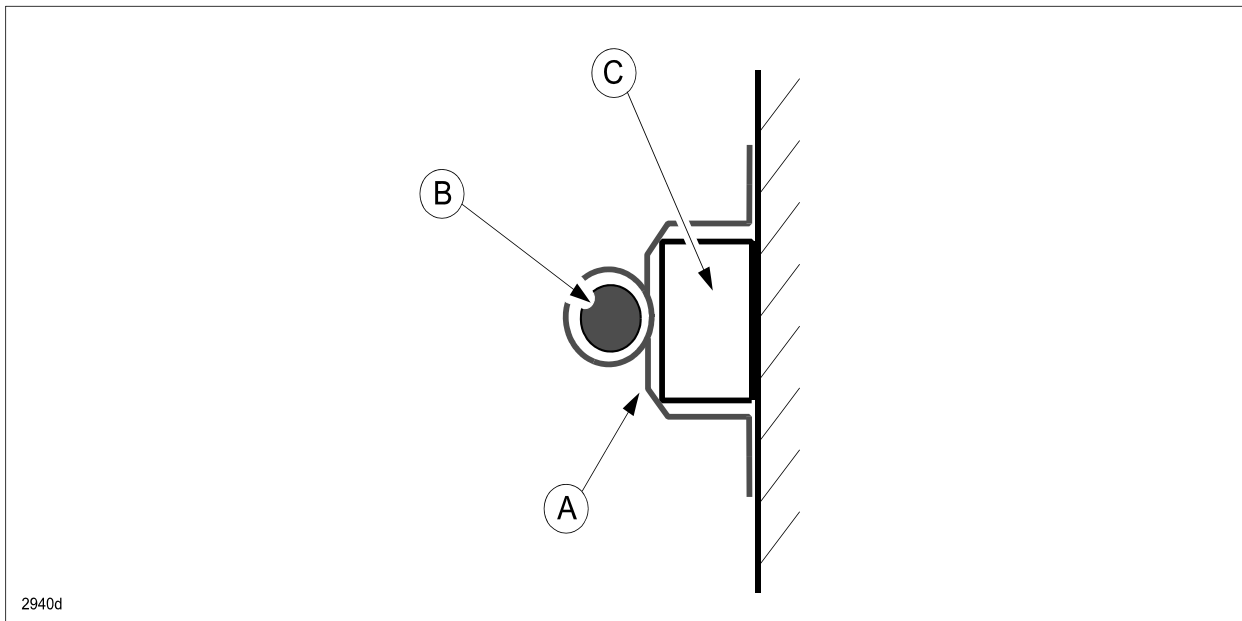


3. Attach the water-proof sheet (A) with the cut-out (B) facing downward and in the order shown below (1,2,3).

- (1) Attach the water-proof sheet all around the harness (C) by pinching and pressing until all gaps/clearances are gone. If there are any gaps/clearances, water may flow into the connector along the harness.
- (2) Cover the connectors tightly with the water-proof sheet.
- (3) Attach the sheet at the upper and lower part of the switch (D).



4. Knead the water-proof sheet (A) with fingers so the sheet adheres to the harness (B) and switch (C) without any clearances to avoid water intrusion.



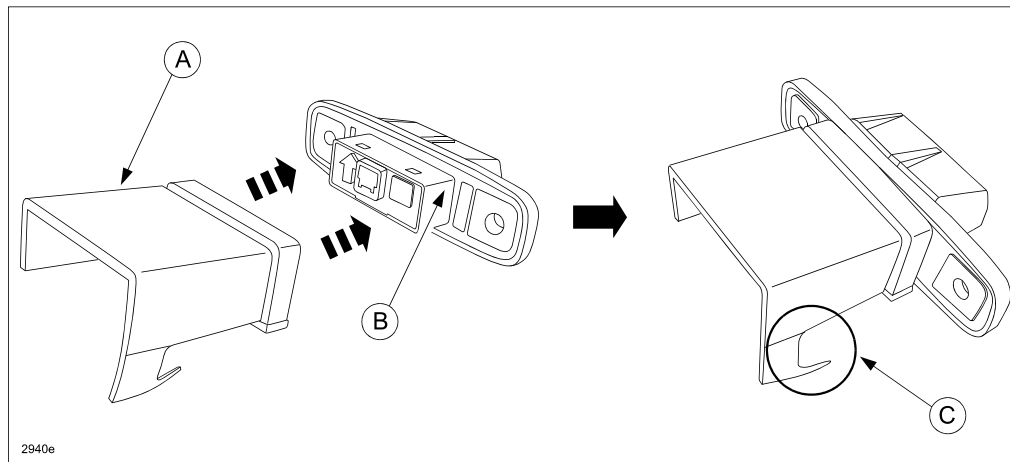
5. **For Vehicles X and Y (WITH rust occurrence) and Vehicle Z (regardless of rust occurrence),** proceed to REPAIR PROCEDURE E. INSTALLATION OF WATER-PROOF PROTECTOR.

REPAIR PROCEDURE E. INSTALLATION OF WATER-PROOF PROTECTOR:

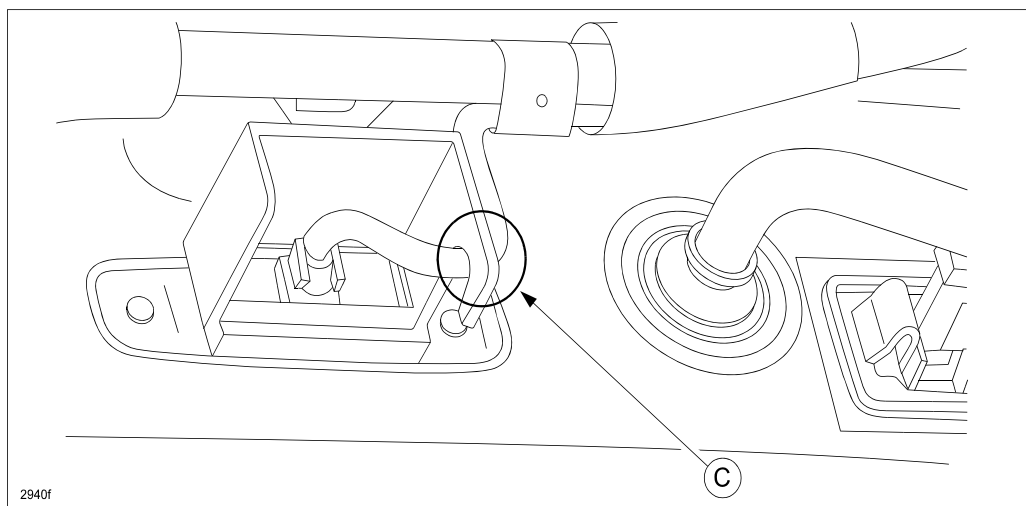
(For Vehicles X and Y with rust occurrence and Vehicle Z regardless of rust occurrence)

1. (Vehicles Y and Z only): Remove the old water-proof sheet and discard.
2. Install the water-proof protector over the opener switch.

NOTE: For illustration purposes, the protector (A) and opener switch (B) are not shown installed on the vehicle.



3. Hook the rear harness No. 2 to the hook (C) of the water-proof protector, then re-connect the connector.



4. Verify the repair.

PART(S) INFORMATION

Part Number		Description	Qty.	Rear Harness No. 2	
New	Old			If Not Rusted	If Rusted
KD53-62-4B0	KD53-62-4B0	Opener Switch	1	Vehicle X, Y and Z	
BC1B-58-862	BC1B-58-862	Water-Proof Sheet	1	Vehicles X and Y	---
KD53-62-4B2	KD53-62-4B2	Water-Proof Protector	1	Vehicle Z	Vehicle X, Y and Z
KD33-67-060C	KD33-67-060B	Rear Harness No. 2	1	---	Vehicle X, Y and Z
KD37-67-060C	KD37-67-060B	Rear Harness No. 2	1	---	Vehicle X, Y and Z
KD45-67-060C	KD45-67-060B	Rear Harness No. 2	1	---	Vehicle X, Y and Z

Water-Proof Compatibility:		Water-Proof Sheet	Water-Proof Protector
Rear Harness No. 2	Old	O	X
	New	O	O

O: applicable

X: not applicable

WARRANTY INFORMATION

NOTE:

- This warranty information applies only to verified customer complaints on vehicles eligible for warranty repair.
- This repair will be covered under Mazda's New Vehicle Limited Warranty term.
- Additional diagnostic time cannot be claimed for this repair.
- **Select from below depending on the rust occurrence condition, then select one operation number applicable to the vehicle type and specification.**

RUST IS NOT FOUND at the rear harness No. 2 terminals.

Warranty Type	A
Symptom Code	61
Damage Code	9Y
Part Number Main Cause	KD53-62-4B0
Quantity	1
Operation Number / Labor Hours:	XXK58CRX / 0.4 Hrs.

- NOTE:** Submit the Water-Proof Sheet (BC1B-58-862) for Vehicle X and Y, and Water-Proof Protector (KD53-62-4B2) for Vehicle Z as a related part.

RUST IS FOUND at the rear harness No. 2 terminals.

Warranty Type	A
Symptom Code	61
Damage Code	9Y
Part Number Main Cause	KD53-62-4B0
Quantity	1
Operation Number / Labor Hours:	XXK59BRX / 0.5 Hrs.

NOTE:

- Submit the Water-Proof Protector (KD53-62-4B2) and the rear harness No. 2. (****-67-060*) for Vehicle X, Y and Z as a related part.
- A water-proof protector can NOT be installed to the old rear harness No. 2.