

Special Bulletin

SP14-84A

Date	Expiration	Release	Page
09.2014	09.2016	3	1(12)

Revision A This revision supersedes previous versions.
Sept. 09, 2015 Added "Stop" control points; Digital Caliper; Windshield brand verification.

FRONT CENTRAL PILLAR REPLACEMENT B13R (9700 us/can)

DESCRIPTION

Perform this bulletin on a "Fix As Fail" basis. On the vehicles affected by this bulletin, replace the front central windshield pillar for an improved version.

MODEL YEAR(S) and VEHICLES involved

NOTICE TO SERVICE CENTERS	
<i>Verify vehicle eligibility by checking warranty bulletin status with SAP or via ONLINE WARRANTY SYSTEM available on Service / Warranty tab of Prevost website.</i>	
Model	VIN
Volvo 9700 US/CAN Model Year : 2008 - 2013	From 3CER8G12X85123456 up to 3CET2S226D5160992 incl.
This bulletin does not necessarily apply to all the above-mentioned vehicles, some vehicles may have been modified before delivery. Please refer to SAP or Vehicle Warranty Information tool found on Prevost-Systems tab of the Volvo Trucks Dealer Portal for exact status.	

MATERIAL NEEDED

Please order the following parts:

Part No.	Description	Qty
22069304	Windshield Pillar	1
21133962	Sealing Molding	1
22106050	Cover Dashboard	1

Other parts that may be required depending on vehicle condition:

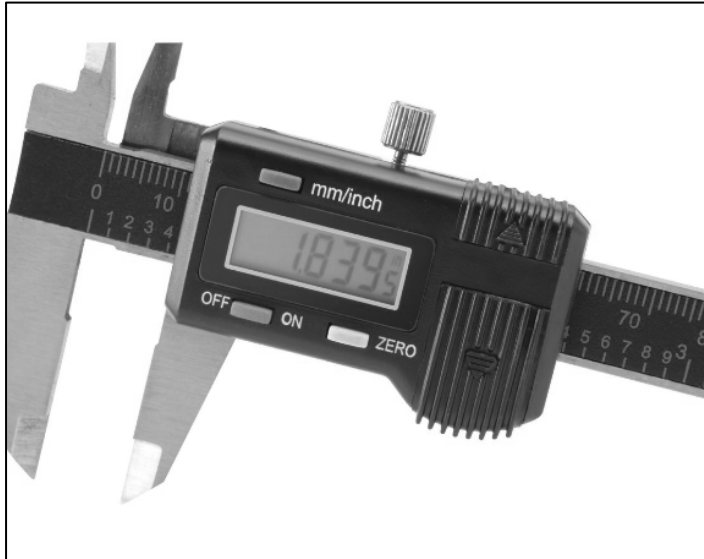
Part No.	Description	Qty
21125654	Windshield LH	1
21136089	Windshield RH	1
682176	Adhesive Sealant	600 ml.
680532	Sikaflex 221-Gray	200 ml.
683661	Sika Aktivator	100 ml.

NOTE

Material can be obtained through regular channels.


REQUIRED TOOLS

Digital caliper with "millimeters/inch"



DANGER

Park vehicle safely, apply parking brake, stop engine. In the battery box, set the battery cut-off switch to the OFF position prior to working on the vehicle.

	Check when Completed <input checked="" type="checkbox"/>
	Initials <i>J. Doe</i>

For all steps marked with the above "STOP" symbol, check as "completed" and apply your initials.

Attach the completed procedure filled with check marks and initials with the work order.

Special Bulletin

SP14-84A

Date	Expiration	Release	Page
09.2014	09.2016	3	3(12)

Before starting any work, assess the brand of windshield installed on the vehicle.

Write it down below:

Brand: _____

If the brand is not Volvo brand contact your service representative.



Possible windshield brands other than "Volvo"



Volvo brand windshield:

PROCEDURE

1. Remove wipers
2. Move mirrors outwards.
3. Remove interior rear-view mirror
4. Loosen the upper roof cover.
5. Remove the existing windshields
6. Remove center the pillar. Discard the existing pillar if it is the OLD style. Keep if it is the NEW style pillar .



The new style pillar is stronger looking



Date	Expiration	Release	Page
09.2014	09.2016	3	5(12)

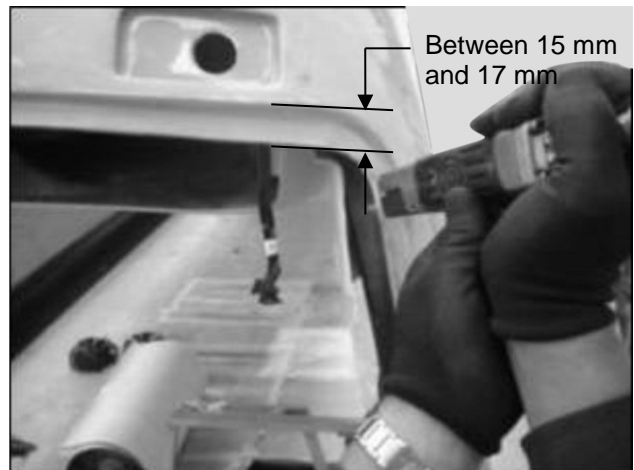
- Remove the seal.
- Manually scrape any SIKA residue from the fiber cap of the coach *before* using any removal products.
- Measure fiberglass lip with digital caliper to have between **15 and 17mm all around**

If required cut the fiberglass edge in order to achieve the fit.

STOP

Check when Completed

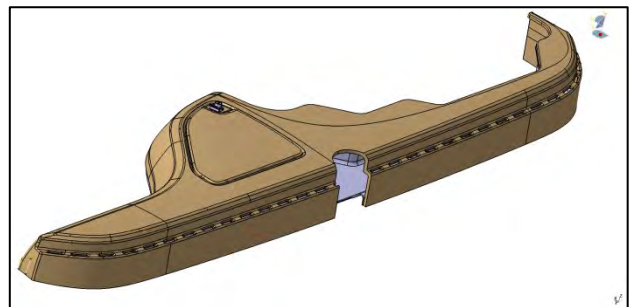
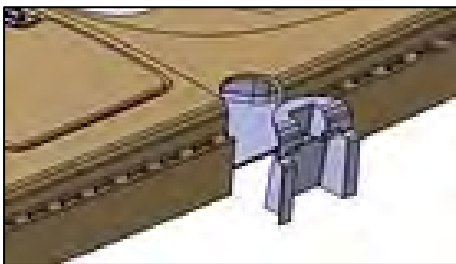
Initials _____



- Cut a portion of the dash board middle panel in order to house the Cover Dashboard PN: 22106050, according with the dimensions shown in Appendix at the end of this document.

Test and fit.

Only install at the end of the procedure

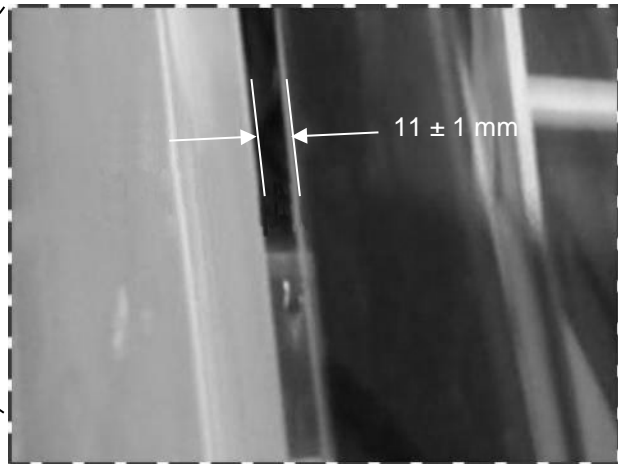


Date	Expiration	Release	Page
09.2014	09.2016	3	6(12)

11. Cut 8" long sections of 21133962 sealing molding. To install temporarily the windshield.
12. Install at top and bottom of post.
13. Install a seal within 3" of each bottom corner.



14. Fit the gap between windshield and fiberglass at 11 ± 1 mm.




Check when Completed



Initials

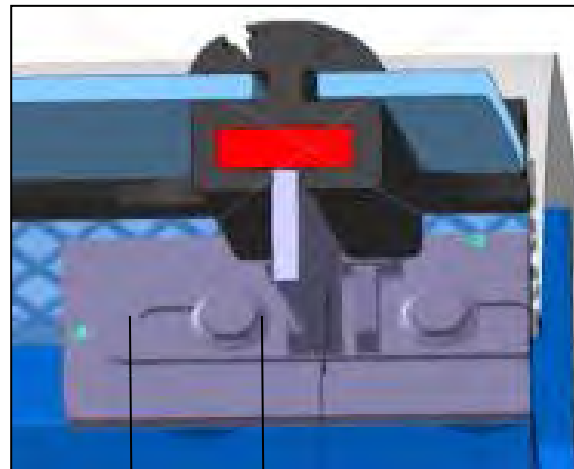
15. Install the mirror on the new Front Central Pillar PN: 22069304 make two holes (Drill: 5/32") in the plate for the mirror support screws, use the mirror support to locate the holes.

 WARNING
When drilling always wear proper eye protection. Failure to wear proper eye protection can result in serious personal injury.



16. Check for positioning of slots in pillar bases with respect to the threaded holes.


Note: Do not force the pillar to avoid stress in the windshield glass panes.




If required, the new holes can be located along the slot in the pillar base.

17. If the slots and threaded holes don't match exactly, drill new holes. Drill along the slots to make new holes, see figure.

18. Drill a guide hole with a 13/64" drill, then drill 7 mm and finally tap M8*20

	Check when Completed <input type="checkbox"/>
	Initials _____

 WARNING
When drilling always wear proper eye protection. Failure to wear proper eye protection can result in serious personal injury.



19. Install fasteners, tighten to: 24±4 Nm. (18lbf-ft)

	Check when Completed <input type="checkbox"/>
	Initials _____




20. When the windshield gaps are all within the desired values, perform final assembly of the windshield according to local best practices.

Date	Expiration	Release	Page
09.2014	09.2016	3	9(12)

21. The lower part of the windshield seal should be cut to avoid warping in this area.

22. Clean the work area from any debris resulting from the procedure.


 Check when Completed

Initials _____

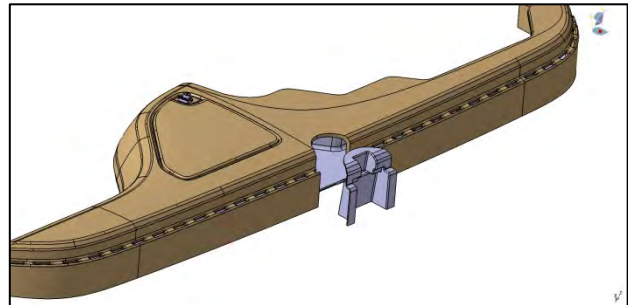


23. Assemble and seal the Cover Dashboard to the middle panel: remove any grease, oil or dust, promote sealing with Sika Aktivator and seal with Sikaflex-221, and fix with masking tape during curing time.

Note: Follow drying and curing time according to manufacturer instructions.


 Check when Completed

Initials _____



Date	Expiration	Release	Page
09.2014	09.2016	3	10(12)

24. Mark and cut the upper plastic cover as required according with the position of new Central Front Pillar.


 Check when Completed

Initials _____



25. Re-install the interior covers as the original installation.

Confirm all finishing panels are installed and fit and finish is ok.

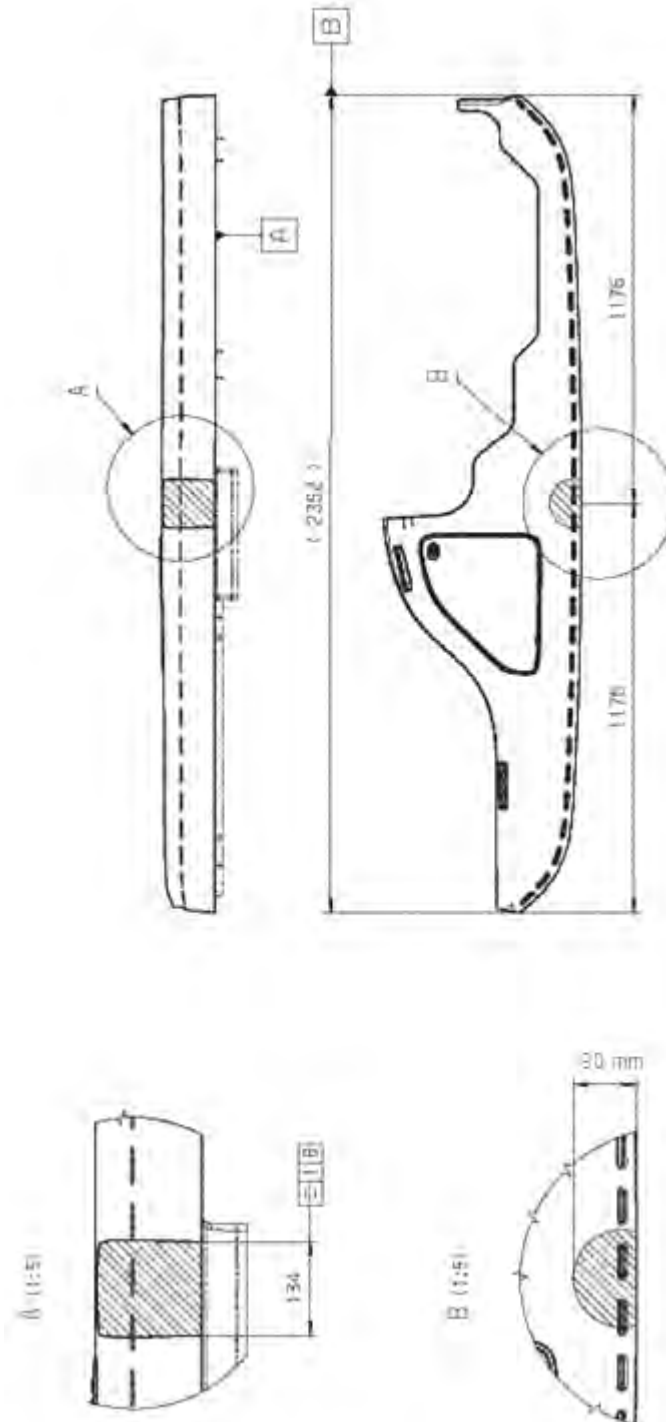
 Check when Completed

Initials _____

PARTS / WASTE DISPOSAL

Discard waste according to applicable environmental regulations (Municipal/State[Prov.]/ Federal)

APPENDIX



Dimensions are in millimeters.

Date	Expiration	Release	Page
09.2014	09.2016	3	12(12)

ESTIMATED TIME

The time required to perform this special bulletin is approximately 7.5 hour.

OTHER

VBC Bulletin	TBC
Fail Code	18.06
Defect Code	09
System Condition	B
Causal Part	22011730

Prevost engages in a continuous program of testing and evaluating to provide the best possible product. Prevost, however, is not committed to, or liable for updating existing products.