



Date	Group	No.	Release	Page
1.2014	465	011	01	1(7)

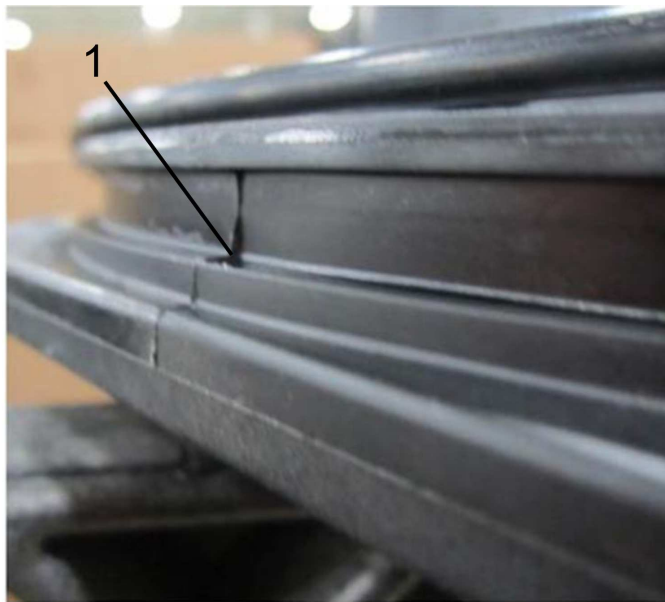
CRD 150/151 Carrier Inspection Cover
CHU, CXU, GU, LEU, MRU, TD

PI0836, CRD 150/151 Carrier Inspection Cover, Replacement

(January 2014)

Information

A manufacturing defect has been identified affecting carriers built from December 2012 through January 2013. The issue is molding flash that may be extending into the O-ring groove at the 12 and 6 o'clock positions of the composite side cover. This flash may cut into the O-ring and cause it to distort and resulting in oil leakage. It is recommended that the cover be replaced to correct this condition.



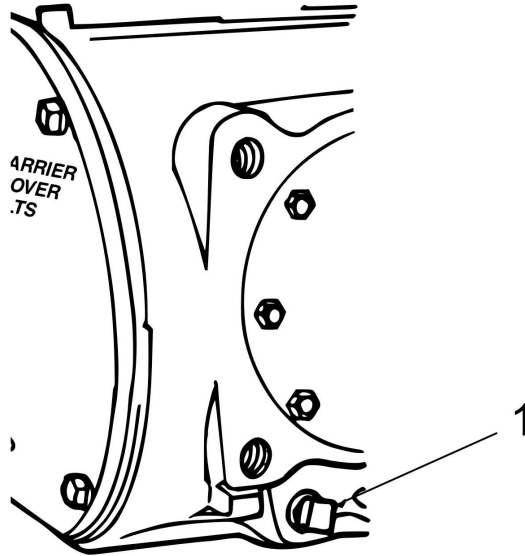
W4086864

1 Molding Flash

Kit part number 85136434 includes the composite material cover, rubber fill plug and O-ring.

Cover Removal

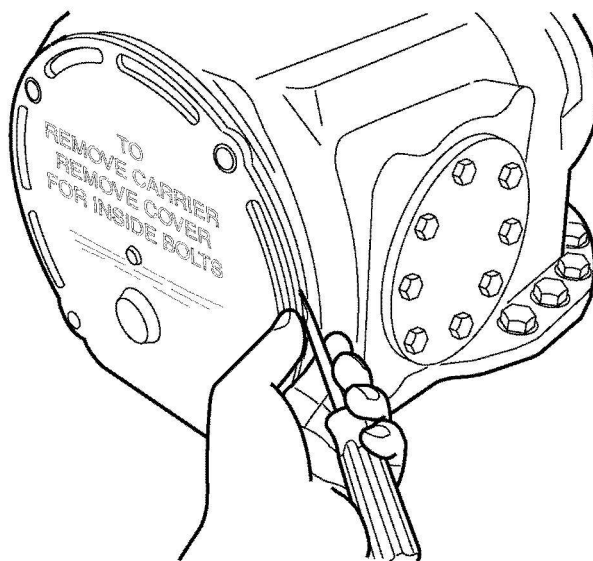
Place an approved container under the carrier oil drain plug and remove the plug. Use only hand tools when removing or tightening the drain plug. When all oil is drained from the carrier, install the oil drain plug.



W4087218

1 Drain Plug

Remove the four cover mounting fasteners. Locate the chamfers on the flange of the cover at the 3 and 9 o'clock positions. Insert a screwdriver under the chamfer and pry evenly on both sides until the cover is free.



W4086199

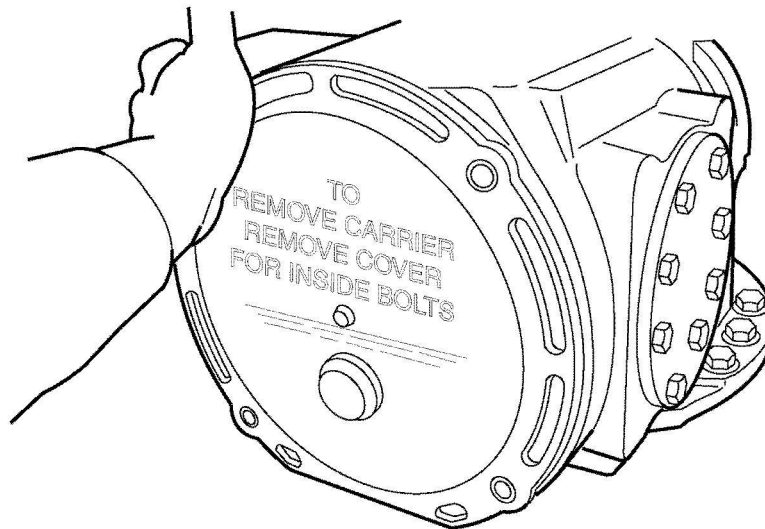
Cover Installation



CAUTION

DO NOT drop the cover. Dropping may cause the cover to crack.

Apply a thin film of gear oil to the O-ring and on the inner lip of the carrier housing opening. Position the cover on the side of the carrier. Using either the palm of your hand or a light rubber mallet, lightly tap around the outer edge of the cover to seat it into place.



W4086200



CAUTION

DO NOT hit the center of the cover. Hitting the center during installation can cause the cover to crack.

When the cover is fully seated, install the mounting bolts and tighten to 31 Nm (23 lb-ft).

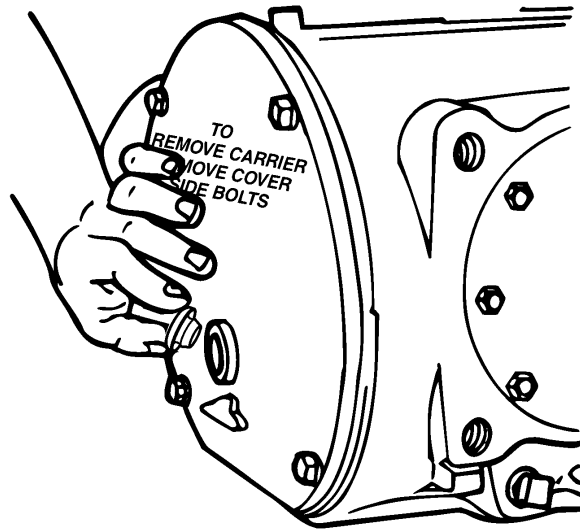
Fill Plug Removal and Installation



CAUTION

DO NOT use a screwdriver or similar tool to pry the plug from the cover, as doing so may damage the plug and cause an oil leak.

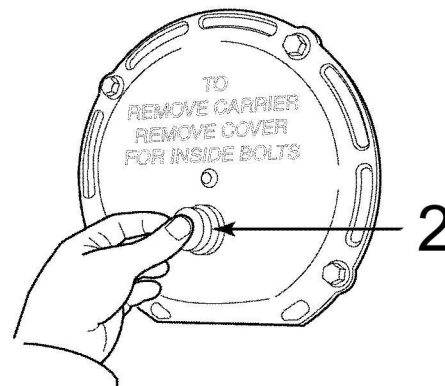
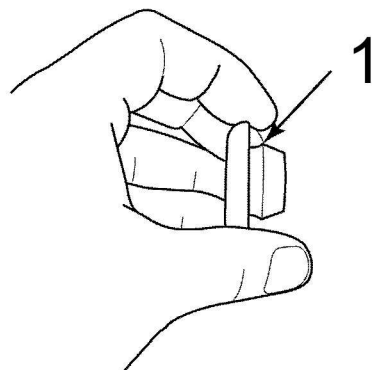
The composite bevel gear compartment cover utilizes a rubber fill plug. When removing the plug to check oil level or fill the bevel gear compartment with oil, pry the plug with your fingers. DO NOT use any type of tool.



W4031132

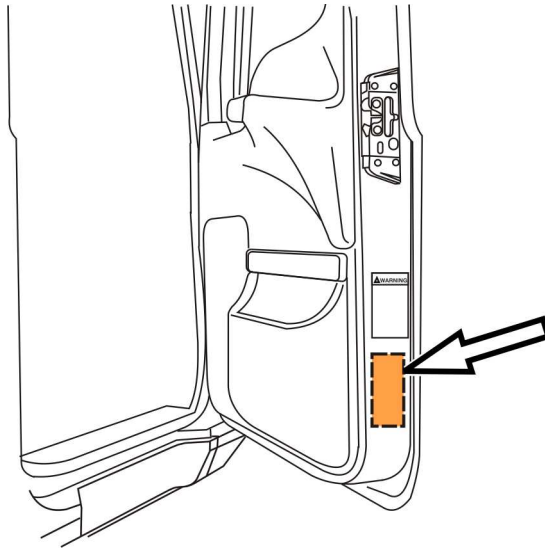
Fill the carrier with the specified amount of approved gear oil. Do not overfill.

Lubricate the plug with clean gear oil (1). Press the plug into place with your fingers or the palm of your hand (2). The plug is properly seated when it snaps into place.



W4086198

To signify that the campaign has been completed, using a permanent-type marker (such as a Sharpie®) to write the campaign number (PI0836) and completion date in the spaces provided on the Campaign Completion label located inside the cab as shown in the illustration below. If a label is not already affixed inside the cab, apply a label (part No. TS897) and supply the information as required. Campaign Completion labels are available in packs of 50 and can be ordered by faxing a completed BR313 to Pacesetters Business Services at 610-264- 9465.



W8034103

Note: Take Charge Time is not included in the Labor Code for this operation. Take charge may be eligible but can only be used once per repair visit. If vehicle is having other warranty repairs performed, take charge should be charged to the warranty repair, otherwise take charge can be charged to this service program.

Reimbursement

This repair is covered by an authorized Service Program. Reimbursement is obtained via the normal claim handling process.	
Claim Type (used only when uploading from the Dealer Bus. Sys.)	B
Recall Status	
Vehicle inspected, repair not required	1- Inspected OK
Vehicle repaired per instruction	2- Modified per instruction
Labor Code	
Primary Labor Code	
Steam clean	101SA0101 — 0.2 hrs.
Replace cover	466KD0145 — 0.5 hrs.
Time to take charge and determine campaign status	101AA-0A-00 — 0.3 hrs.
Causal Part	21658870/ 84KH52
Authorization Number	PI0836
Expiration Date	31 JAN 2015