



Service Bulletin

File in Section: -

Bulletin No.: PI1378

Date: December, 2014

PRELIMINARY INFORMATION

Subject: Water Intrusion in Rear Compartment and/or Battery Compartment of Vehicle

Models: 2014-2015 Cadillac CTS Sedan (VIN A)
Built Prior to September 9, 2014

Condition/Concern

Some customers may comment on water in the rear compartment and/or in battery compartment of vehicle. This may be noticed after a heavy rain.



4038892

During installation, the foam seal around the taillamp electrical connector and/or guide pin may have been creased, allowing a path for water intrusion.

Recommendation/Instructions

If this condition exists, follow the procedure below.

1. Perform a water hose test to the rear deck lid and taillamp area. Refer to Water Hose Test in SI.
2. If the leak is verified to occur at the taillamp harness connector or guide pin, remove the rear taillamps. Refer to Rear Body Structure Stop Lamp Replacement in SI.
3. Visually inspect both taillamp gaskets/seals around the connector and guide pin for any water/moisture or dirt that may have passed by.

Note: If the gasket has no water/moisture or dirt passing through by the connector or guide pin foam seal, continue diagnosis referring to SI.

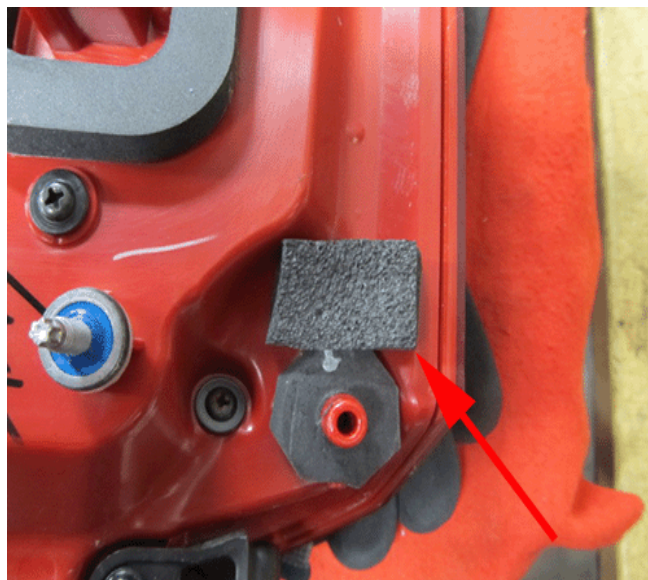
4. If any of the taillamps have moisture or water passing by to the connector or guide pin foam seal, clean above the taillamp connector foam seal thoroughly making sure there is no moisture that would disrupt the bonding of adhesive backed shim stock.



4038893

5. If moisture is detected at the electrical connector gasket, apply a piece of Kent P46505 adhesive back shim stock, approximately 70 mm (2¾ in) long, above the already existing foam seal of the connector of the taillamp.

Important: When installing the foam be sure that there are no abnormalities or creases that could allow water to pass by the newly installed foam.



4038865

6. If moisture is detected at any of the three guide pin gaskets, apply a piece of Kent P46505 adhesive backed shim stock, approximately 32 mm (1¼ in) long, above the affected guide pin of the taillamp.

Important: When installing P46505, be sure to apply enough pressure to allow the adhesive back shim stock to fully seat inside the mold of the taillamp.

7. Reinstall the taillamps. Refer to Rear Body Structure Stop Lamp Replacement in SI.

Parts Information

For product ordering information, call a local automotive equipment supplier or call Kent® at 1-866-837-9908.

Part Number	Description	Material Allowance
P46505*	Kent® Adhesive Back Shim Stock	\$0.50 USD (per vehicle) \$0.55 CAD (per vehicle)
*There is enough material to do approximately 90 vehicles per roll. Store the remaining material for future use.		

Warranty Information

For vehicles repaired under the Bumper-to-Bumper coverage (Canada Base Warranty coverage), use the following labor operation. Reference the Applicable Warranties section of Investigate Vehicle History (IVH) for coverage information.

Labor Operation	Description	Labor Time
2080368*	Install Adhesive Back Shim Stock on Taillamp	1.3 hrs
Add	Both Taillamps	0.3 hr

*This is a unique Labor Operation for Bulletin use only. It will not be published in the Labor Time Guide.