



Service Bulletin

File in Section: -

Bulletin No.: PI1367

Date: December, 2014

PRELIMINARY INFORMATION

Subject: Manual Transmission Will Not Stay in 7th Gear When Shifting from 6th Gear

Models: 2014 Chevrolet Corvette
Equipped with Manual 7 Speed Transmission (RPOs MEL or MEP)

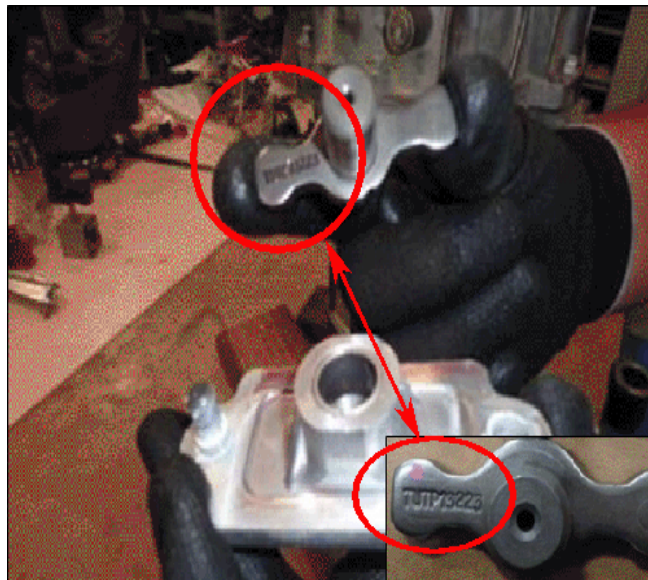
Attention: This PI also applies to the above models that may be Middle East, Europe, Japan and Russia Export vehicles.

Condition/Concern

Some customers may comment that the manual transmission will not stay in 7th gear when shifting from 6th gear.

Recommendation/Instructions

1. Check the Transmission Control Adjustment. Refer to the latest version of PI1276.





3816221

Legend

- (1) Incorrect inverter
- (2) Correct inverter

2. Inspect the inverter and verify that the correct part number is installed.

2.1. Raise the vehicle.

2.2. Remove inverter plate bolts.

2.3. Remove the cover and inverter from the transmission.

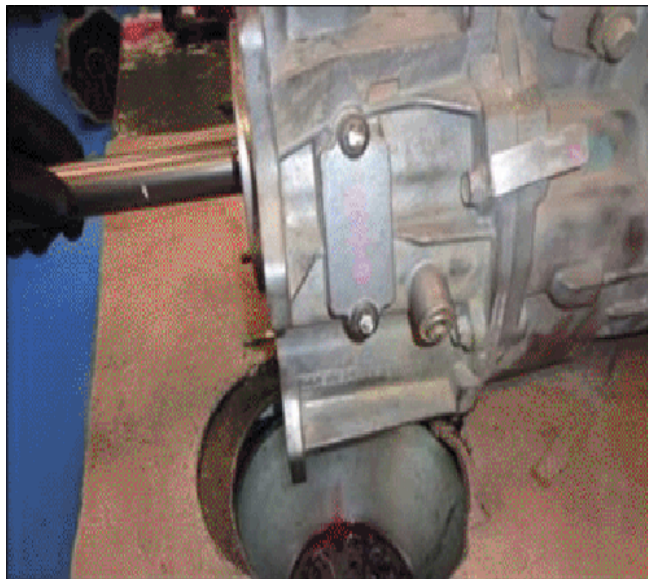
– Verify if the transmission has the correct inverter (TUTP13223).

– If the transmission has the incorrect inverter (TUTP11307) continue with the disassembly.

If the correct part number is installed, re-install the inverter and do not proceed with this PI. Refer to SI for additional diagnostics.

If the part number is TUTP11307, remove the transmission and replace the internal transmission parts included in the WPC #746 kit following the procedure below:

1. Remove the transmission from vehicle. Refer to Transmission Replacement in SI.



3806120

2. Drain the transmission.



3806131

3. Remove the gap sensor cover bolts.

Important: DO NOT remove the sensor.

4. Remove the gasket and clean the surface.

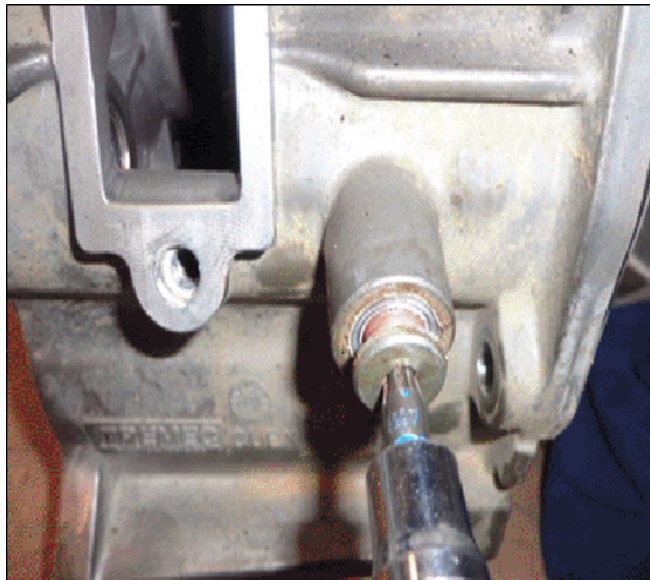


3806133



3806135

5. Remove the magnet bolt and magnet.



3806139

6. Remove the detent plug.



3806144

7. Remove spring and ball detent.



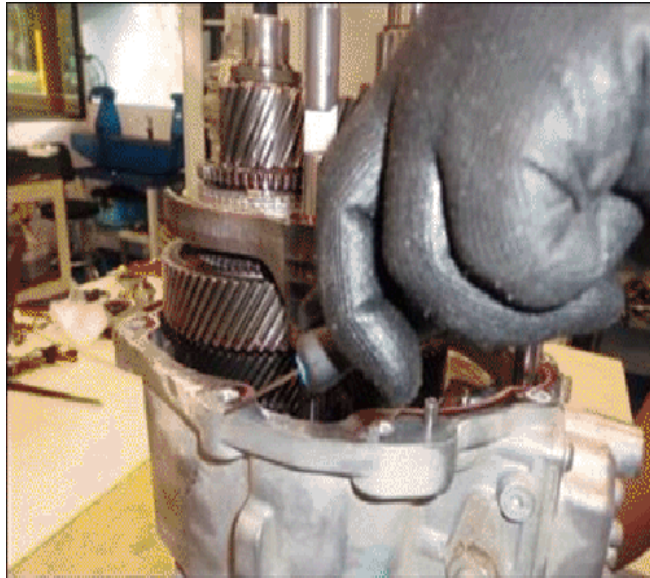
3806149

8. Remove extension bolts.



3806154

9. Remove extension.



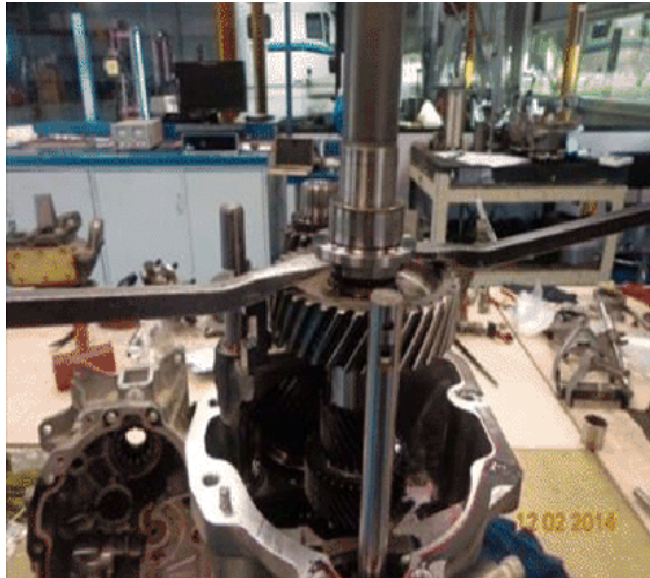
3806158

10. Remove gasket and clean surface.



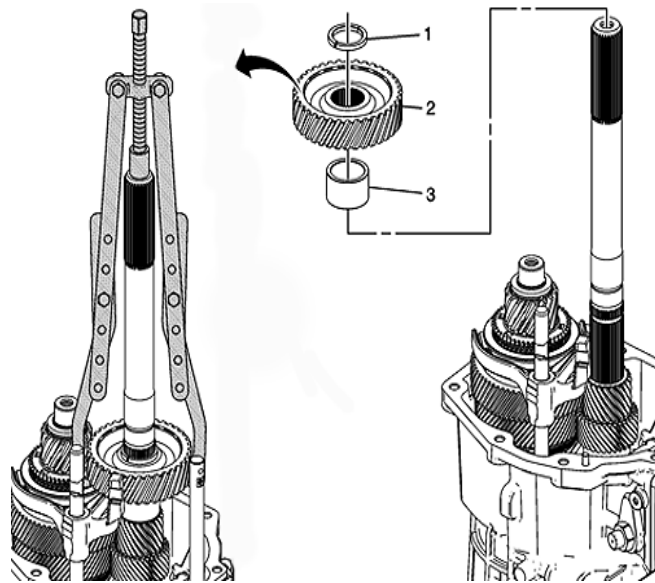
3806161

11. Remove snap ring.



3806163

- 12. Remove the bushing and washer.
- 13. Remove reverse gear split washer.



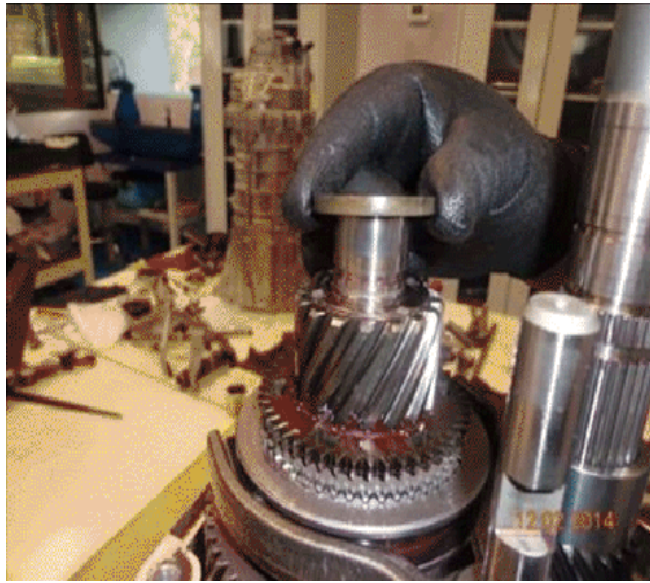
3949682

14. Remove the reverse gear using DT-22888-D Side Bearing Remover Kit and DT-22888-60 Puller Leg Adapter kit.
Note: DO NOT remove the driven reverse gear spacer.



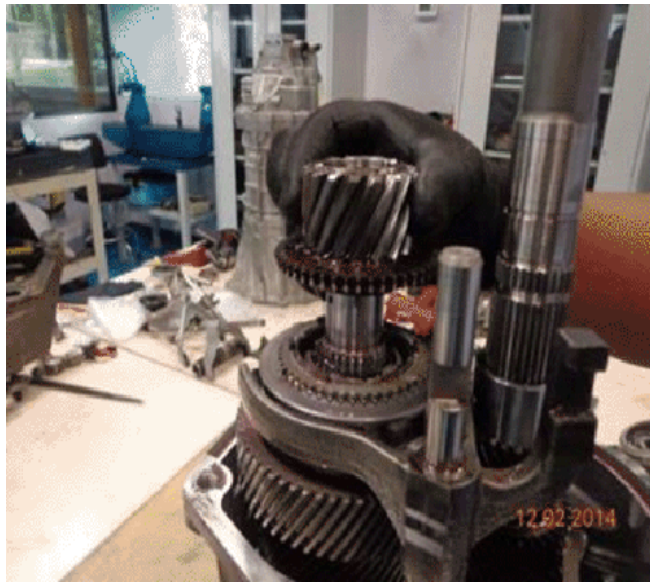
3806167

15. Remove snap ring.



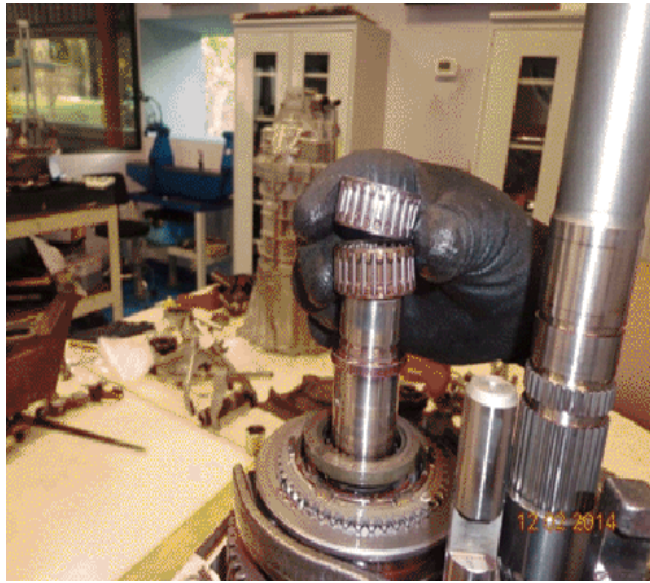
3806170

16. Remove the washer.



3806173

17. Remove the reverse gear.



3806176

18. Remove the bearings.



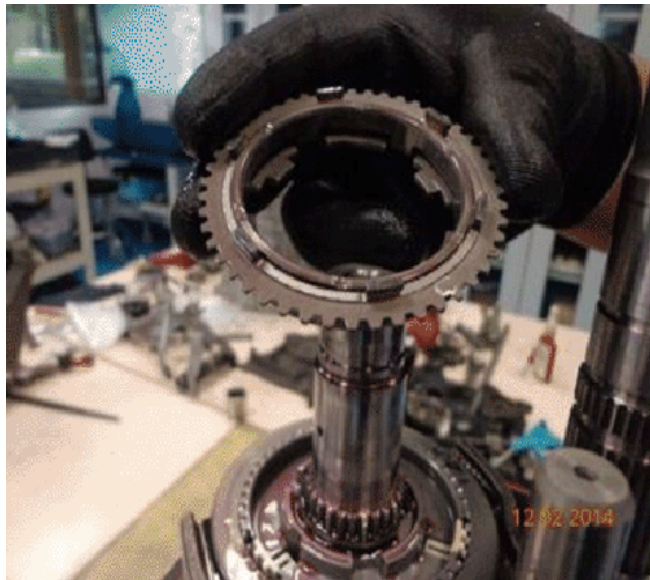
3806183

19. Remove the spacer.



3806185

20. Remove the thrust spacer.



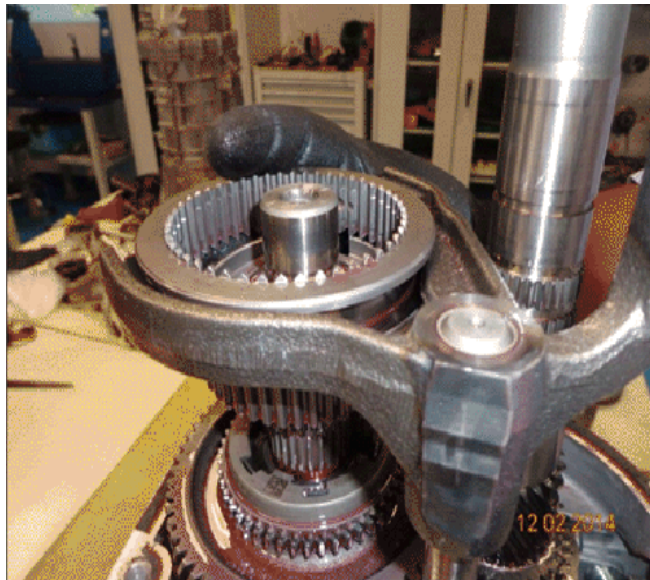
3806189

21. Remove the double cone system.



3806192

22. Remove the snap ring.



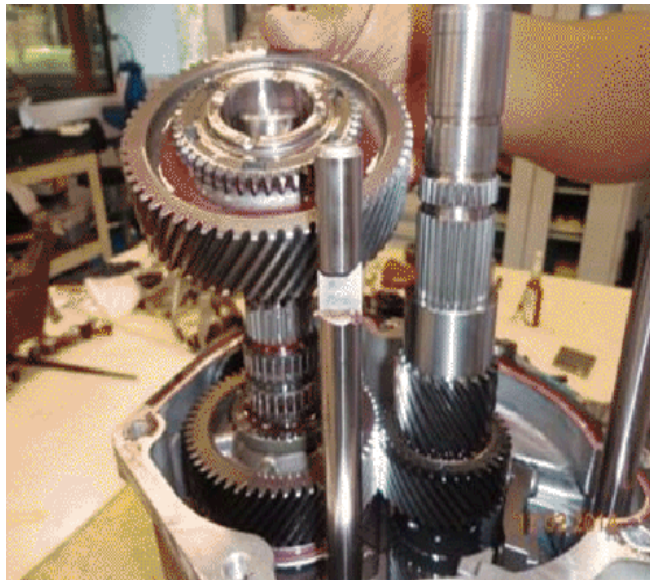
3806197

23. Remove the 7th-Rev Fork, 7th & Rev Synchronizer Assy and Struts.



3806200

24. Remove the double cone system.



3806203

25. Remove and discard the 7th speed gear.

26. Reverse order for installation. Refer to Transmission Replacement in SI.

Parts Information

*These parts are available through the Warranty Parts Center (WPC). Please use the form at the end of the bulletin to order.

Part Number	Description
WPC #746	Internal Transmission Parts Kit
19302583	GASKET KIT, M/TRNS

Warranty Information

For vehicles repaired under the Powertrain coverage, use the following labor operation. Reference the Applicable Warranties section of Investigate Vehicle History (IVH) for coverage information:

Labor Operation	Description	Labor Time
8480148*	Inspect Inverter	0.4 hr
Add	Install Internal Transmission Parts Kit	12.5 hrs

*This is a unique Labor Operation for Bulletin use only. It will not be published in the Labor Time Guide.

IMPORTANT NOTE WHEN PRINTING THIS FORM: If the form prints out on two pages, make certain you fax BOTH pages so that the WPC receives all the needed information. Missing information will delay or prevent the part from being shipped.

Parts Request Form – Warranty Parts Center

Use this form ONLY for U.S., Canadian and Mexico Dealers. Export markets located outside of North America must contact their regional Technical Assistance Center for assistance.

To: Warranty Parts Center

e-mail: warrantypartscenterUSA@gm.com

or WPC Fax: 248-371-0192

Attn: Amina Winfrey

Part Being Requested: #746

Dealer BAC (U.S.) /Dealer Code (Canada)/Dealer Number (Mexico):

Dealer Name:

Dealer Address:

Dealer Contact Person:

Dealer Phone Number:

Repair Order Number:

Vehicle VIN:

Important: If you do not receive the part within 2 business days after e-mailing or faxing your part request to the Warranty Parts Center, please call WPC Customer Assistance at 248-371-9901/9902.