



Service Bulletin

File in Section: -

Bulletin No.: PI1201

Date: March, 2014

PRELIMINARY INFORMATION

Subject: Exhaust Rattle, Buzz, Pop or Whistle

Models: 2014 Chevrolet Silverado 1500
2014 GMC Sierra 1500
Equipped with 4.3L or 5.3L Engine (RPOs L83, LV3)
Built Prior to December 8, 2013 or Muffler Julian Date of 352 2 (See Below)



3769992

Condition/Concern #1

Some customers may comment on a rattle, buzz and/or pop (oil canning) noise heard coming from the exhaust system under different conditions.

Recommendation/Instructions #1

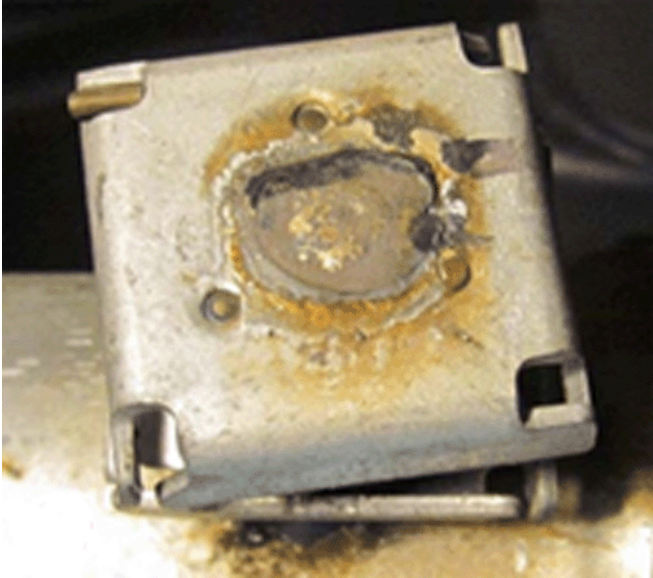
The correction of the muffler pop or oil canning noise will require the replacement of the cold end or back half of the exhaust system.

Note: The exhaust system rattle can also be diagnosed by tapping on the bottom of the muffler.

Condition/Concern #2

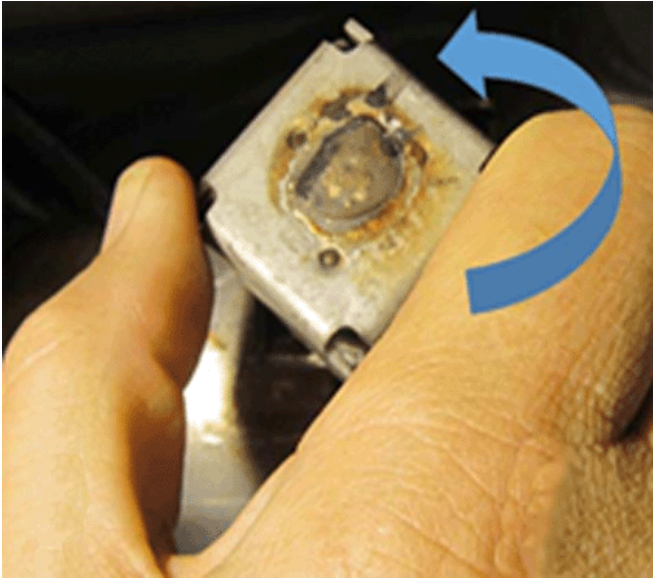
Some customers may comment on a whistle type noise that can be heard coming from the muffler area.

Recommendation/Instructions #2



3768203

1. Temporarily lock the Passive Exhaust Valve (PEV) in the open position, located behind the muffler, as shown in the illustration above.



3768219

2. Rotate the Passive Exhaust Valve (PEV) counterclockwise as shown in the illustration above.



3768276

3. For testing purposes only, obtain a 1/4" x 20 x 2" steel bolt, nut, lock washer and two large standard 1/4" x 1" outside diameter washers (body washer), and install the bolt as shown in the illustration above.
4. If the condition is reduced or changes greatly in severity, replace the exhaust system.

Condition/Concern #3

Some customers may comment on a vibration in the seat or steering wheel felt when the truck engages V4 mode (Active Fuel Management).

Recommendation/Instructions #3

1. Verify the condition.
2. Review exhaust system for Ground Outs at the mounts and repair as necessary.



3768276

3. For testing purposes only, obtain a 1/4" x 20 x 2" steel bolt, nut, lock washer, and two large standard 1/4" x 1" outside diameter washers (body washer), and install the bolt as shown in the illustration above.
4. If the condition is reduced or changes greatly in severity, replace the exhaust system.

Parts Information

| Part Number | Description | Usage |
|-------------|---------------------------|---|
| 20757703 | MUFFLER, EXH (W/EXH PIPE) | CK155 (43) 4.3 (LV3), 5.3-C (L83), CK157 (53) 4.3 (LV3) , 5.3-C (L83) |

| Part Number | Description | Usage |
|--------------------|---------------------------|---|
| 20757704 | MUFFLER, EXH (W/EXH PIPE) | CK157 (03) 4.3 (LV3), 5.3-C (L83), 6-SPD AUTO TRANS (MYC) |
| 20757702 | MUFFLER, EXH (W/EXH PIPE) | CK157 (43) 4.3 (LV3), 5.3-C (L83) |
| 20757701 | MUFFLER, EXH (W/EXH PIPE) | CK159 (03) 4.3 (LV3), 5.3-C (L83) |
| 23199937 | MUFFLER, EXH (W/EXH PIPE) | CK157 (43) 6.2 (L86) |
| 23440153 | MUFFLER, EXH (W/EXH PIPE) | CK155 (43) 6.2 (L86), CK157 (53) 6.2 (L86) |

Warranty Information

For vehicles repaired under warranty, use:

| Labor Operation | Description | Labor Time |
|------------------------|-----------------------------|------------------------------------|
| 4051530 | Exhaust Muffler Replacement | Use Published Labor Operation Time |