



Service Bulletin

File in Section: -

Bulletin No.: PIT5259A

Date: April, 2014

PRELIMINARY INFORMATION

Subject: Installation Tip - Door Striker Cover Installation During PDI

Models: 2015 Cadillac Escalade Models
2015 Chevrolet Tahoe LTZ, Suburban LTZ
2015 GMC Yukon Denali Models

This PI was superseded to update model list. Please discard PIT5259.

The following diagnosis might be helpful if the vehicle exhibits the symptom(s) described in this PI.

Condition/Concern

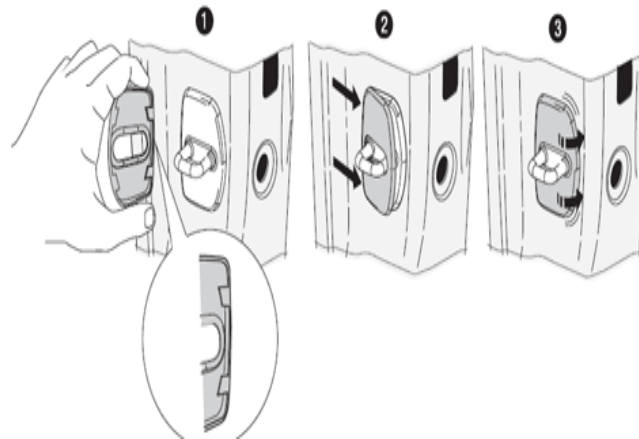
Installation of the front and rear door striker covers is part of the PDI process for up-level full-size utilities.

Note: These covers will be shipped with the vehicle from the assembly plant.

There have been reports of these covers being installed incorrectly / backwards.

Recommendation/Instructions

Make sure the rounded side of the cover is positioned towards the outboard side of the vehicle, as reflected below:



3723507

Warranty Information

The labor time for installing the door striker covers is included in the PDI time.

Please follow this diagnostic or repair process thoroughly and complete each step. If the condition exhibited is resolved without completing every step, the remaining steps do not need to be performed.