

Tech Tips

TT 70-14-01

Date: July 18, 2014

2012-2014 Passat Headliner Removal Installation

The removal and installation of the headliner on the Passat can be time consuming and difficult in some areas. Properly installing the headliner, seals and pillar trims will alleviate many issues that would normally be attributed to a headliner cut to short.

All steps should be followed from ELSA. Every piece of trim the repair manual has you remove is very important to create the clearance needed to remove the headliner from the vehicle and get the new headliner into the vehicle.

Below are steps of the headliner removed/reinstalled without being bent through the front passenger door with glove box removed and both front seats reclined flat.





Das Auto.

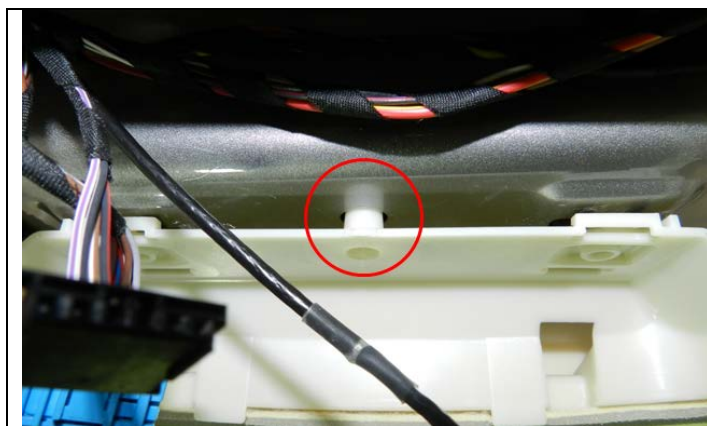
Service Information





Das Auto.

Service Information



There is about 2mm side to side play in the front of the headliner. Start by aligning the locator pin in the front of the vehicle to the center of the locator hole. You may also find some play in the rear of the headliner but once all the clips are installed it is very difficult to use that play.

Service Information



The B-Pillar installation is difficult and can affect the headliner fit and finish.

Start by lining up the 2 tabs at the top of the B-pillar with the 2 slots in the B-pillar frame.



Then, push the B-pillar up, this will push the headliner up.



Das Auto.

Service Information



Install the screw at the top of the b-pillar, taking care to make sure it is properly lined up with the hole in the B-pillar frame. **DO NOT** install the lower half of the upper B-pillar until the screw is started.

Service Information



After the screw is installed, Align the B pillar trim seatbelt adjustment lever with the seatbelt adjustment mechanism on the B- pillar.

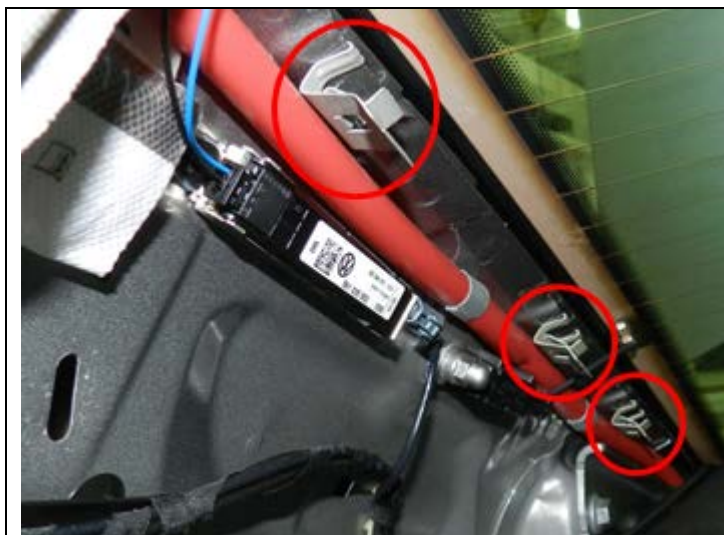
While pushing the B pillar trim up against the headliner tighten the screw at the top. Make sure you have maximum support by the B-pillar for the headliner.

Install the lower half or the upper B-pillar trim.



When installing the C-Pillar remove the 3 metal clips from the glass edge of the trim.

Service Information



Install them in the proper location along the glass. This makes the installation and alignment of the C-pillar much easier.



Once all the trim is installed make sure that the headliner and trim edges are properly tucked behind the door seals.

If you do not install the pillar trims and/or tuck the headliner in the door seals properly you may see large gaps like the one shown.