

Service Information

VAS Tester

Number: AVT-14-03

Subject: VAS 5054A Transmitter Head - USB Configuration -
ODIS Service Only

Date: Jan. 13, 2014

Supersedes AVT-13-15 due to complete revision

Table of Contents

Section	Page
1.0 Introduction	1
2.0 Preparation - Must Read	2
3.0 USB Configuration	2
3.1 General Information	2
3.2 Procedure – Windows XP	3
3.3 Procedure – Windows 7	4
4.0 USB Function	4

1.0 – Introduction

If a VAS diagnostic tablet or laptop device is used to perform Software Version Management (SVM) or immobilizer adaptation, it is necessary to connect a USB cable between the device and their Bluetooth® (wireless) matched VAS 5054A Transmitter Head. This ensures uninterrupted data transfer.

Use the procedures in the following sections to initially configure a VAS 5054A Transmitter Head for USB (cabled) operation on a VAS diagnostic laptop or tablet with **ODIS Service ONLY**.

This document covers VAS 5054A USB configuration for VAS diagnostic laptop or tablet devices with **Windows® XP** and **Windows 7** operating systems.

ATTENTION!

Attempting to use the USB cable without **first performing the initial USB configuration** may cause the tablet or laptop operating system to “lock up”, which requires a forced, manual restart and loss of the session diagnostic log.

Note:

Please discard any printed copies of this document after use. Revised versions may be issued at any time. Always check ServiceNet for the latest version.

2.0 – Preparation

Prerequisites

- VAS diagnostic laptop or tablet connected to power adapter.
- VAS-PC not installed or previously uninstalled.**
- The latest version of ODIS Service installed and configured.**
- ODIS Service not running during configuration.
- VAS 5054A previously configured for Bluetooth® operation.
- VAS 5054A **disconnected** from vehicle Data Link Connector (DLC)
- VAS diagnostic tester tablets: USB mouse connected for easier navigation.

1. Turn on the diagnostic laptop or tablet.
2. Note the **Windows operating system logo** displayed during startup (**Windows XP** or **Windows 7**).
3. Switch the wireless operation switch to the **OFF** position as applicable:



VAS 6150 & VAS 6150A
(Front panel behind handle)



VAS 6150B & VAS 6150C
(Middle right side behind WIRELESS door)



VAS 6160/A
(Upper left side behind SC/EX door)

3.0 – USB Configuration

3.1 – General Information

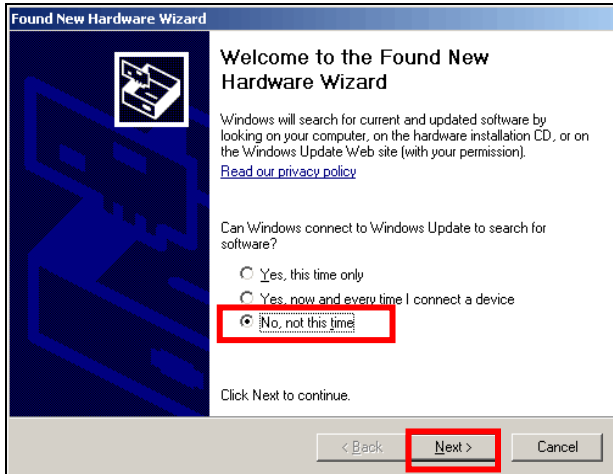
The USB configuration is an initial, one-time procedure that installs the necessary drivers to enable cabled communication with the diagnostic laptop/tablet.

USB configuration procedures differ slightly between Windows XP and Windows 7. Please choose the procedure that applies in your case:

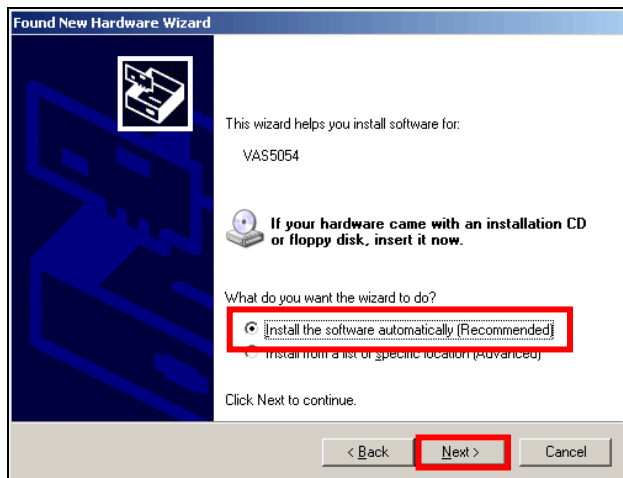
- **Windows XP** – Section 3.2 – [Page 3](#).
- **Windows 7** – Section 3.3 – [Page 4](#).

3.2 – Procedure – Windows XP

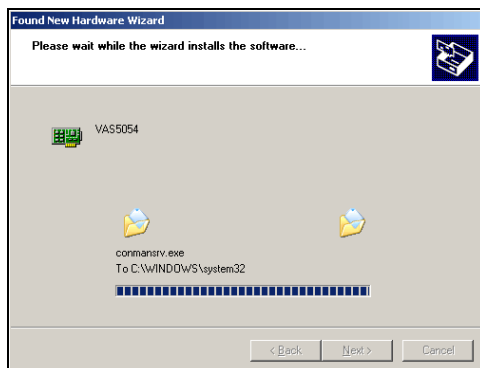
1. Connect the VAS 5054A to a vehicle DLC to establish power supply.
2. Connect the USB cable between the VAS 5054A and a free USB port on the tablet or laptop.
3. When the **Found New Hardware Wizard** starts, select **No, not this time**, then **Next**. If the wizard does **not** start, the USB configuration has already been performed. No further action is necessary.



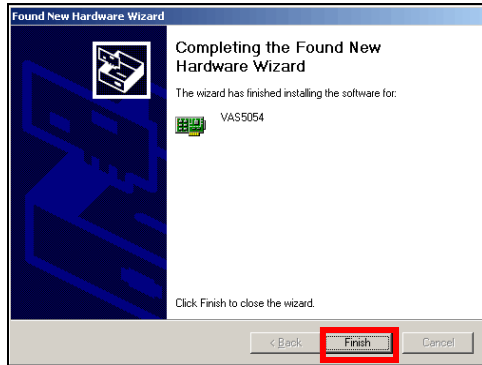
4. Select **Install the software automatically (Recommended)**, then **Next**.



5. Wait while the wizard locates and installs the software:




6. Click **Finish** to complete the installation, and then close the installation window.

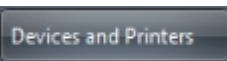


Refer to **Section 4.0** below for additional information.

3.3 – Procedure – Windows 7

1. Connect the VAS 5054A to a vehicle DLC to establish power supply.
2. Connect the USB cable between the VAS 5054A and the USB 2.0 (ruggedized) port on the tablet or laptop.
3. Windows will detect and install the necessary drivers automatically. No user intervention is necessary.
4. From the desktop, click the **Windows** (Start) button: 

5. Select **Devices and Printers**:



6. Verify VAS5054 appears as **Unspecified (1)**:

Note:

VAS5054 appears in **Devices and Printers (Unspecified)** only when connected to a vehicle DLC.



4.0 – USB Function

Before performing SVM or adaptation with ODIS Service in USB (cabled) mode, **always**:

1. Move the wireless switch to the **OFF** position (where applicable).
2. Connect a **network Ethernet cable** to the tablet or laptop. We do not recommend performing SVM or adaptation on a wireless network.
3. Connect the VAS 5054A to the vehicle DLC to establish power supply.
4. Connect USB cable between the VAS 5054A and an applicable USB port on the tablet or laptop.
5. Start ODIS Service and commence with SVM or adaptation.

To resume Bluetooth (wireless) operation after completion of the SVM or adaptation procedure, disconnect the USB cable between the transmitter head and diagnostic device, and move the wireless switch to the **ON** position (where applicable).