

# Service Information

**VAS Tester**

**Number: AVT-14-01**

**Subject: VAS 6160A Diagnostic Tablet - Unpacking and Setup Instructions**

**Date: Jan. 03, 2014**

**Supersedes AVT-13-21 due to additional information.**

## Table of Contents

Section	Page
1.0 Additional Documentation	<a href="#">1</a>
2.0 Safety Instructions	<a href="#">2</a>
3.0 Important Information	<a href="#">4</a>
4.0 Unpacking Instructions	<a href="#">5</a>
5.0 Contents of Carton	<a href="#">6</a>
6.0 Install Rechargeable Battery Pack	<a href="#">6</a>
7.0 Connecting to Power	<a href="#">7</a>
8.0 Initial Start and Windows® Setup	<a href="#">8</a>
9.0 Network Configuration and Netviewer	<a href="#">10</a>
10.0 Install Offboard Diagnostic Information System Service (ODIS Service)	<a href="#">12</a>
11.0 VAS 5054A Transmitter Head Setup	<a href="#">13</a>
12.0 Warranty Registration	<a href="#">14</a>
13.0 Malfunctions and Support	<a href="#">15</a>

## 1.0 – Additional Documentation

These unpacking and setup instructions contain references to **Service Information (SI)** documents with additional instructions needed before placing the tablet into service. These documents are all posted on **ServiceNet**.

Locate and print the following documents to have on hand before proceeding with these instructions. Use the ServiceNet **“Search”** function to obtain the latest versions:

SI Doc. Category	Document Titles
VAS Tester	VAS Diagnostic Device Computer Name Builder
	VAS 5054A Transmitter Head Bluetooth & EDIC Configuration – ODIS Service Only
	VAS 5054A Transmitter Head USB Configuration – ODIS Service Only
ODIS Service	ODIS Service Installation Phase 1 - Preparation and License Request Instructions (eShop)
	ODIS Service Installation Phase 2 - Software Installation & Configuration Instructions
	ODIS Service Installation Phase 3 - Security Certificate Request & Installation Instructions

## 2.0 – Safety Instructions

### 2.1 – Explanation of Symbols

Symbols with the following meanings are used in the safety instructions of the Operating Manuals, the startup/unpacking instructions and other documentation provided, in screen displays on the tester during operation and on the products themselves:



#### **Warning!**

*Text with this symbol contains information regarding your safety and how you can reduce the risk of serious or fatal injuries. The **Warning** symbol deserves special attention with respect to your safety.*



#### **Caution!**

*Text with this symbol contains information on how you can prevent damage to the vehicle and to the device. The **Caution** symbol informs you that failure to comply with such information can result in damage to the vehicle and/or tester, e.g.: ensure touch screen is not touched with sharp objects.*



#### **Note**

*Text with this symbol contains additional, useful information. The **Note** symbol indicates important information on the product, its use and other items.*

### 2.2 – Reference to Additional Safety Instructions

The following contains the general safety instructions that apply to all VAS diagnostic console, tablet and laptop devices. Additional safety instructions can be found in the applicable device Operating Manuals. It is thus important to read the device Operating Manual prior to use. Safety instructions may also appear on the screen of the tester and displayed by the diagnostic software. Heed all instructions displayed.

### 2.3 – Important Safety Instructions



#### **Warning!**

1. Read all instructions.
2. If the power cable or unit is damaged, the equipment may be not used until inspected by a qualified technician.
3. Do not allow any cables or leads to drape over the edges of tables, benches or stands. Prevent hot parts or rotating fans from coming into contact with cables or leads.
4. Use of an extension cable is prohibited. When performing tests, only the specified cables and leads may be used.
5. Always unplug the equipment when it is not in use. Never unplug the power cable from the outlet by pulling on the cable. Grasp the connector to disconnect the equipment from the power outlet.
6. The tester may not be used in the vicinity of open fuel containers, as there is otherwise the risk of fire or explosion.
7. When you are working on internal combustion engines, ensure adequate ventilation. Otherwise, there is a risk of poisoning.

**Continued ...3/**



## **Warning!**

8. Use the equipment only in the manner described. Use only the accessories listed by the manufacturer.
9. Risk of explosion. The equipment has spark-generating components inside and for this reason must not be used in areas with flammable vapors. The equipment should be operated at a height of at least 460 mm (18 inches) above the floor, since gasoline and other possible vapors collect at floor level.
10. The equipment complies with Safety Class 1 when under power and is equipped with a safety tested power cable. Connect the equipment only to electrical service or power outlets with a grounded protective conductor (TN network).
11. Fasten the diagnosis laptop securely to the rear seat of the vehicle during test drives. A second person on the rear seat must operate the diagnosis laptop. For safety reasons, operation on the front seat and without being fastened securely is prohibited (e.g. risk of triggering the airbag).
12. Electric ignition systems have voltages of up to approx. 30 kV. General Safety guidelines for workshops are to be observed at all times.
13. Opening of the tester, including its accessories, by unauthorized personnel can result in serious risk to the individual and the equipment.
14. If the power cable, a diagnostic or measuring cable, the tester or any other accessory under power is damaged, their use is prohibited until a qualified technician has given approval to do so.
15. If you will not be using the equipment for a longer period of time, please switch it off at the on/off switch and disconnect it from the power if the rechargeable battery is charged. Switching off at the on/off switch alone does not ensure that the power supply, charging circuit or any connected accessory has been disconnected from power.
16. Data transmission lines should not be connected or disconnected during a thunderstorm nor should the equipment itself be operated.



## **Warning!**

1. No antenna modifications, e.g. relocation or use of other antennas or transmitters, are permitted on units approved for wireless operation.
2. Do not use a portable transmitter (e.g. wireless network (WLAN) or Bluetooth device) in the vicinity of unshielded detonator caps or in an explosive atmosphere, unless the device has been modified in a way that permits such use.
3. Information regarding Bluetooth and W-LAN approval in various countries may be found in the diagnostic software operating manual.

Continued ...4/



## **Caution!**

1. Line voltage fluctuations and deviations exceeding the permissible tolerance can result in malfunction and damage to the diagnostic device.
2. When operating the VAS 6160A in a workshop cart, ensure that the power adapter has adequate ventilation. Remember that the charging circuit is operating even when the tester is switched off. This is also true in the power saving mode.
3. When connecting other make vehicles:
  - The VAS 6160A diagnostic laptop was developed and specified for vehicles manufactured by the Volkswagen Group. Connecting the tester or remote diagnosis head interface directly to a vehicle from another manufacturer, may cause damage to the vehicle's electrical system.
  - If attempting to use the generally applicable OBD functions for self-diagnosis of other make vehicles, the OBD adapter cable VAS 5052/16 should be connected between the diagnostic head and diagnosis connection in the vehicle.
4. When handling the rechargeable battery:
  - The rechargeable battery should be replaced only by properly trained personnel.
  - Never short-circuit the rechargeable battery.
  - Never throw the rechargeable battery into a fire.
  - Dispose of/recycle the rechargeable battery only when discharged and in accordance with local regulations.

**PLEASE PRINT THIS MANUAL AND KEEP IT IN A SAFE PLACE!**

## **3.0 – Important Information**

### **3.1 – Shipping Damage / Incomplete Shipment**

Please check the following items when unpacking/starting your VAS 6160A:

1. Packaging damaged:
  - Have the damage confirmed in writing on the shipping documents by the delivery service and report it immediately.
2. Packaging in good condition, but contents damaged:
  - Report damage to Snap-on immediately.
3. Incomplete shipment:
  - Please check the contents list as per instructions in **Section 5.0 – Contents of Carton** to determine whether your shipment is complete. Report issues to Snap-on immediately.

Continued ...5/



## 3.2 – Temperature Equalization



### **Caution!**

If the VAS 6160A is delivered during winter months, efforts must be made to prevent the formation of condensation within the device. For this reason we recommend the device be left unattended at room temperature for approximately 3 hours prior to connecting/switching on for temperature compensation purposes.

## 3.3 – Safety and Startup Instructions

Please read the safety and startup instructions carefully prior to startup.

## 3.4 – Purchase Documentation

Please retain your shipping documents as proof of purchase and delivery.

## 3.5 – Additional Instructions



### **Note**

- *These unpacking and setup instructions include cross-references to other **Service Information** documents with additional instructions needed prior to placing the laptop into service. These additional documents are all posted on **ServiceNet**.*
- ***If you have not already done so, be prepared to locate the cross-referenced documents!***
- *Print the documents if necessary and perform the necessary instruction steps **before** continuing with any remaining instructions in this document.*
- *As of the publication date of this document, new VAS 6160A are shipped with **either Windows® XP or Windows 7 operating systems**. Heed the instructions that are applicable to the installed system.*

## 4.0 – Unpacking Instructions

The VAS 6160A is delivered with the tablet unit and docking station (port replicator) packed separately in the main shipping box.

1. Unpack all parts; then remove the protective film from the tablet and the docking station (port replicator).
2. Dispose of the packaging material in accordance with local regulations.
3. Check the contents for completeness as instructed in **Section 5.0 - Contents of Carton**.
4. In case of incomplete shipment, report the issue immediately to Snap-on (SBS).

Continued ...6/



## 5.0 – Contents of Carton

Confirm your VAS 6160A shipment contains the following items (check the boxes provided):

- ☐ 1. VAS 6160A
- ☐ 2. Docking Station with CD/DVD drive
- ☐ 3. A/C Power Adapter/cables
- ☐ 4. VAS 5054A Transmitter Head
- ☐ 5. VAS 5054A USB Cable ("Rugged USB 2.0")
- ☐ 6. Stylus
- ☐ Rechargeable Battery\*
- ☐ Operating Manuals for Panasonic CF-D1 series tablet and docking station\*

\*Not shown



## 6.0 – Install Rechargeable Battery Pack



### Caution!

When handling the rechargeable battery:

- The battery should be replaced only by properly trained personnel.
- Never short-circuit the battery.
- Never throw the battery into a fire.
- Dispose of/recycle the battery only when discharged and in accordance with local regulations.

Remove battery from its packaging and install as follows:

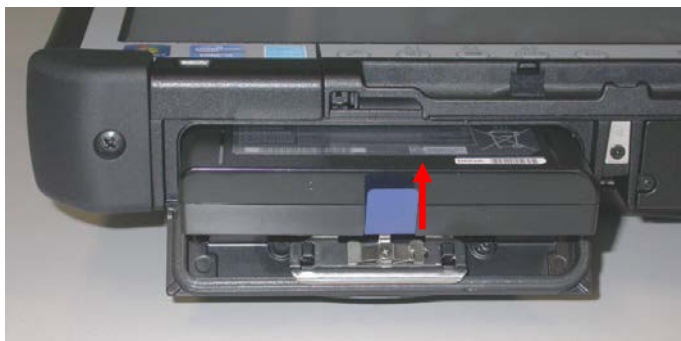
1. On the left-hand underside of the tablet, slide the battery compartment lock to the right and downward as illustrated **-arrows-**, then open the battery compartment cover:







- Slide the battery pack into the compartment until it connects firmly with the contacts **-arrow-:**



- Close battery compartment cover and re-secure the battery compartment cover/lock.



### **Caution!**

Ensure battery compartment cover is locked at all times. Otherwise, the battery pack may fall out during use or transport.



### **Note**

*For optimum battery performance and service life, please heed the battery charging and recalibration instruction documents included with the Panasonic program suite. After 6160A set up, locate the documents as follows:*

- From the Windows desktop, go to **Start > Programs (All Programs) > Panasonic > Battery**
- Select **Battery Recalibration** or **Important Tips**

## **7.0 – Connecting to Power**

The tablet is connected to power either via the docking station (port replicator) connection to the A/C power adapter, directly via the A/C power adapter or run from the internal rechargeable battery pack.



### **Caution!**

- The A/C power adapter includes a country-specific power cable (UL-approved or CSA-approved, oil-resistant power cord).
- Operation on ungrounded or impedance-grounded electrical networks (IT electrical networks) is prohibited.
- Use only the original Panasonic CF-D1 power adapter. For additional information (part number etc.), refer to the CF-D1 Operating Manual.

## 8.0 – Initial Start and Windows® Setup

### 8.1 – Preparation

Initial startup must be performed with the **tablet removed from the docking station (port replicator)** and the **wireless switch** in the **OFF** position. Additional information can be found in the Panasonic CF-D1 Operating Manual.

1. On the upper left-hand side of the tablet, open the access cover marked “SC / EX”. If necessary, slide the wireless operation switch to the **OFF** position **-arrow-**:



2. Connect the A/C power adapter cable to a 115V A/C outlet and the **DC IN 15.6V** port **-arrow-** on the lower right-hand side of the tablet:



### 8.2 – Interface Connections

For additional information on interface connections, refer to the Panasonic CF-D1 and docking station (port replicator) Operating Manuals.

### 8.3 – Switching the Unit On and Off

Switch on the tablet by pressing the on/off button on the front of the tablet for approximately 1 second. The tablet boots up and the Windows user interface appears.



#### **Caution!**

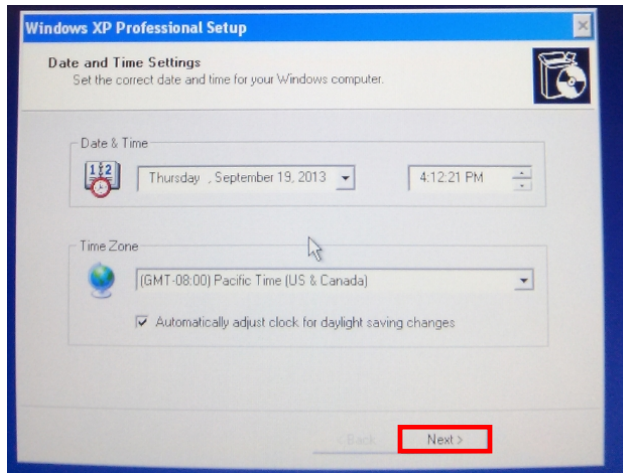
- When switching the tablet off after normal use, **DO NOT press and hold the on/off button for longer than 5 seconds!** This executes a forced shutdown which may result in hard drive faults.
- To switch off the tablet after normal use, click the Windows “**Start**” symbol from the desktop and then select **“Turn Off Computer” and “Turn Off” (Windows XP) or “Shut down” (Windows 7).**



## 8.4 – Windows - Initial Setup

After the initial Windows setup screens are displayed...

1. Set the **Date**, local **Time**, **Time Zone** and **Daylight Savings** settings as applicable to your location and click **Next**: (Windows XP setup screen illustrated below. Windows 7 setup screen is similar).



The system saves the settings and then automatically reboots to the Windows desktop.  
All settings performed here can be changed at any time through Windows **Control Panel**.

## 8.5 – Delete Non-Applicable Documentation



### Note

*The Windows desktop on new devices may include two documents containing information that is not applicable to the -US/CDN- market. **If present, please delete these documents as instructed below.***

1. From the Windows desktop, locate two **Adobe Acrobat** document icons entitled:  
**HowTo Guide\_ODIS Service Set-Up\_EN** and **HowTo Guide\_ODIS Service Set-Up\_DE**:



2. **Right click** each icon and select **Delete** from the dropdown.
3. When prompted to confirm file delete, click **Yes**.

Continued ...10/

## 8.6 – Docking Station (port replicator) Connection

The connector array for the docking station on new VAS 6150A tablets is covered to prevent damage during shipping and initial handling. Prior to parking the tablet in the docking station for the first time, slide protective cover **-1-** upwards **-arrow-** to expose the connector array:



### **Caution!**

Whenever the tablet is separated from the base station (port replicator) for extended periods, we recommend closing the connector array cover to prevent damage.

## 9.0 – Network Configuration & Netviewer

### 9.1 – Set Computer Name



### **Notes**

- If more than one VAS diagnostic console, tablet or laptop device be connected to the dealership network, each device **must use a different computer name**.
- While various computer naming methods may be used, each must ensure that the computer names for all individual devices on a network are different.
- The computer name must be determined and set **before** using any vehicle diagnostic software functions that utilize the dealership LAN connection to the Internet.

We recommend the computer name be set **before** proceeding with the remaining setup.

For a **suggested** method to build, set and validate computer names, refer to **Service Information – VAS Tester** document title: **VAS Diagnostic Device Computer Name Builder**

## 9.2 – Configure Static IP Addresses

This section applies **ONLY** to VAS diagnostic devices used in dealership networks using **static IP addresses** (the tablet is set to DHCP by default).

If your dealership network is configured using DHCP, proceed to **Section 9.3 - Download and Install Netviewer Software - [Page 12.](#)**

If you are unfamiliar with the process we recommend you ask your dealership systems administrator or IT professional for assistance, or **call the Audi of America IT Service Desk at: 866-892-3375.**

### 9.2.1 – Static IP Configuration – Windows XP

1. From the Windows desktop, click **Start > Control Panel > Network Connections**.
2. From the Network Connections dialog, right click (select) **Local Area Connection** and open its **Properties** dialog box.
3. Click on **Internet Protocol (TCP/IP)**.
4. In the **General** tab, check “**Use the following IP addresses**” to open the IP data window.
5. Fill in all IP and DNS address fields as appropriate to your dealership. Ask your dealership systems administrator or IT professional for assistance with this step if you do not know the necessary entries.
6. Select **OK** and close all dialog boxes, and **Restart** the tablet (**Start > Turn Off Computer > Restart**).
7. Connect a dealership network Ethernet cable to the tablet and confirm internet connectivity, i.e.: launch Internet Explorer.

### 9.2.2 – Static IP Configuration – Windows 7

1. From the Windows desktop, click **Start > Control Panel > Network and Internet > Network and Sharing Center**.
2. Click **Change Adapter Settings**.
3. Right click **Local Area Connection** and choose **Properties**.
4. Click **Internet Protocol Version 4 (TCP/IPv4)**
5. Place a dot in **Use the following IP Address** and **Use the following DNS server addresses**.
6. Fill in all IP and DNS address fields as appropriate to your dealership. If you do not know the necessary entries, ask your dealership systems administrator or IT professional for assistance.
7. Select **OK** and close all dialog boxes, and **Restart** the tablet (**Start > Turn Off Computer > Restart**).
8. Connect a dealership network Ethernet cable to the tablet and confirm internet connectivity, i.e.: launch Internet Explorer.

Continued ...12/

## 9.3 – Download and Install Netviewer Software



### Note

*Netviewer telediagnosis software enables Audi of America support personnel to access your device remotely during support call consultation. When necessary, consultants will instruct you to start the Netviewer application, and they will provide a session number to start a remote diagnosis*

An active internet connection must be available before continuing, i.e.: static IP configuration performed as instructed in **Section 9.2** or DHCP connection confirmed.

1. From the Windows desktop, launch Microsoft **Internet Explorer**.
2. Logon to **ServiceNet**.
3. From the **Workshop Equipment** section, select **VAS Tester > Software**.
4. **Right click** the link to the **Netviewer one2one – Telediagnosis Software**.
5. Select **Save Target As...** from the menu and save file to the Windows desktop.
6. When the save is complete select “**Close**” from the dialog box and close all remaining windows.

## 9.4 – Additional Information

Before proceeding to use the VAS 6160A, please read the "**Panasonic CF-D1 Series Operating Manual**", containing additional important information regarding the unit, its accessories and its care.

## 10.0 – Install Offboard Diagnostic Information System Service (ODIS Service)

### 10.1 – General Information

Dealerships are responsible for requesting an ODIS Service license, and then installing and configuring the latest “installation version” of ODIS Service available.

A security certificate to enable vehicle Software Version Management (SVM) and module adaptations must also be requested and installed.

For detailed instructions, refer to **Service Information - ODIS Service** document titles (in order of use):

- **ODIS Service Installation Phase 1 - Preparation and License Request Instructions (eShop)**
- **ODIS Service Installation Phase 2 - Software Installation & Configuration Instructions**
- **ODIS Service Installation Phase 3 - Security Certificate Request & Installation Instructions**



### Note

**Before proceeding to Section 11.0**, prepare the laptop, request the license, install and configure the latest version of ODIS Service etc. **in phase order, exactly as instructed in the three Service Information document titles specified above!**

Continued ...13/

## 11.0 – VAS 5054A Transmitter Head Setup

### 11.1 – General information

The VAS 6160A is equipped with a Bluetooth® (wireless) interface for operation of the supplied VAS 5054A Transmitter Head:



The VAS 5054A is powered by the vehicle Data Link Connector (DLC) when connected, and communicates with the tablet and the diagnostic software via Bluetooth (wireless) mode or supplied USB cable via USB mode.

### 11.2 – Bluetooth & EDIC Configuration

Bluetooth (wireless) operation is possible only with the tablet wireless operation switch in the **ON** position.

Visible confirmation of wireless operation is via the wireless operation indicator on the LED array on the front lower panel adjacent to the tablet On-Off switch **-arrow-**:



**Prior to first use of the VAS 5054A and ODIS Service in Bluetooth (wireless) mode**, the VAS 5054A must be configured to the Bluetooth and EDIC software on the tablet.

ODIS Service must be installed **before** Bluetooth and EDIC software configuration. For detailed instructions refer to **Service Information - VAS Tester** document title: **VAS 5054A Transmitter Head – Bluetooth & EDIC Configuration – ODIS Service Only**.

Continued ...14/





## 11.3 – VAS 5054A USB (cabled) Operation

If the tablet is used to perform **Software Version Management (SVM)** flash procedures or **ant-theft immobilizer adaptations**, a USB (cabled) connection must be used between the VAS 5054A transmitter head and the tablet. This ensures an uninterrupted data stream.

**Prior to first use with a USB cable**, the tablet and transmitter head must be configured for USB (cabled) operation. For instructions refer to **Service Information – VAS Tester** document title: **VAS 5054A Transmitter Head - USB Configuration & Function – ODIS Service Only**



### Notes

- For USB (cabled) connection of VAS 6160A to VAS 5054A, the supplied USB cable is of the **Rugged USB 2.0** type. A circular, secure (locked) connection is used.
- On the lower right-hand side of the tablet, open the cover for the Rugged USB 2.0 port and connect by lining up the two dots and inserting the connection straight into the port **-arrow 1-**:
- To disconnect, release the connector lock **-A-** by sliding the locking collar away from the tablet **-arrow 2-**:



## 12.0 – Warranty Registration

A formal warranty registration process for new tablet for warranty coverage is no longer necessary.

The device serial number was automatically registered with the US/CDN market service provider for warrantable repairs at the time of purchase.

In case of warranty repair requests, please provide the serial number of the device to the **Audi of America DTSS consultant** at the toll-free number listed in **Section 13.0 – Page 15**.

Continued ...15/





## 13.0 – Malfunctions and Support

All VAS 6160A are tested before leaving the factory. Selected components and numerous quality control inspections ensure high reliability of your new diagnostic tablet.

Should performance or functional issues occur after placing the device into service, please attempt to identify and localize as accurately as possible. Try to determine if the symptom is a result of the Panasonic CF-D1 tablet **hardware**, Windows **operating system**, ODIS Service **software** or dealership **network** (for internet connectivity). Then proceed as follows:

- **For tablet hardware and operating system issues**, consult the information in the "Troubleshooting" chapter in the Panasonic CF-D1 Operating Manual.

Also review the latest **VAS Tester FAQs** and **Service Information** document topics in the **Workshop Equipment – VAS Tester** section of **ServiceNet**. The issue may be previously known and a resolution already published.

- **For ODIS Service software functional issues**, review the latest **ODIS Service FAQs** and **Service Information** document topics in the **Workshop Equipment – ODIS Service** section of **ServiceNet**. The issue may be previously known and a resolution already published.
- If it is not possible to resolve the issue with the aid of the Panasonic CF-D1 Operating Manual or ServiceNet documents, contact:

**Audi of America DTSS: 1-888-896-1298.**